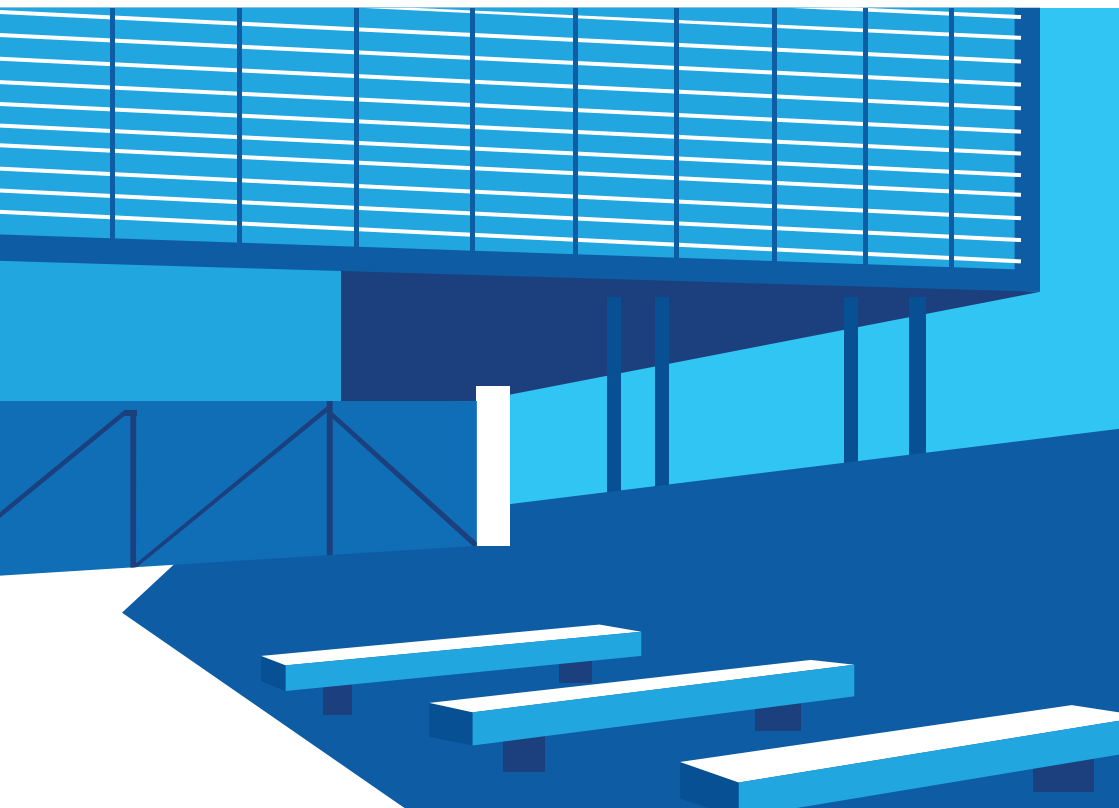


Ninth International Conference on  
**The Constructed Environment**

*Traces “in-Motion”: How People and Matter  
Transform Place*



**23–24 May 2019**  
Centro Cultural Vila Flor  
Guimarães, Portugal



CÂMARA  
MUNICIPAL DE  
GUIMARÃES



COMMON GROUND



The Constructed Environment

Ninth International Conference on  
**The Constructed Environment**

*“Traces ‘in-Motion’: How People and Matter Transform Place”*

23–24 May 2019 | Centro Cultural Vila Flor | Guimarães, Portugal



[www.ConstructedEnvironment.com](http://www.ConstructedEnvironment.com)

[www.facebook.com/ConstructedEnvironment](https://www.facebook.com/ConstructedEnvironment)

@theconstructed | #ICTCE19



CÂMARA  
MUNICIPAL DE  
**GUIMARÃES**



CENTRO CULTURAL VILA FLOR  
GUIMARÃES



COMMON GROUND

**Ninth International Conference on The Constructed Environment**  
[www.constructedenvironment.com](http://www.constructedenvironment.com)

First published in 2019 in Champaign, Illinois, USA  
by Common Ground Research Networks, NFP  
[www.cgnetworks.org](http://www.cgnetworks.org)

© 2019 Common Ground Research Networks

All rights reserved. Apart from fair dealing for the purpose of study, research, criticism, or review as permitted under the applicable copyright legislation, no part of this work may be reproduced by any process without written permission from the publisher. For permissions and other inquiries, please contact [support@cgnetworks.org](mailto:support@cgnetworks.org).

Common Ground Research Networks may at times take pictures of plenary sessions, presentation rooms, and conference activities which may be used on Common Ground's various social media sites or websites. By attending this conference, you consent and hereby grant permission to Common Ground to use pictures which may contain your appearance at this event.

Designed by Ebony Jackson and Brittani Musgrove



Welcome Letter .....	1
About Common Ground .....	3
The Constructed Environment Research Network	
About The Constructed Environment Research Network .....	7
Themes .....	8
2019 Special Focus .....	10
Scope and Concerns.....	11
The International Advisory Board .....	12
Scholar .....	13
The Constructed Environment Journal	
About the Journal .....	17
Article Submission Process and Timeline.....	18
Common Ground Open.....	20
International Award for Excellence .....	21
Subscriptions and Access .....	22
The Constructed Environment Book Imprint	
About the Book Imprint.....	25
Previously Published Books .....	27
The Constructed Environment Conference	
About The Constructed Environment Conference .....	31
Ways of Speaking .....	34
Daily Schedule .....	36
Conference Highlights.....	37
Plenary Speakers.....	39
Emerging Scholars.....	41
Schedule of Sessions .....	42
List of Participants.....	75
Notes.....	77
Conference Calendar .....	85



Friday, 24 May

09:15-10:30

PARALLEL SESSIONS

Room 2

Cultural Considerations

**Impact on Cultural Significance: A Values-Based Approach to Architectural Heritage Conservation**

Sofia Aleixo, Assistant Professor, Victor Mestre | Sofia Aleixo Arquitectos lda, Lisboa, Portugal  
The presence of the term ‘cultural significance’ in heritage conservation guidelines issued by ICOMOS, UNESCO and more recently the Council of Europe (CoE) has shifted the origin of evaluation of historic environments from experts to users. The social impact of architectural conservation is, therefore, a topic in need of research, so that cultural heritage values can be enhanced and not mitigated by inattentive interventions. In this presentation the values of a specific building typology of our common cultural heritage will be discussed, and a methodology developed to evaluate the impact of architectural conservation practices will be presented, using historic schools in Portugal as case studies. The presentation will conclude on the value of the use of research and evaluation methods in the built environment stakeholders when addressing the case of architectural conservation of historic schools.

*Social Impacts*

**The Power of Place: How the National Museum of African American History and Culture’s Interactive Place Table Highlights the Social Impacts of African American Built Environments**

Lindsey Bestebreurtje, Curatorial Assistant, Office of Curatorial Affairs, Smithsonian Institution - NMAAHC, United States

The Smithsonian Institution’s National Museum of African American History and Culture (NMAAHC) opened its doors in September of 2016. One of its inaugural exhibitions is the “Power of Place.” This exhibition uses ten case studies of places in the U.S. illustrating the distinct flavor and experience of each - including the Bronx, Oak Bluffs in Martha’s Vineyard Massachusetts, Tulsa, Oklahoma, and Greenville, Mississippi. These place studies contain a mix of diverse stories—well-known and unknown; mainstream and edgy; celebratory and challenging. At the center of this exhibition the idea of place and region as a crucial component of the African American experience is explored through an interactive multimedia area called the “Place Table.” This table shows professional and personal photographs dating back more than a century. Behind each photo is a story that describes African American life in every pocket of the country. The stories reflect on themes of home, migration, community, displacement, neighborhood, travel, and loss. The table seeks to highlight regional African American culture, and also recognizes the ways in which place is tied to displacement for the community – those places that were lost. In this paper, I explore the development of the table, how stories and images were chosen to highlight the personal and social impacts of physical spaces, and the struggles of both finding stories from lost environments and crowd-sourcing new entries within the black community.

*Social Impacts*





Julia Abreu da Costa Pereira	Faculty of Architecture and Urbanism (FAU), Federal University of Rio de Janeiro	Brazil
Sofia Aleixo	Victor Mestre Sofia Aleixo Arquitectos lda	Portugal
Karen Andersen Cirera	Universidad Austral de Chile	Chile
Barry Ballinger	University of Kansas	United States
Lindsey Bestebreurtje	Smithsonian Institution - NMAAHC	United States
Katia da Costa Bezerra	University of Arizona	United States
Joao Brandao		Portugal
Sandra Brito	Fundação para a Ciência e a Tecnologia	Portugal
Andrew Brody	Endicott College	United States
Lawrence Brydon	Sustainable Buildings Canada	Canada
Waldo Bustamante	Pontificia Universidad Catolica de Chile	Chile
João Cabeleira	University of Minho	Portugal
Vincent Canizaro	University of Texas at San Antonio	United States
Jonathan Cha	Université du Québec à Montréal	Canada
Myoung Joo Chun	Endicott College	United States
Malcolm Compitello	University of Arizona	United States
René Davids	University of California, Berkeley	United States
Daniel Duarte Pereira	Space Transcribers	Portugal
Eduardo Fernandes	University of Minho and Lab 2 PT	Portugal
Fernando Ferreira	Space Transcribers	Portugal
Cidália Ferreira Silva	University of Minho	Portugal
Sophie Fitz Maurice	University of California, Berkeley	United States
André Fontes	Cerejeira Fontes Architects	Portugal
Reza Foroughi	Appalachian State University	United States
Murat Germen	Sabanci University	United States
Peter P. Goché	Iowa State University	United States
Ana Catarina Gonçalves Lopes	Univeristy of Minho	Portugal
Rolando Gonzalez	Southern Illinois University	United States
Inês Graça	Lab2PT, Universidade do Minho	Portugal
Sfaksi Imene	Lacomofa Laboratory	Algeria
Phillip Kalantzis-Cope	Common Ground Research Networks	United States
Filiz Klassen	Ryerson University	Canada
Doris Kowaltowski	University of Campinas	Brazil
Joseph Lam	The Hong Kong Polytechnic University	Hong Kong
Vaidehi Lavand	DYP College of Architecture	India
Juliana Maantay	City University of New York	United States
Paula Martins	University of Minho	Portugal
Aniruddha Mitra	Georgia Southern University	United States
Tracy Walker Moir-McClean	University of Tennessee at Knoxville	United States
Maria Da Graça Moreira	University of Lisbon	Portugal
Peter Mulvihill	York University	Canada
Fabian Neuhaus	University of Calgary	United Kingdom
John Emmanuel Ogbeba	Eastern Mediterranean University	Cyprus
Hans Ottow	Waipa Developments	New Zealand
Tatiana Portnova	Common Ground Research Networks	Spain





Jeffrey Poss	University of Illinois at Urbana-Champaign	United States
Simon Rabyნიუკ	University of Toronto	Canada
Roberto Rengel	University of Wisconsin-Madison	United States
Juan Jose Reyna Monrreal	UDEM	Mexico
Gonçalo Rodrigues	University of Minho	Portugal
Eugenia Sanchez Ramos	Universidad de Guanajuato	Mexico
Tiago Mota Saraiva	ateliermob	Portugal
Anne Scheer	Southern Illinois University School of Medicine	United States
Michael Singleton	Sustainable Buildings Canada	Canada
John Smallwood	Nelson Mandela University	South Africa
William Thompson	University of Westminster	United States
Evandra Victorio	University of Campinas	Brazil
Nicholas Virzi	Stanford University	United States
Sarah Wigglesworth	Sarah Wigglesworth Architects	United Kingdom
Fang Xu	Art & Design University of New South Wales	Australia

Tenth International Conference on  
**The Constructed Environment**

University of California Berkeley  
Clark Kerr Campus  
Berkeley, USA  
**13–14 May 2020**

**Call for Papers**

We invite proposals for paper presentations, workshops/interactive sessions, posters/exhibits, colloquia, innovation showcases, virtual posters, or virtual lightning talks.

**Returning Member Registration**

We are pleased to offer a Returning Member Registration Discount to delegates who have attended The Constructed Environment in the past. Returning research network members receive a discount off the full conference registration rate.

[constructedenvironment.com/2020-conference](https://constructedenvironment.com/2020-conference)  
[constructedenvironment.com/2020-conference/call-for-papers](https://constructedenvironment.com/2020-conference/call-for-papers)  
[constructedenvironment.com/2020-conference/registration](https://constructedenvironment.com/2020-conference/registration)

