



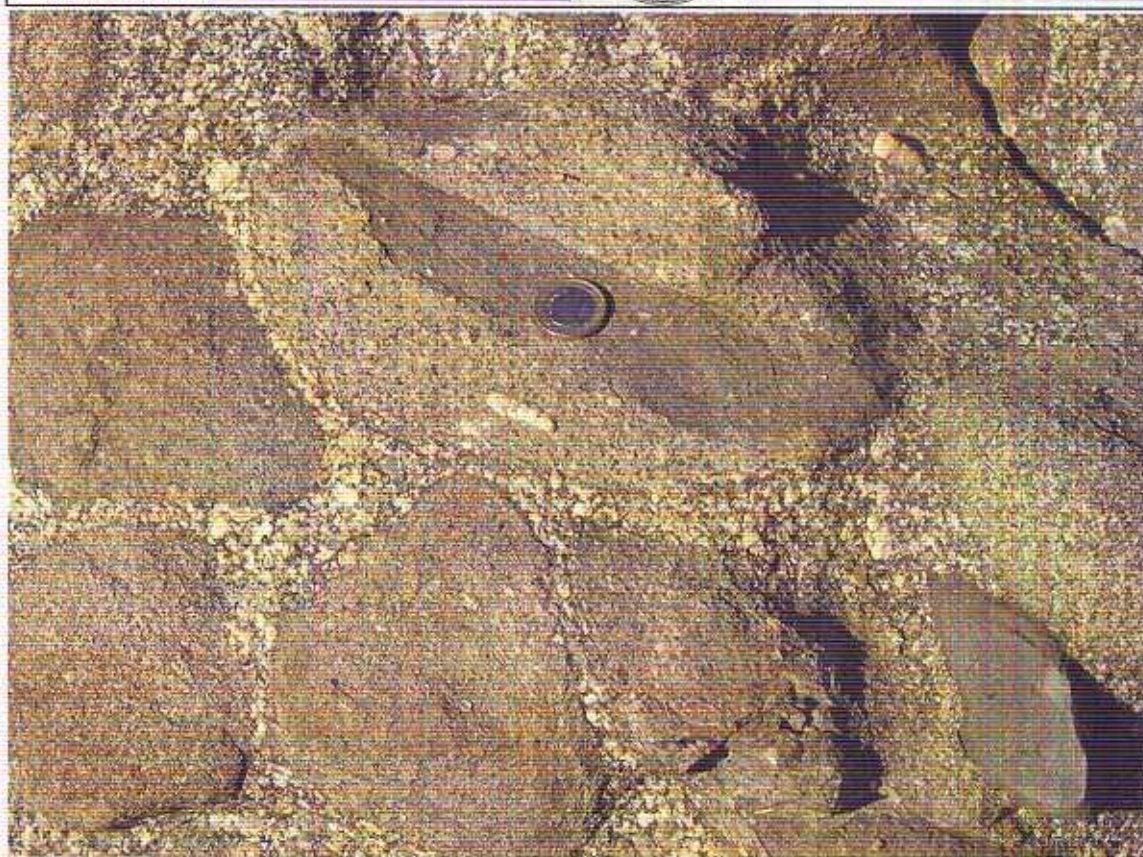
UNIVERSIDAD  
DE SALAMANCA

ESCUELA  
POLITÉCNICA  
SUPERIOR  
DE AVILA



Universidad de Granada

Departamento de Mineralogía y  
Petrología



## **Seventh Hutton Symposium on Granites and Related Rocks**

*Avila, Spain, July 4-9 2011*

### ***Abstracts Book with Attendees Addresses***

*edited by:*

*J. F. Molina*

*J. H. Scarrow*

*F. Bea*

*P. Montero*



Rodríguez, J., Vegas, N., Paquette, J.L., Siebel, W., Basei, M., Gil Ibarra, J.I., Tubía, J.M. Synchronous Variscan magmatic events in NW Iberian Massif, Spain: age constraints for tectonic models .....	125
Roni, E., Rocchi, S., Dini, A., Stevenson, C. Magma flow in a shallow-level mafic laccolith (Orciatico lamproite, Italy): preliminary results from fabric analyses .....	126
Roni, E., Rocchi, S., Dini, A., Westerman, D.S., Stevenson, C. Internal structures of San Martino laccolith (Elba Island, Italy) revealed by fabric analyses: constraints on magma feeding and growth .....	127
Saito, S. Various granitoid plutons in an ongoing arc-arc collision zone, the Izu collision zone, central Japan: implications for transformation from juvenile arc crust to continental crust .....	128
Sánchez-García, T., Pereira, M.F., Bellido Mulas, F., Chichorro, M., Silva, J.B., Valverde-Vaquero, P., Pin, C., Solá, A.R. New geochemical and geochronological data of early Cambrian of SW Iberia: Calc-alkaline magmatism in the transition from active to passive continental margin in North Gondwana .....	129
Sant'Ovaia, H., Martins, H., Noronha, F. Anisotropy of Magnetic Susceptibility in Portuguese Variscan granites .....	130
Sant'Ovaia, H., Nogueira, P., Carrilho Lopes, J., Fonseca, A., Sardinha, R., Lopes, L., Martins, H., Noronha, F. Petrophysical characterization of the late-Variscan Santa Eulália Plutonic Complex (Ossa Morena Zone) .....	131
Sawyer, E.W., Duchesne, L. <b>The extraction of melt in migmatites: information from leucosomes in diatexite and metatexite migmatites from the aureole of the Duluth Igneous Complex (keynote)</b> .....	132
Scarow, J.H., Cambeses, A., Díaz, A., Moreno, J.A., Bea, F. Multi-stage 'calc-alkaline' Variscan plutonism: Valencia del Ventoso, Ossa Morena Zone, Spain .....	133
Scarow, J.H., Pease, V., Whitehouse, M.J., Montero, P., Molina, J.F., Moreno, J.A., Cambeses, A., Bea, F. Producing new crust whilst reworking old: high-precision SIMS zircon oxygen isotope evidence for contrasting styles of magma interaction in Variscan Central Iberian mafic-intermediate stocks .....	134
Shekari, S., Sadeghian, M., Shehri, M., Gavanji, N. Petrology, geochemistry and magnetim of Darreh Bagh granitoidic pluton (SW Iran) .....	135
Shelnuot, J.G., Wang, K.L., Zellmer, G.F., Iizuka, Y., Jahn, B.M., Pang, K.N., Qi, L., Zhou, M.F. A triumvirate of Fe-Ti oxide ore-bearing gabbro-granitoid complexes in the Panxi Region of the Permian Emeishan Large Igneous Province, SW China .....	136
Solá, A.R., Ribeiro, M.L., Neiva, A.M.R. Granitic magmatism along the Central Iberian/Ossa Morena Zone boundary (SW Iberia): geochronology, composition, and geodynamic significance .....	136
Stevens, G., Clemens, J., Farina, F., Villaros, A., Buick, I. <b>Entrained peritectic assemblage: DNA for granitic magmas (keynote)</b> .....	138
Tadmat-Bouzequella, S., Liégeois, J.P., Bruguier, O., Ouabadi, A. The Pan-African Arasel batholith, witness of the beginning of the metacratonization of LATEA (Hoggar, Algeria) .....	139
Tani, K., Dunkley, D.J., Chang, Q., Hirahara, Y., Shukuno, H., Tatsumi, Y. Granite knoll: The first direct evidence for the formation of continental-like granodiorite crust in an intra-oceanic arc .....	140



Saito, S., Arima, M., Nakajima, T., and K. Tani., under revision. Petrogenesis of the Kaikomagatake granitoid pluton in the Izu Collision Zone, central Japan: Evidence for contribution of the K-rich Izu-Bonin rear-arc crust to the source region. Submitted to Contributions to Mineralogy and Petrology.

## **New geochemical and geochronological data of early Cambrian of SW Iberia: Calc-alkaline magmatism in the transition from active to passive continental margin in North Gondwana**

*Sánchez-García, T.<sup>1</sup>, Pereira, M.F.<sup>2</sup>, Bellido Mulas, F.<sup>1</sup>, Chichorro, M.<sup>3</sup>, Silva, J.B.<sup>4</sup>, Valverde-Vaquero, P.<sup>1</sup>, Pin, C.<sup>5</sup>, Solá, A.R.<sup>6</sup>*

*1: IGME, Spain; 2: Universidade de Évora, Portugal; 3: Universidade Nova de Lisboa, Portugal; 4: Universidade de Lisboa; 5: Université Blaise Pascal, France; 6: LNEG-University of Coimbra, Portugal*

The Ossa-Morena Zone (SW Iberia) displays a well-preserved record of the history of the northern Gondwana margin in Late Ediacaran-Early Cambrian times. This period of time is marked by the late-stage evolution of the Cadomian magmatic arc and related back-arc basins (c. 590-545 Ma), and the onset of rifting and widespread magmatism (c. 530-500 Ma) that led to the opening of the Rheic Ocean. Here we present new geochemical and geochronological data on some Cambrian granitoids of Ossa-Morena Zone (Barreiros, Barquete, Salvatierra de los Barros, Calera and Tablada bodies) hosted by Serie Negra, a late Ediacaran Succession made of metagreywackes, metapelites, black metacherts and metabasites. The Cambrian granitoids have compositions that vary between quartz-diorite/tonalite to granites, depending on the proportion of restitic material entrained from their source or their crystal fractionation grade. They show low REE contents with slightly higher degree of fractionation showing LREE ( $(La/Sm)_N=2.15$  and HREE ( $(La/Sm)_N=1.05$ ), and have negative Eu-anomalies (average  $Eu/Eu^*=0.40$ ). They also exhibit negative Nb, Sr and Ti anomalies and average  $Nb/Th=1.98$ ,  $Nb/Y=0.6$ ,  $Zr/Th=13.64$  ratios that are close to those found in the Bulk Continental Crust. Sm-Nd data display moderate negative  $\epsilon_{Nd}$  values, ranging from -3.5 to +0.04. The corresponding  $T_{DM}$  ages range from 1.30 to 2.57 Ga. The older model ages are suspect, because they correspond to samples with high  $^{147}Sm/^{144}Nd$  ratios (0.16-0.18), interpreted to reflect late-stage fractionation of the Sm/Nd ratio, due to separation of a LREE-enriched mineral such as monazite. These ancient model ages and Th/Nb ratios close to upper continental crust values document a significant crustal component. These new whole rock data document the calc-alkaline composition of the Barreiros, Salvatierra de los Barros, Tablada and Calera granites and point to older continental crust materials as predominant contributor to the source of parental magmas. These granites are interpreted as the result of the evolution of mainly crustal magmas dominated by feldspar fractionation in the magma, in an early Cambrian rift-related event (Sanchez-Garcia et al., 2010). Their calc-alkaline signature of these granites is interpreted as result of inheritance of crustal materials derived of subduction-related igneous rocks from the Cadomian arc. New ID-TIMS U-Pb geochronology zircon data yielded an early Cambrian age (c. 524 Ma, U-Pb zircon CA-ID-TIMS dating) for the Barreiros granite. The age obtained reinforces the idea of the relevance of calc-alkaline magmatism associated with rifting in the early Cambrian recently demonstrated by SHRIMP U-Pb geochronology data obtained for the Barquete granite (c.526 Ma; Pereira et al., 2011).