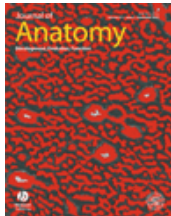


# Journal of Anatomy





## Journal of Anatomy

Volume 211 Issue 5, Pages 681 - 685

Published Online: 7 Sep 2007

Journal compilation © 2008 Anatomical Society of Great Britain and Ireland

-  [Get Sample Copy](#)
-  [Recommend to Your Librarian](#)
-  [Save journal to My Profile](#)
-  [Set E-Mail Alert](#)
-  [Email this page](#)
-  [Print this page](#)
-  [RSS web feed \(What is RSS?\)](#)

Published on behalf of the  
Anatomical Society of Great  
Britain and Ireland



[Go to Society Site](#)

 [Save Article to My Profile](#)  [Download Citation](#)

[< Previous Abstract](#) | [Next Abstract >](#)

**Abstract** | [References](#) | Full Text: [HTML](#), [PDF](#) (Size: 162K) | [Related Articles](#) | [Citation Tracking](#)

### BRIEF COMMUNICATION

## Klippel-Feil syndrome with other associated anomalies in a medieval Portuguese skeleton (13th–15th century)

Teresa Fernandes and Catarina Costa  
Laboratório de Antropologia Biológica, Departamento de Biologia, Universidade de Évora, Portugal

Correspondence: Dr Catarina Costa, Laboratório de Antropologia Biológica, Departamento de Biologia, Universidade de Évora, Apartado 94, 7002-554 Évora, Portugal. T: +351966615694; F: +351266760914; E: [catcosta@uevora.pt](mailto:catcosta@uevora.pt)

### KEYWORDS

butterfly vertebra • hemivertebrae • Klippel-Feil syndrome • medieval Portuguese skeleton

### Abstract



Klippel-Feil syndrome, or synostosis of the cervical spine, is the result of an abnormal division of somites during embryonic development. This report analyses an adult male (exhumed from a Portuguese graveyard dating from the 13th to the 15th century) with malformations in the cranium and vertebral column. Besides the lesions that are typical of Klippel-Feil syndrome type II, other defects usually linked to this pathology are described (occipito-atlantal fusion, hemivertebrae, butterfly vertebrae, cervical rib, changes in normal number of vertebral segments and a possible Sprengel deformity).

Accepted for publication 8 August 2007

### DIGITAL OBJECT IDENTIFIER (DOI)

10.1111/j.1469-7580.2007.00809.x [About DOI](#)

### Related Articles

- Find other [articles](#) like this in Wiley InterScience
- Find articles in Wiley InterScience written by any of the [authors](#)

Wiley InterScience is a member of CrossRef.



[Request Reprint](#)

