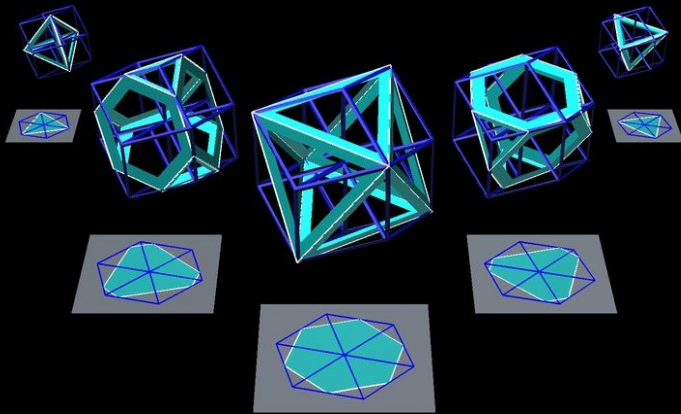
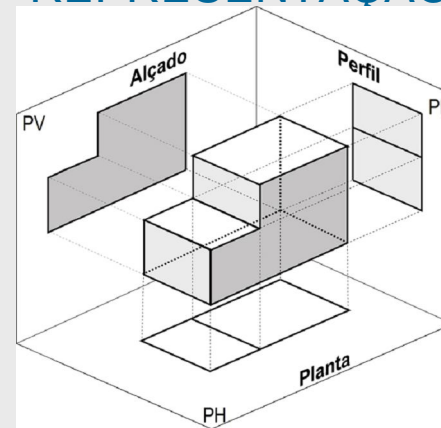


# REPRESENTAÇÃO



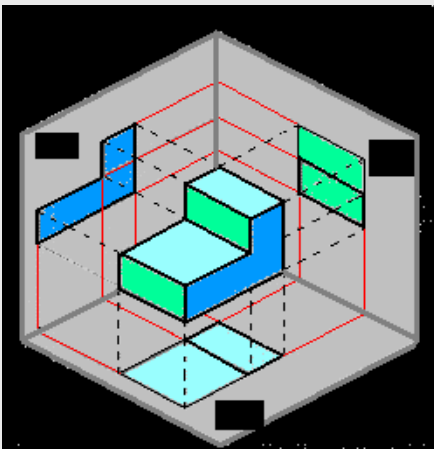
Maria do Céu Simões Tereno - 2011/12

# REPRESENTAÇÃO

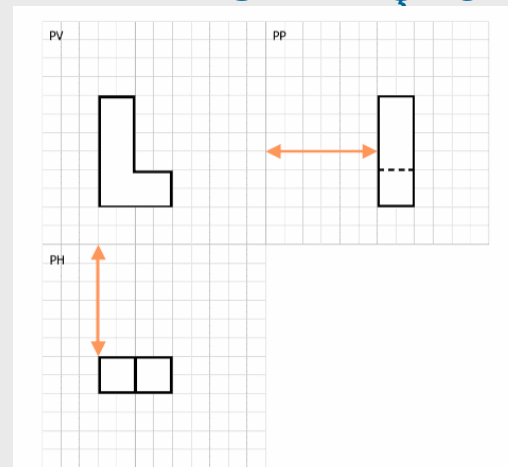


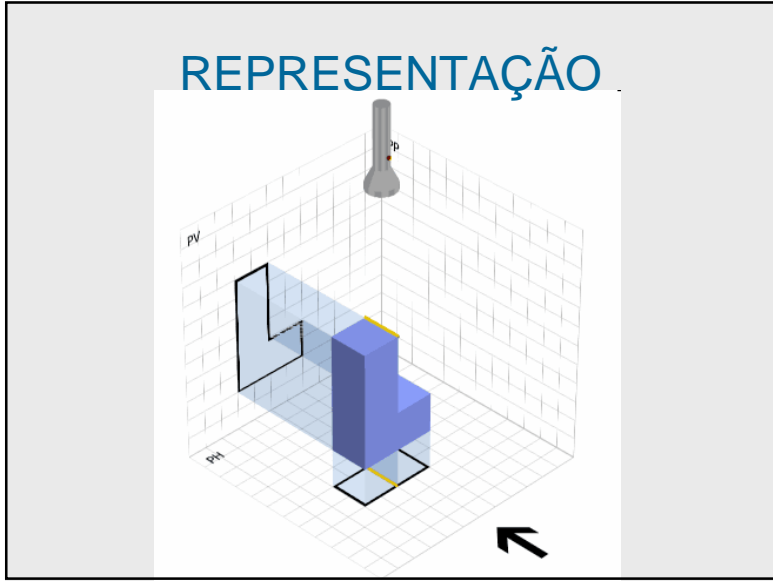
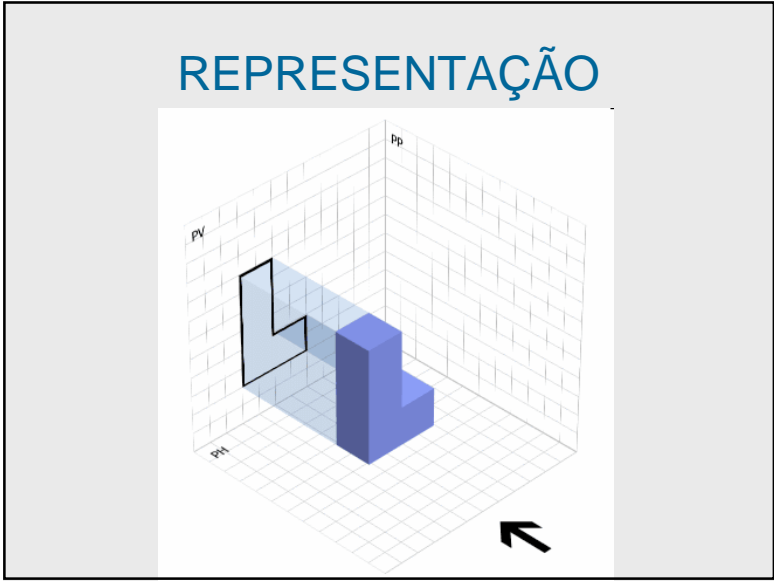
<http://www.ipb.pt/~luiscano/Perspectivalinear/Projeccoes.pdf>

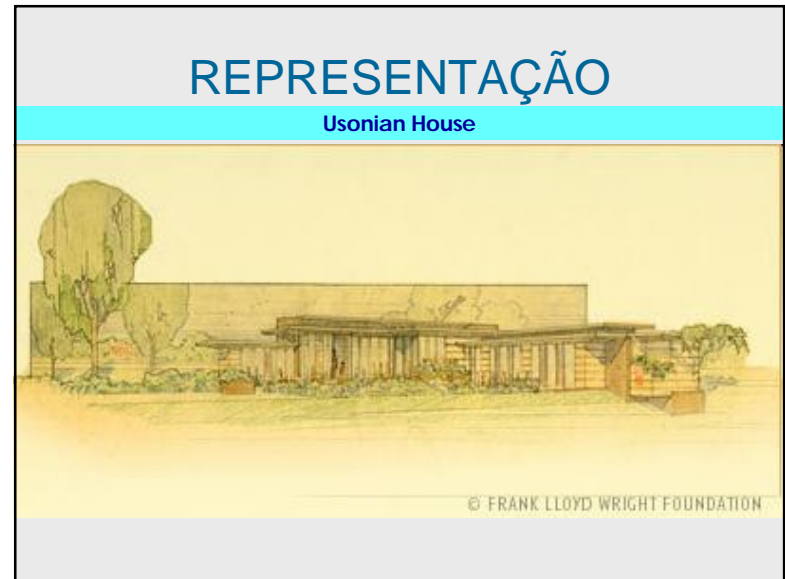
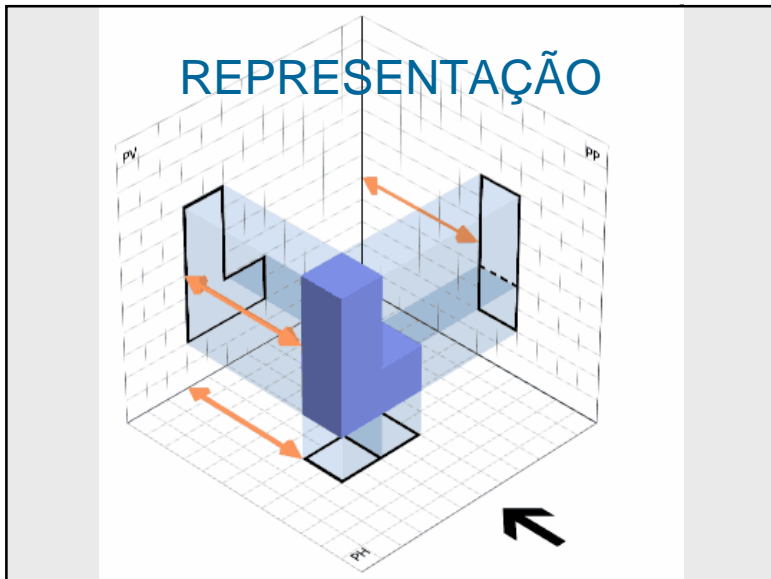
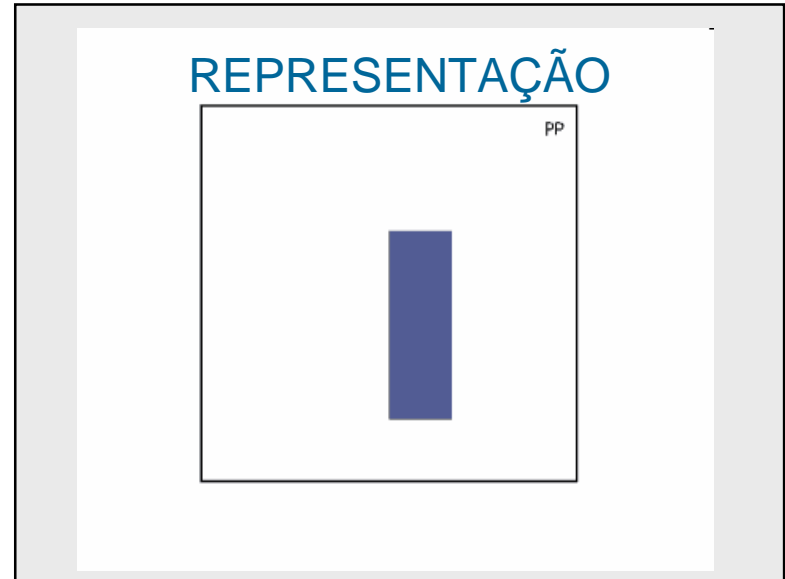
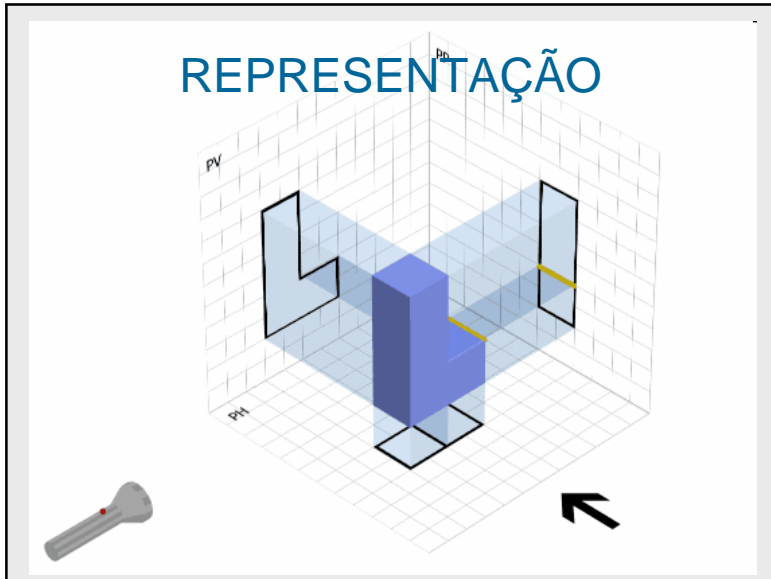
# REPRESENTAÇÃO



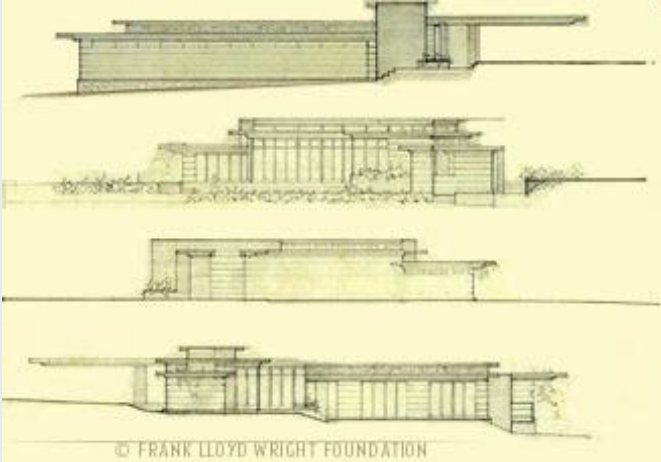
# REPRESENTAÇÃO



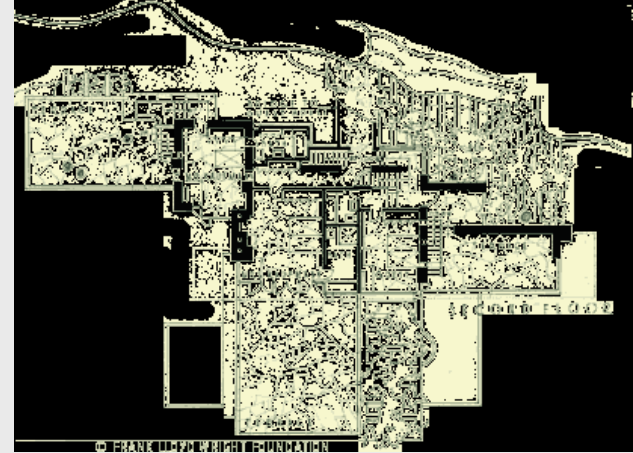




## REPRESENTAÇÃO



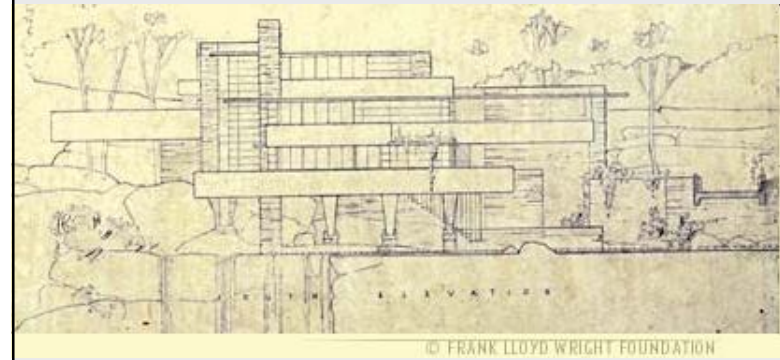
## REPRESENTAÇÃO



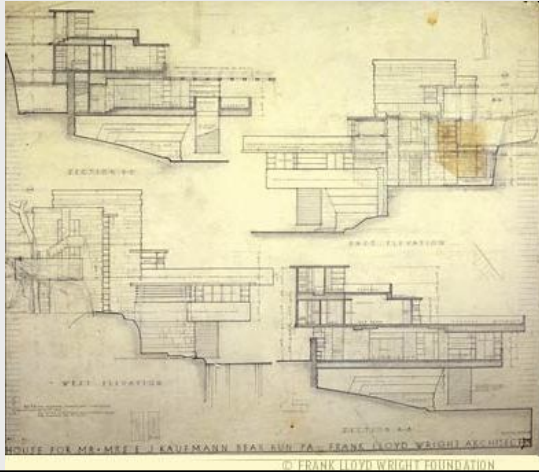
## REPRESENTAÇÃO



## REPRESENTAÇÃO



## REPRESENTAÇÃO



## REPRESENTAÇÃO



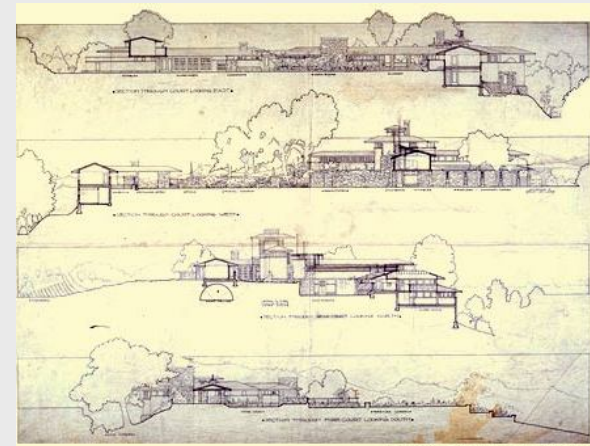
Hotel Imperial - Tóquio

## REPRESENTAÇÃO

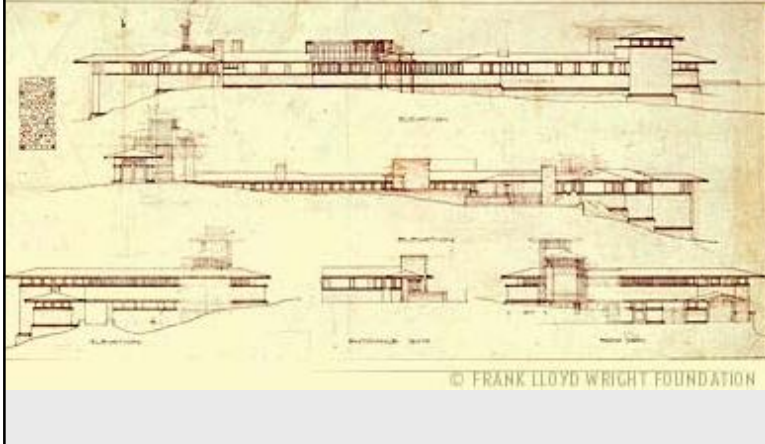


Taliesin

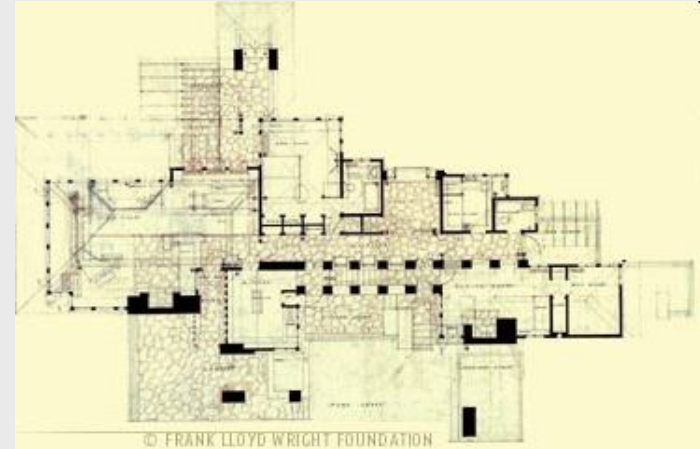
## REPRESENTAÇÃO



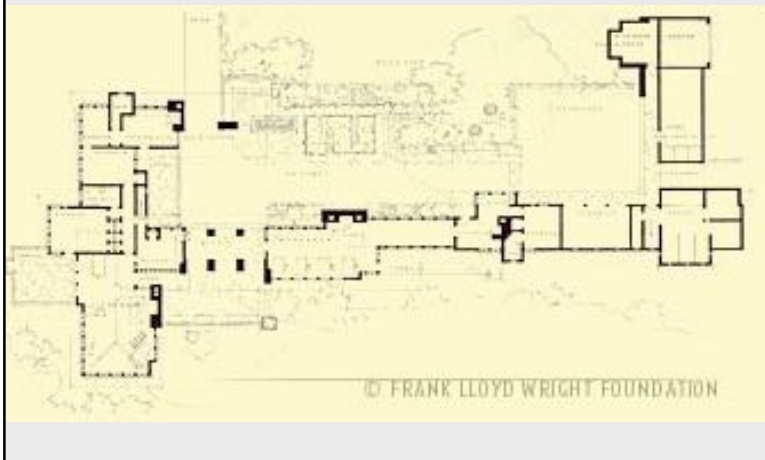
## REPRESENTAÇÃO



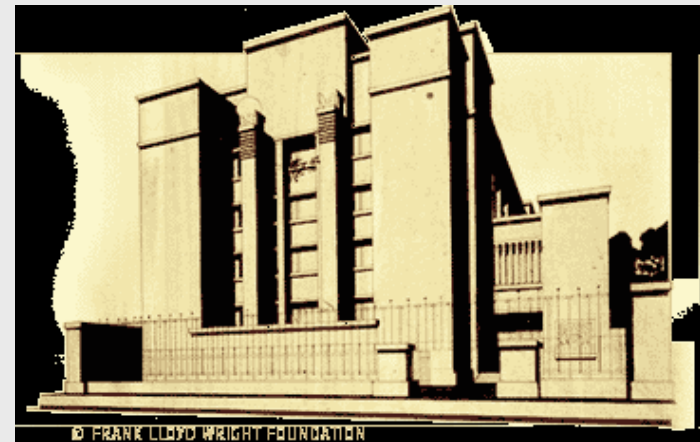
## REPRESENTAÇÃO



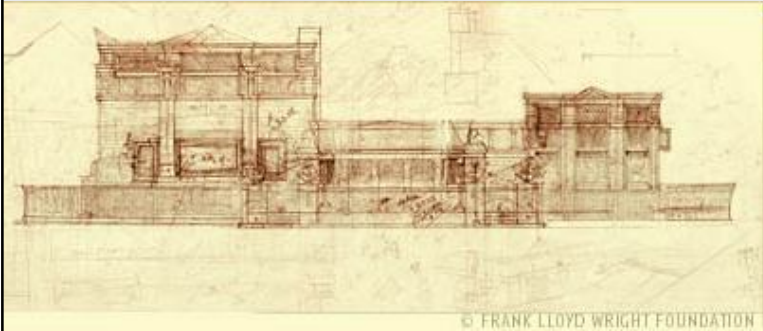
## REPRESENTAÇÃO



## REPRESENTAÇÃO



## REPRESENTAÇÃO



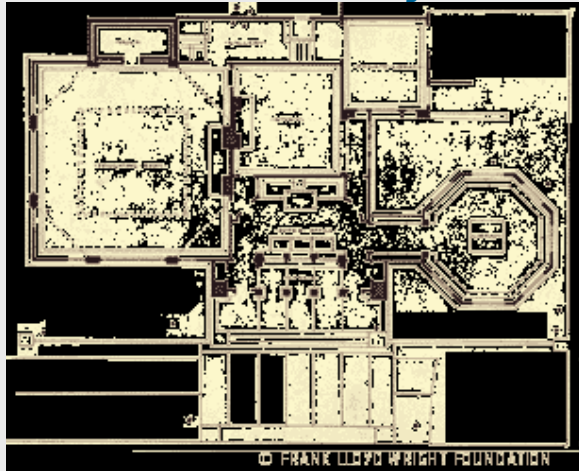
© FRANK LLOYD WRIGHT FOUNDATION

## REPRESENTAÇÃO



© FRANK LLOYD WRIGHT FOUNDATION

## REPRESENTAÇÃO

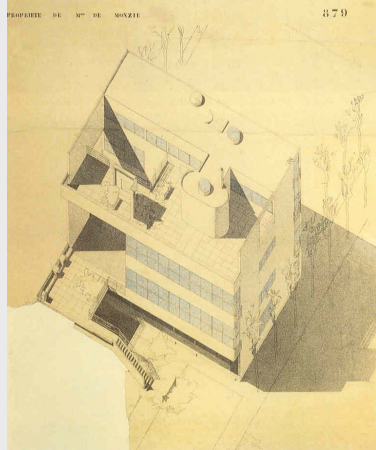


© FRANK LLOYD WRIGHT FOUNDATION

## REPRESENTAÇÃO



## REPRESENTAÇÃO

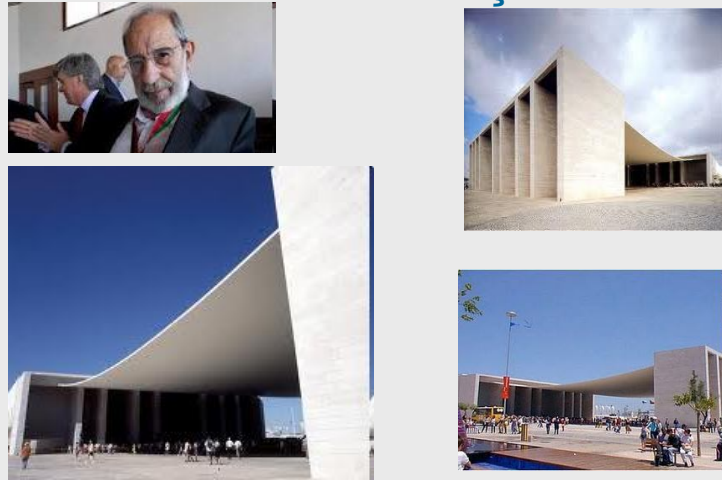


## REPRESENTAÇÃO

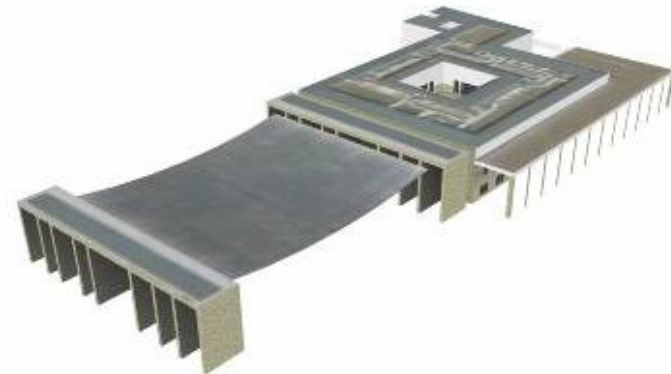


**Álvaro Siza-Vieira**  
*Casa de Chá da Boa Nova (1958-1963)*

## REPRESENTAÇÃO



## REPRESENTAÇÃO



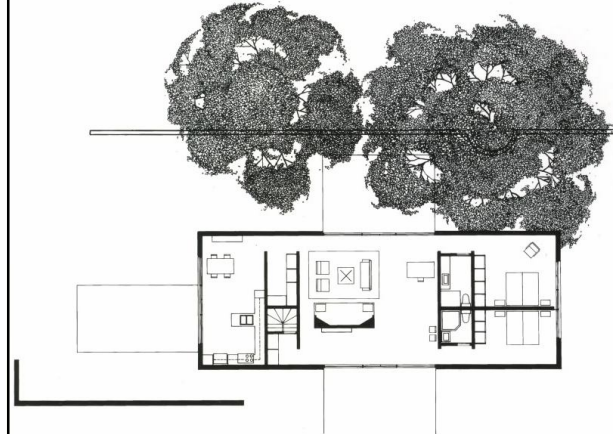


## REPRESENTAÇÃO

1951 Casa Oneto, Irvington - Philip Johnson



## REPRESENTAÇÃO



## REPRESENTAÇÃO



## REPRESENTAÇÃO

PLANTAS

