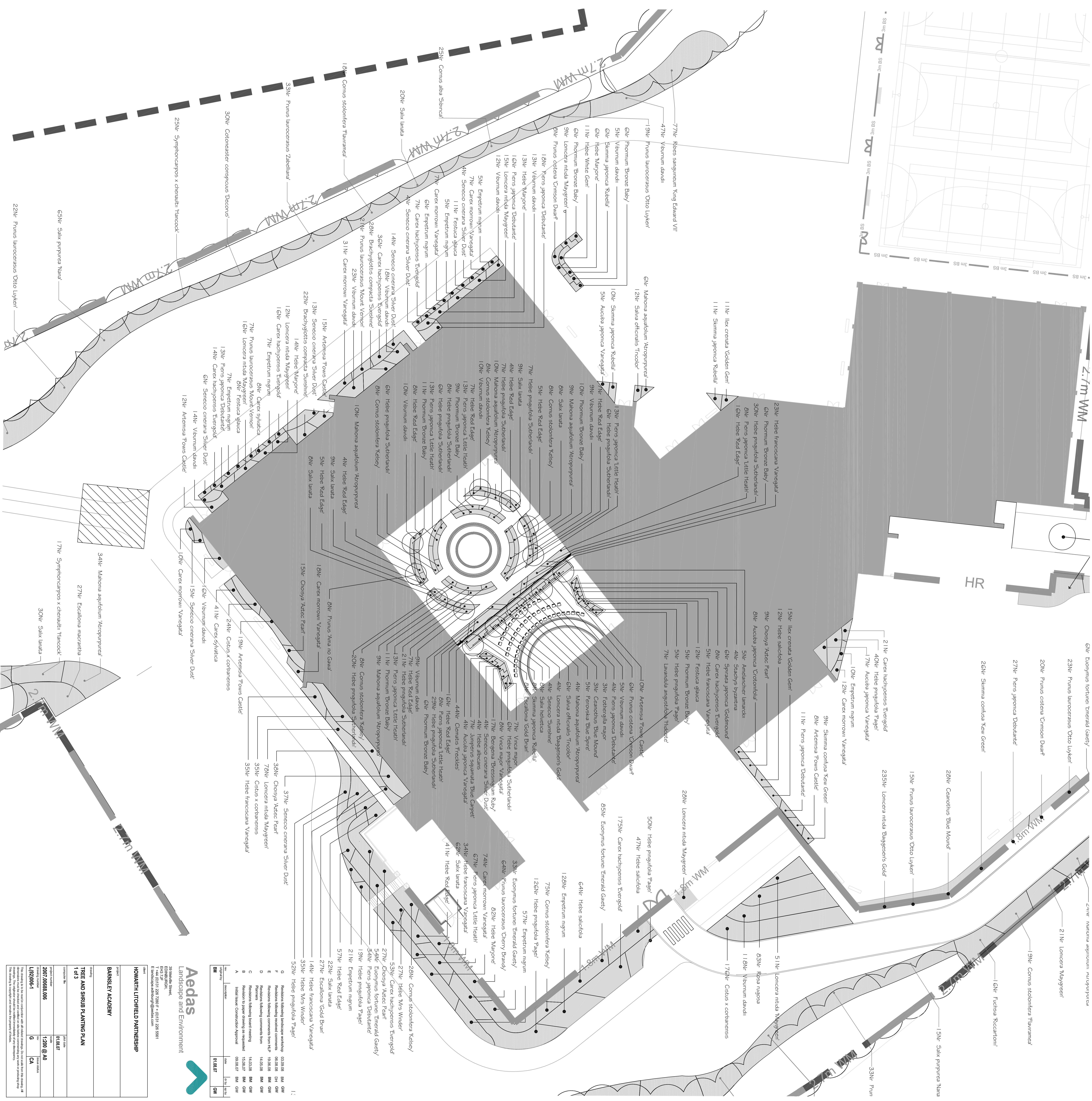


| Nr  | Plant Name                           | Form                  | Age | Girth | Height/Spread/Grade | Clean Stem | Root | Container | Breaks |
|-----|--------------------------------------|-----------------------|-----|-------|---------------------|------------|------|-----------|--------|
| 1   | Acer palmatum 'Cornutatum'           | Standard (Euka Heavy) | 3x  | 14-16 | 423-600cm           | 175-200    | CB   | 3L        | 5      |
| 24  | Acer rubrum                          | Fractured             | 2x  |       | 175-200cm           |            | RB   | 3L        | 5      |
| 54  | Amelanchier lamarckii                |                       |     |       | 20-30               |            | C    | 2L        | 5      |
| 10  | Artemisia Fovus Castle'              |                       |     |       | 20-30               |            | C    | 2L        | 5      |
| 8   | Aucuba japonica 'Cordifolia'         |                       |     |       | 30-40cm             |            | C    | 2L        | 2      |
| 69  | Aucuba japonica 'Variegata'          |                       |     |       | 20-30               |            | C    | 2L        | 3      |
| 9   | Aucuba japonica 'Variegata'          |                       |     |       | 30-40cm             |            | C    | 2L        | 3      |
| 182 | Berberis thunbergii                  |                       |     |       | 20-30               |            | C    | 2L        | 3      |
| 17  | Bergeria 'Bresingham Ruby'           |                       |     |       | 20-30               |            | C    | 1.5-2L    | 3      |
| 50  | Brachyglottis compacta 'Sunshine'    |                       |     |       | 1.5-2L              |            | C    | 1.5-2L    | 3      |
| 330 | Carex hachigensis 'Evergold'         |                       |     |       | 1.5-2L              |            | C    | 1.5-2L    | 3      |
| 159 | Carex morrowii 'Variegata'           |                       |     |       | 1.5-2L              |            | C    | 1.5-2L    | 3      |
| 49  | Carex sylvatica                      |                       |     |       | 30-40cm (D)         |            | C    | 3L        | 5      |
| 97  | Canadensis Blue Mound'               |                       |     |       | 20-30               |            | C    | 2L        | 5      |
| 202 | Chionaya Aztec Pearl'                |                       |     |       | 30-40               |            | C    | 3L        | 3      |
| 319 | Cistus x corbariensis                |                       |     |       | 60-80cm             |            | C    | 3L        | 2      |
| 44  | Clematis 'Fredkles'                  |                       |     |       | 40-60               |            | C    | 2L        | 3      |
| 148 | Comus alba 'Spinal'                  |                       |     |       | 40-60               |            | C    | 2L        | 3      |
| 117 | Comus stolonifera 'Flammaris'        |                       |     |       | 40-60               |            | C    | 2L        | 3      |
| 481 | Comus stolonifera 'Kelsey'           |                       |     |       | 30-40               |            | C    | 2L        | 3      |
| 52  | Corylus avellana 'Aurea'             |                       |     |       | 40-60               |            | C    | 3L        | 2      |
| 57  | Corylus maxima 'Purpurea'            |                       |     |       | 40-60               |            | C    | 3L        | 2      |
| 60  | Cotoneaster conspicuus 'Deconus'     |                       |     |       | 30-40               |            | C    | 2L        | 3      |
| 81  | Cotoneaster damsoni 'Coral Beauty'   |                       |     |       | 30-40               |            | C    | 2L        | 3      |
| 18  | Cydonia scopulorum                   |                       |     |       | 40-60               |            | C    | 2L        | 5      |
| 29  | Cydonia x Praxaea 'Warmaster'        |                       |     |       | 30-40               |            | C    | 1.5-2L    | 5      |
| 246 | Empetrum nigrum                      |                       |     |       | 20-30cm             |            | C    | 2L        | 5      |
| 29  | Escallonia Gold Bear'                |                       |     |       | 40-60               |            | C    | 1.5-2L    | 5      |
| 59  | Escallonia Gold Bear'                |                       |     |       | 15-20(D)            |            | C    | 2L        | 5      |
| 193 | Eucalyptus torquata 'Emerald Galaxy' |                       |     |       | 30-40cm             |            | C    | 3L        | 5      |
| 31  | Festuca glauca                       |                       |     |       | 30-40cm             |            | C    | 3L        | 5      |
| 3   | Fothergilla major                    |                       |     |       | 20-30               |            | C    | 3L        | 3      |
| 16  | Fuchsia Riccartonii'                 |                       |     |       | 40-60               |            | C    | 3L        | 3      |
| 116 | Gemya elliptica                      |                       |     |       | 20-30               |            | C    | 3L        | 3      |
| 116 | Genista Lydia                        |                       |     |       | 20-30               |            | C    | 3L        | 3      |
| 273 | Hebe 'Marjorie'                      |                       |     |       | 30-40               |            | C    | 3L        | 3      |
| 120 | Hebe 'Midsommer Beauty'              |                       |     |       | 20-30(D)            |            | C    | 2L        | 3      |
| 62  | Hebe 'Mrs Winder'                    |                       |     |       | 20-30               |            | C    | 3L        | 3      |
| 177 | Hebe 'Red Edge'                      |                       |     |       | 20-30cm (D)         |            | C    | 3L        | 3      |
| 163 | Hebe 'White Gem'                     |                       |     |       | 20-30               |            | C    | 2L        | 3      |
| 197 | Hebe albicans                        |                       |     |       | 30-40(D)            |            | C    | 2L        | 3      |
| 111 | Hebe franciscana 'Variegata'         |                       |     |       | 20-30cm             |            | C    | 2L        | 3      |
| 364 | Hebe pinguifolia 'Page'              |                       |     |       | 20-30(D)            |            | C    | 2L        | 3      |
| 146 | Hebe pinguifolia 'Sutherland'        |                       |     |       | 30-40cm (D)         |            | C    | 3L        | 5      |
| 112 | Hebe salicifolia                     |                       |     |       | 30-40cm             |            | C    | 3L        | 3      |
| 111 | Hebe salicifolia                     |                       |     |       | 30-40               |            | C    | 3L        | 3      |
| 56  | Ilex aquifolium                      |                       |     |       | 40-60               |            | C    | 3L        | 3      |
| 110 | Ilex crenata 'Golden Gem'            |                       |     |       | 30-40cm             |            | C    | 3L        | 3      |
| 7   | Juniperus squamata 'Blue Carpet'     |                       |     |       | 20-30cm (D)         |            | C    | 2L        | 5      |
| 353 | Laurencia angustifolia 'Tidcora'     |                       |     |       | 20-30               |            | C    | 2L        | 5      |
| 86  | Lonicera 'Maygreen'                  |                       |     |       | 30-40               |            | C    | 2L        | 5      |
| 197 | Lonicera 'Maygreen'                  |                       |     |       | 30-40               |            | C    | 2L        | 5      |
| 239 | Lonicera nitida 'Baggesen's Gold'    |                       |     |       | 30-40m              |            | C    | 3L        | 3      |
| 182 | Lonicera nitida 'Maygreen'           |                       |     |       | 30-40m (D)          |            | C    | 3L        | 3      |
| 48  | Malonia aquifolium 'Atropurpurea'    |                       |     |       | 20-30cm             |            | C    | 2L        | 5      |
| 22  | Malonia aquifolium 'Atropurpurea'    |                       |     |       | 30-40               |            | RB   | 3L        | 4      |
| 121 | Malonia aquifolium 'Atropurpurea'    |                       |     |       | 30-40               |            | RB   | 3L        | 4      |
| 34  | Osmanthus x burkwoodii               |                       |     |       | 20-30cm             |            | C    | 2L        | 5      |
| 5   | Pernettya 'Blue Spry'                |                       |     |       | 20-30cm             |            | C    | 2L        | 5      |
| 70  | Pernettya 'Blue Spry'                |                       |     |       | 30-40cm             |            | C    | 3L        | 3      |
| 161 | Pernis japonica 'Delectant'          |                       |     |       | 30-40cm             |            | C    | 3L        | 3      |
| 138 | Pernis japonica 'Little Heath'       |                       |     |       | 30-40cm             |            | C    | 3L        | 3      |
| 8   | Punus 'Alma no Gawa'                 |                       |     |       | 250-300cm           |            | RB   | 3L        | 3      |
| 115 | Punus castanea 'Crimson Dwarf'       |                       |     |       | 30-40cm             |            | C    | 3L        | 3      |
| 64  | Punus lanceocerasus 'Cherry Brandy'  |                       |     |       | 30-40cm             |            | C    | 3L        | 3      |
| 178 | Punus lanceocerasus 'Mount Vernon'   |                       |     |       | 20-30               |            | C    | 1.5-2L    | 3      |
| 363 | Punus lanceocerasus 'Otto Luyker'    |                       |     |       | 30-40cm             |            | C    | 3L        | 3      |
| 134 | Punus lanceocerasus 'Zabelliana'     |                       |     |       | 20-30cm             |            | C    | 2L        | 2      |
| 41  | Pyraeantha rogersiana                |                       |     |       | 80-100              |            | C    | 2L        | 6      |
| 7   | Pyraeantha rogersiana                |                       |     |       | 350-425             |            | RB   | 1.0-2L    | 5      |
| 24  | Quercus palustris                    |                       |     |       | 12-14m              |            | RB   | 3x        | 5      |
| 1   | Quercus robur                        |                       |     |       | 12-14m              |            | RB   | 3x        | 5      |
| 11  | Quercus robur 'Fastigiat'            |                       |     |       | 350-400cm           |            | RB   | 5x        | 5      |
| 108 | Ribes sanguinum 'King Edward VII'    |                       |     |       | 40-60               |            | B    | 2L        | 3      |
| 50  | Rosa canina                          |                       |     |       | 30-40               |            | B    | 2L        | 3      |
| 67  | Rosa pratincolola                    |                       |     |       | 40-60               |            | B    | 2L        | 3      |
| 162 | Rosa pratincolola                    |                       |     |       | 40-60               |            | B    | 2L        | 3      |
| 83  | Rosa rugosa                          |                       |     |       | 30-40cm             |            | C    | 2L        | 3      |
| 35G | Rosa rugosa                          |                       |     |       | 30-40cm             |            | C    | 2L        | 3      |
| 8   | Saxifraga 'Helvetica'                |                       |     |       | 20-30               |            | C    | 3L        | 2      |
| 135 | Saxifraga 'Helvetica'                |                       |     |       | 20-30               |            | C    | 3L        | 2      |
| 287 | Saxifraga 'Helvetica'                |                       |     |       | 20-30               |            | C    | 3L        | 2      |
| 50  | Saxifraga 'Nana'                     |                       |     |       | 20-30               |            | C    | 2L        | 2      |
| 220 | Saxifraga 'Nana'                     |                       |     |       | 20-30               |            | C    | 2L        | 2      |
| 10  | Salvia officinalis 'Tredol'          |                       |     |       | 20-30               |            | C    | 3L        | 5      |
| 4   | Senecio 'Sunshine'                   |                       |     |       | 30-40               |            | C    | 3L        | 4      |
| 97  | Senecio cineraria 'Silver Dust'      |                       |     |       | 30-40cm             |            | C    | 3L        | 3      |
| 35  | Skimmia cornuta 'New Green'          |                       |     |       | 30-40               |            | C    | 3L        | 3      |
| 35  | Skimmia japonica 'Rubella'           |                       |     |       | 30-40cm             |            | C    | 3L        | 3      |
| 6   | Spiraea japonica 'Goldmound'         |                       |     |       | 20-30cm             |            | C    | 1.5-2L    | 3      |
| 4   | Stachys 'Byzantina'                  |                       |     |       | 40-60cm             |            | B    | 1.5-2L    | 3      |
| 67  | Symphoricarpos x densata 'Harrowck'  |                       |     |       | 300-350cm           |            | C    | 3L        | 3      |
| 5   | Tilia europaea 'Palilla'             |                       |     |       | 20-30               |            | C    | 3L        | 3      |
| 370 | Viburnum davidi                      |                       |     |       | 20-30cm             |            | C    | 3L        | 3      |
| 17  | Viburnum davidi                      |                       |     |       | 30-40cm             |            | C    | 3L        | 3      |
| 14  | Viburnum davidi                      |                       |     |       | 10-15               |            | C    | 1.5-2L    | 5      |
| 634 | Vivca major 'Variegata'              |                       |     |       | 10-15               |            | C    | 2L        | 5      |
| 263 | Vivca major 'Variegata'              |                       |     |       | 10-15               |            | C    | 2L        | 5      |



**Aedas**  
Landscape and Environment

301 Malvern Street  
Melbourne VIC 3004  
Tel: +61 3 9515 7200 F: +61 3 951 526 884  
E: landscape@aedas.com.au  
www.aedas.com.au

**HOWARTH LITCHFIELD PARTNERSHIP**

**BARNISLEY ACADEMY**

**TREE AND SHRUB PLANTING PLAN**

1 of 3

|             |               |
|-------------|---------------|
| PROJECT NO. | 1200 @ A0     |
| DATE        | 01/08/17      |
| PROJECT NO. | 2007/2008/005 |
| DATE        | 01/08/17      |
| PROJECT NO. | L02006-1      |
| DATE        | 01/08/17      |

This drawing is the sole property of Aedas and its associated companies. It is to be used for the project and site for which it was prepared. It is not to be used for any other project or site without the written consent of Aedas. It is to be used in accordance with the terms and conditions of the contract between Aedas and the client. It is to be used in accordance with the terms and conditions of the contract between Aedas and the client.