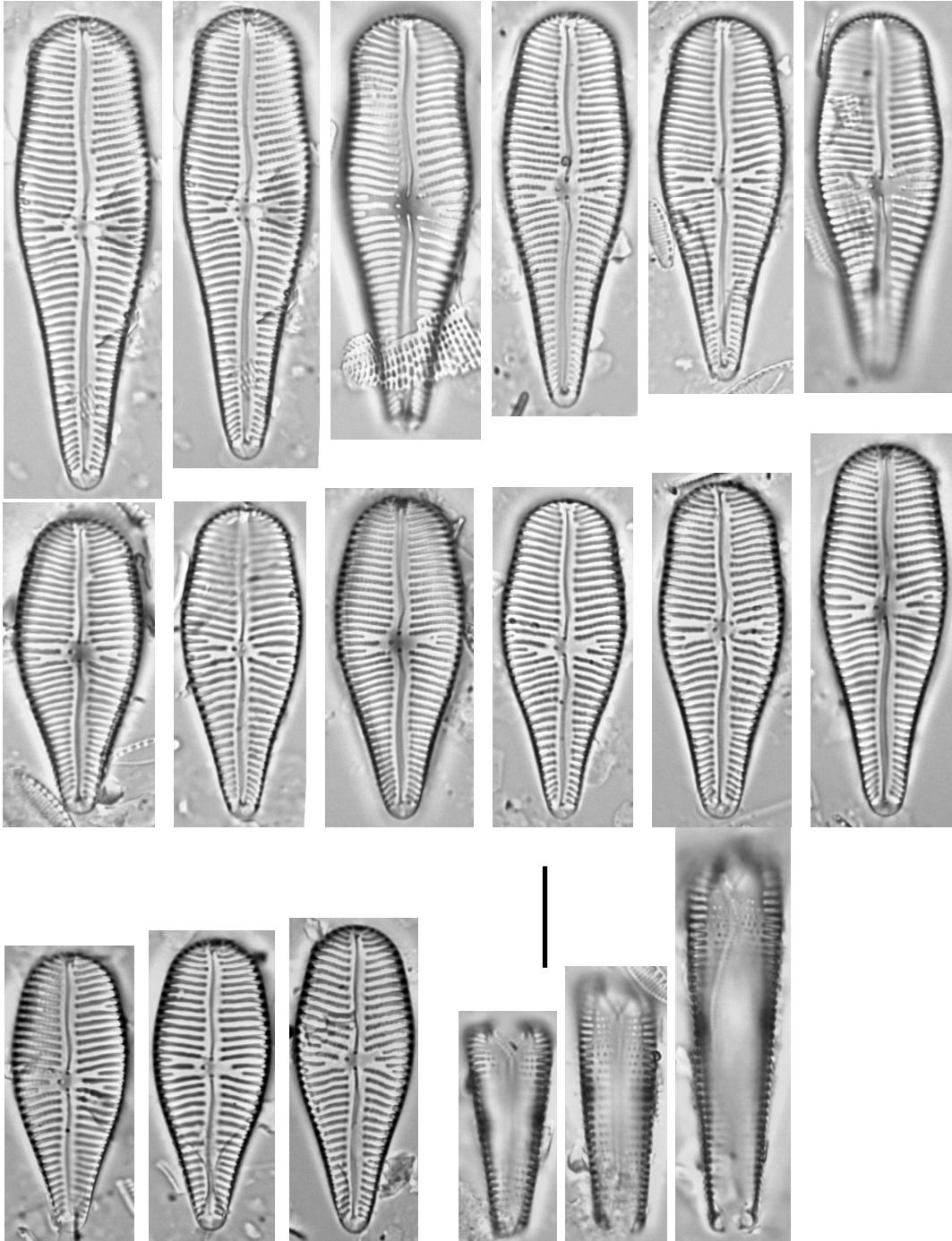


Gomphonema



1 - 15

16 - 18

Plate 129

LM: x1500

Figs 1-13: *Gomphonema truncatum* Ehrenberg, p. 26 [GTRU]

Figs 14-22: *Gomphonema* cf. *commutatum* Grunow in Van Heurck, p. 24

Scale bar = 10 μm

Figs 1-6: Ficalho, Vidigão Stream (Guadiana basin), 27-04-2006.

Figs 7-13: Gomes Aires, Mira River (Mira basin), 25-04-2006.

Figs 14-22: Bazágueda River (Tejo basin), 08-07-2006.

Figs 1-9, 13-22: Valve view.

Figs 10-12: Girdle view.

Gomphonema

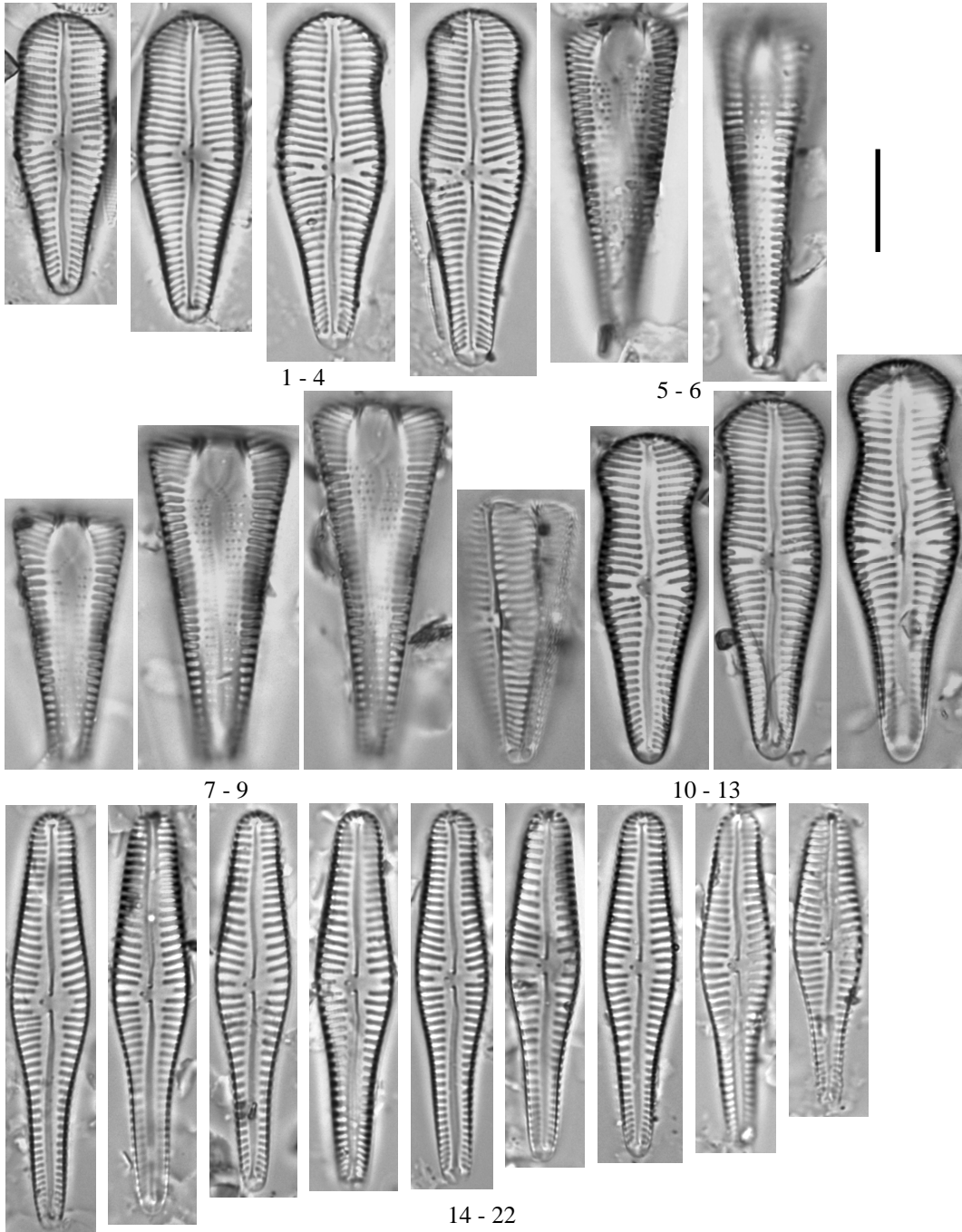


Plate 130

Figs 1, 2: *Gomphonema italicum* Kützing, p. 24 [GITA]

Scale bars = 5 μm

Figs 1, 2: Ficalho, Vidigão Stream (Guadiana basin), 27-04-2006.

Fig. 1: External valve view.

Fig. 2: Internal valve view.

Gomphonema

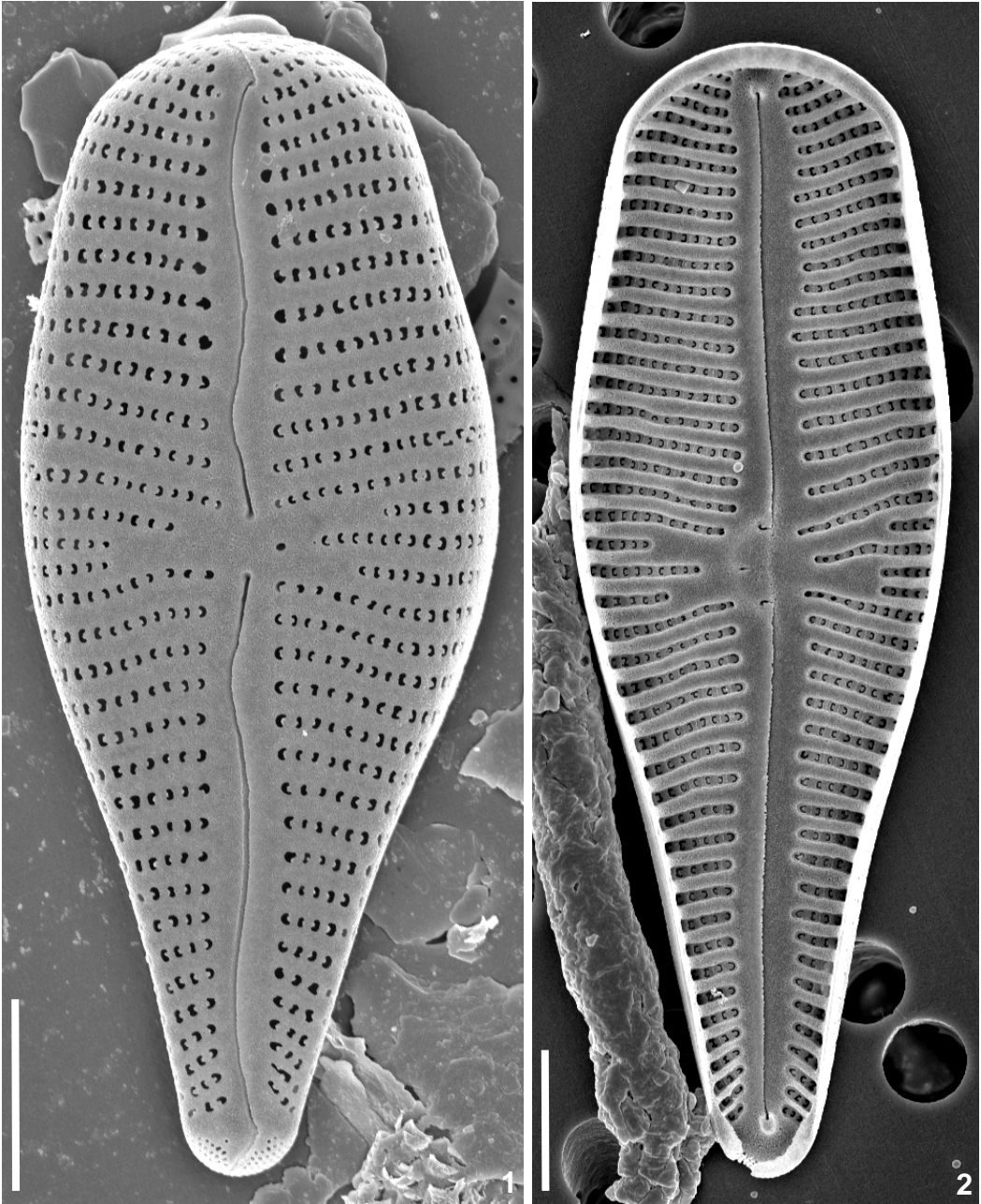


Plate 131

LM: x1500

Figs 1-27: *Gomphonema* sp.2, p. 27

Scale bar = 10 μ m

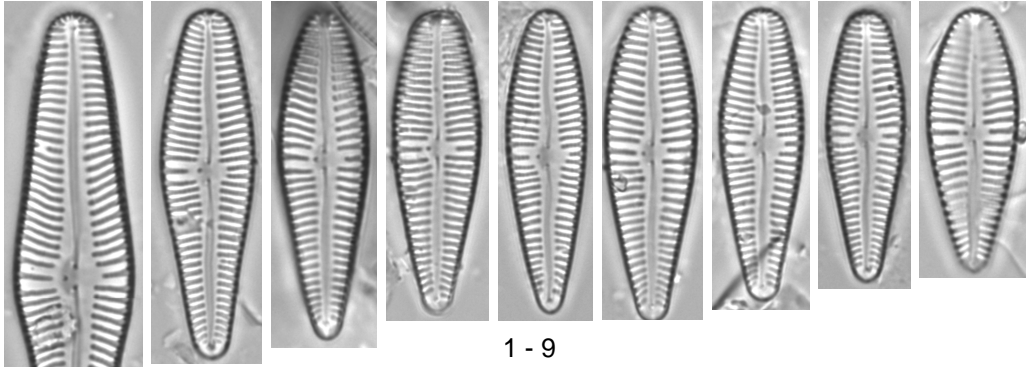
Figs 1-9: Monte Novo Reservoir, Degebe River (Guadiana basin), 02-02-2006.

Figs 10-21: Ficalho, Vidigão Stream (Guadiana basin), 27-04-2006.

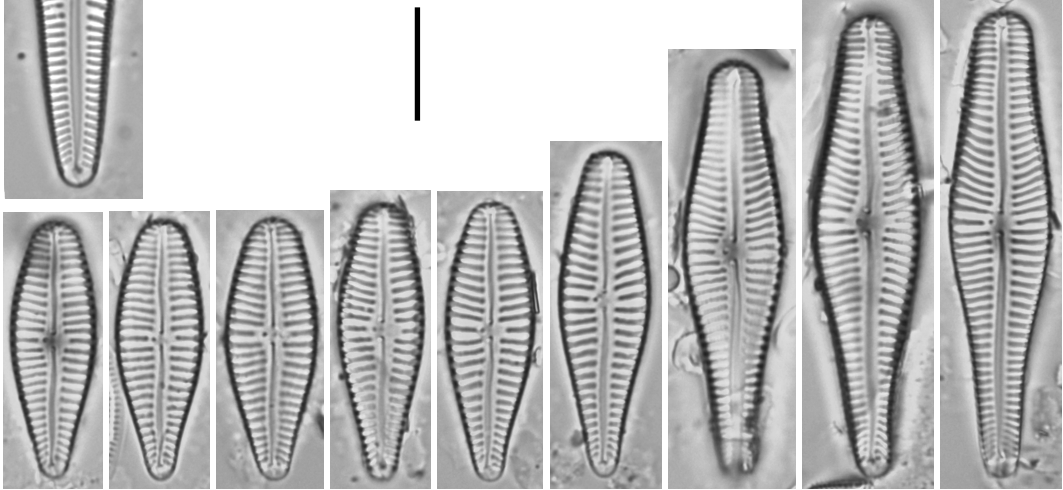
Figs 22-27: Azambuja Stream (Guadiana basin), 15-05-2006.

Figs 1-27: Valve view.

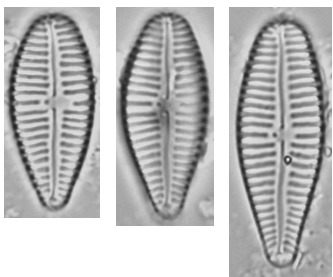
Gomphonema



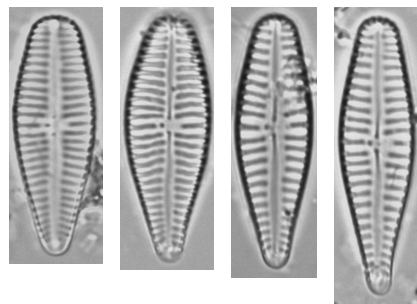
1 - 9



10 - 18



19 - 21



22 - 27

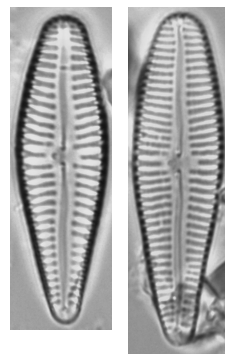


Plate 132

Figs 1-2: *Gomphonema* sp.2, p. 27

Scale bars = 1 μm

Figs 1-2: Monte Novo Reservoir, Degebe River (Guadiana basin), 02-02-2006.

Fig. 1: External valve view.

Fig. 2: Internal valve view.

Gomphonema

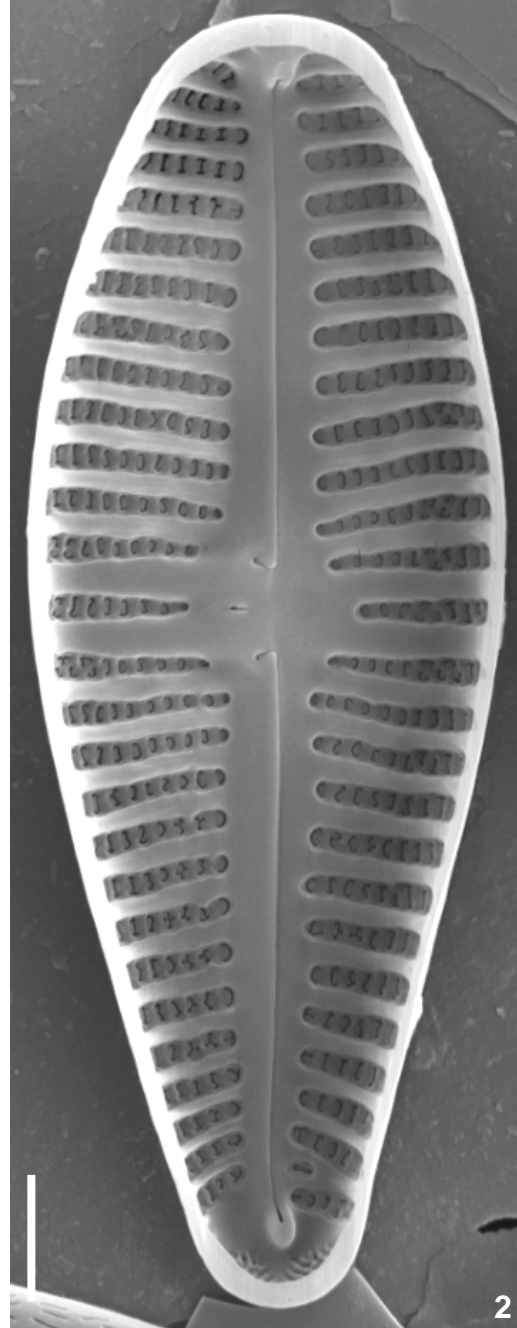
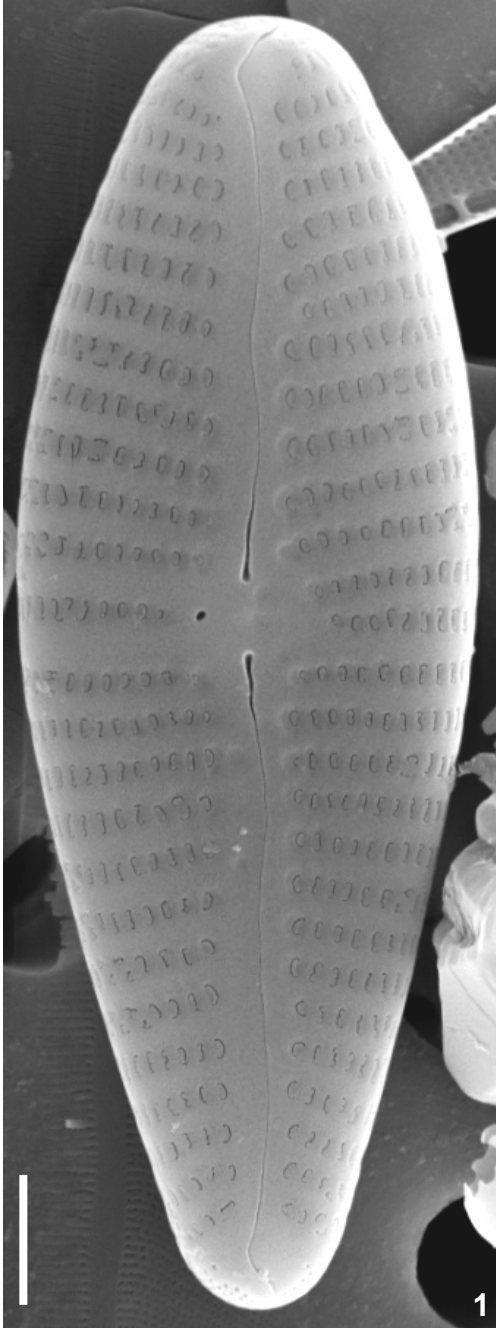


Plate 133

LM: x1500

Figs 1-24: *Gomphonema rosenstockianum* Lange-Bertalot & E. Reichardt, p. 26
[GROS]

Figs 25-42: *Gomphosphenia* aff. *lingulatiformis* (Lange-Bertalot & E.
Reichardt) Lange-Bertalot, p. 27

Figs 43-60: *Gomphosphenia oahuensis* (Hustedt) Lange-Bertalot, p. 27 [GOAH]

Scale bar = 10 μ m

Figs 1-12: Pereira, Arão Stream (Ribeiras do Algarve basin), 06-05-2006.

Figs 13-24: Tôr, Algibre Stream (Ribeiras do Algarve basin), 17-04-2006.

Figs 25-42: Alcabideque, Bruscos Stream (Mondego basin), 12-06-2007.

Figs 43-60: Retorta, Ave River (Ave basin), 16-09-2007.

Figs 1-11, 15-60: Valve view.

Figs 12-14: Girdle view.

Gomphonema
Gomphosphenia

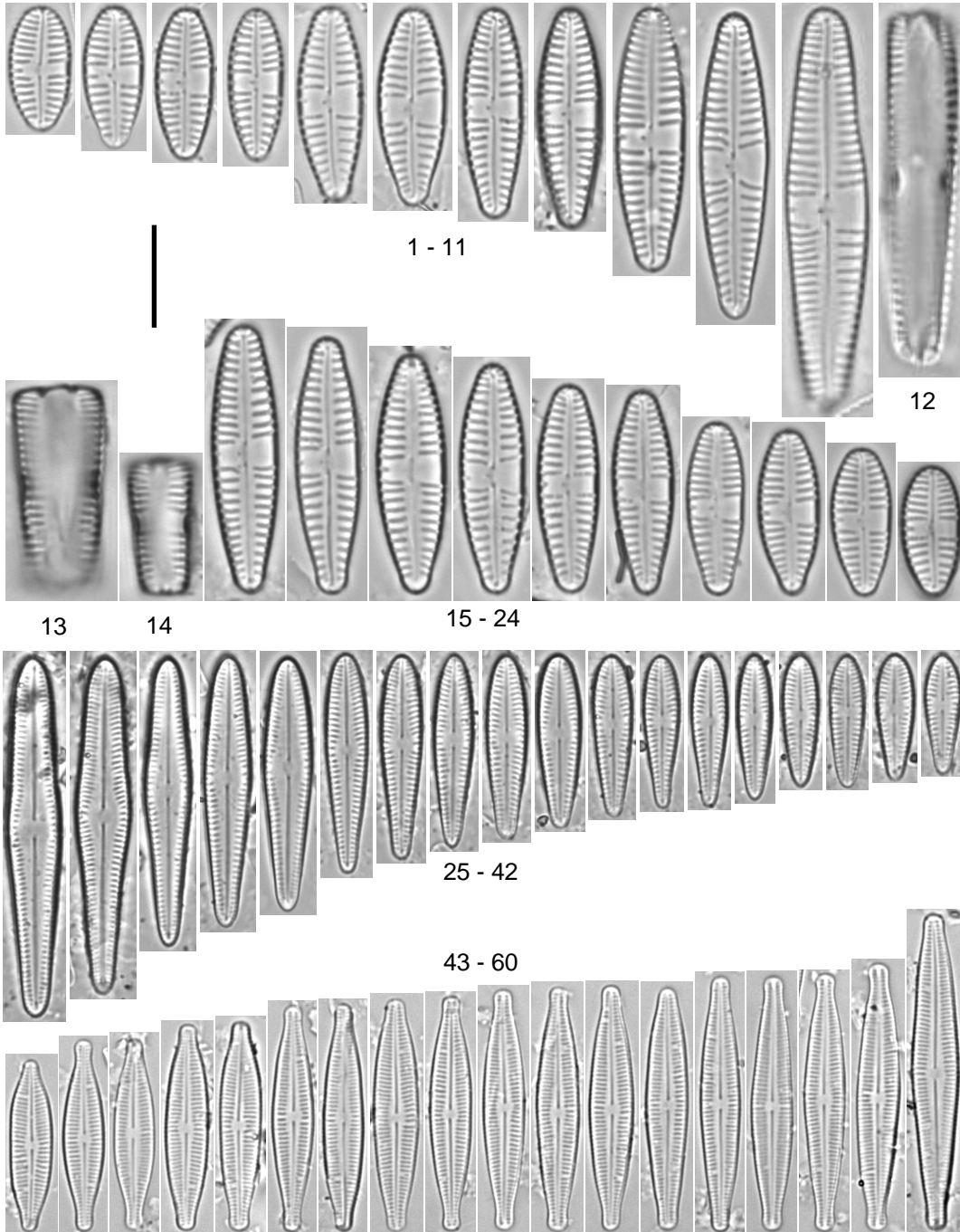


Plate 134

Figs 1-5: *Gomphonema rosenstockianum* Lange-Bertalot & E. Reichardt, p. 26 [GROS]

Scale bars = 1 μm

Figs 1-5: Pereira, Arão Stream (Ribeiras do Algarve basin), 06-05-2006.

Fig. 1: External valve view.

Fig. 2: External girdle view.

Fig. 3: Internal valve view.

Fig. 4: Detail of central area in external view.

Fig. 5: Detail of central area in internal view.

Gomphonema

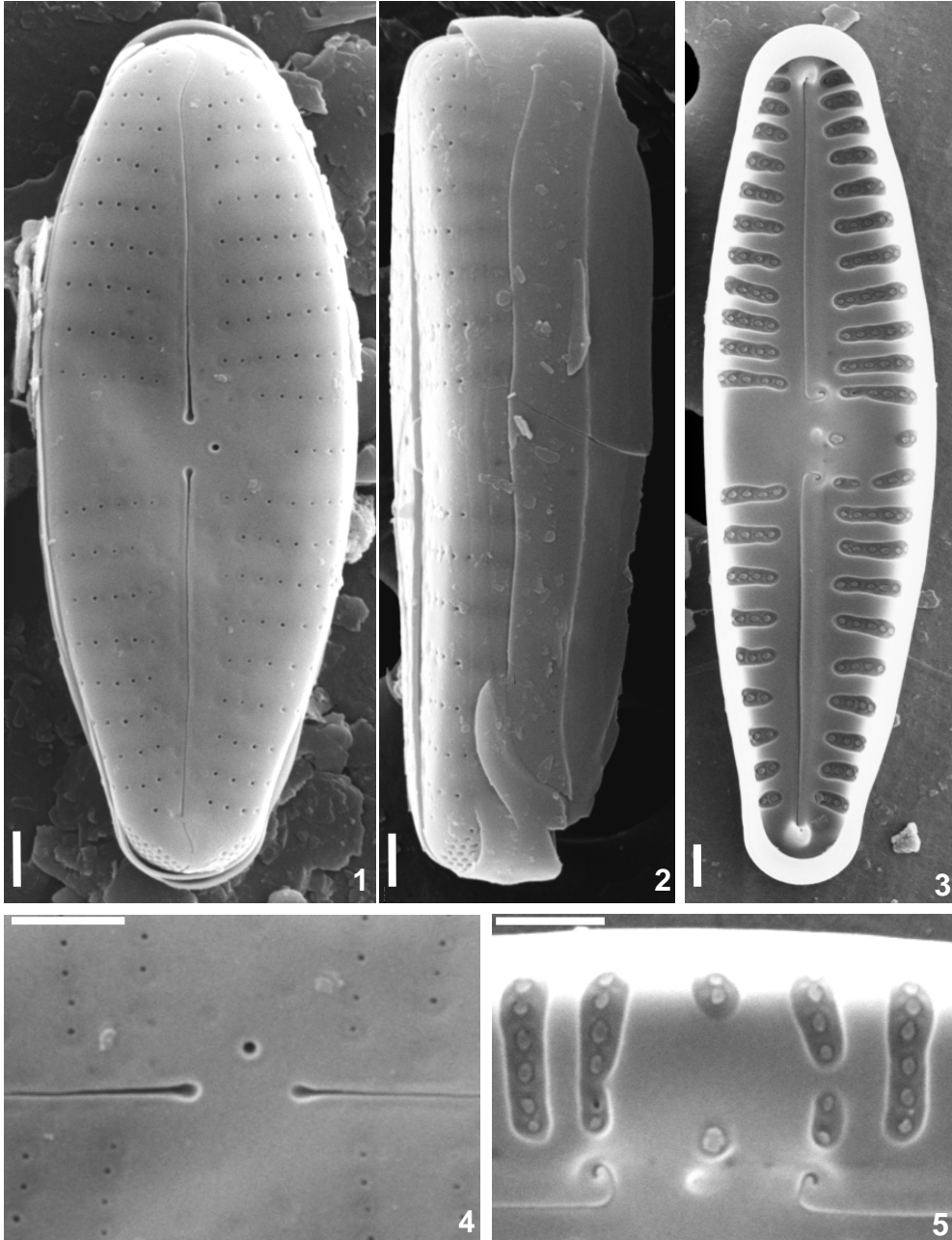


Plate 135

Figs 1-4: *Gomphosphenia* aff. *lingulatiformis* (Lange-Bertalot & E. Reichardt)
Lange-Bertalot, p. 27

Scale bars (Figs 1, 2) = 5 μm Scale bars (Figs 3, 4) = 1 μm

Figs 1-4: Alcabideque, Bruscos Stream (Mondego basin), 12-06-2007.

Fig. 1: External valve view.

Fig. 2: Internal valve view.

Fig. 3: Detail of the apical area in internal view.

Fig. 4: Detail of the central area in internal view.

Gomphosphenia

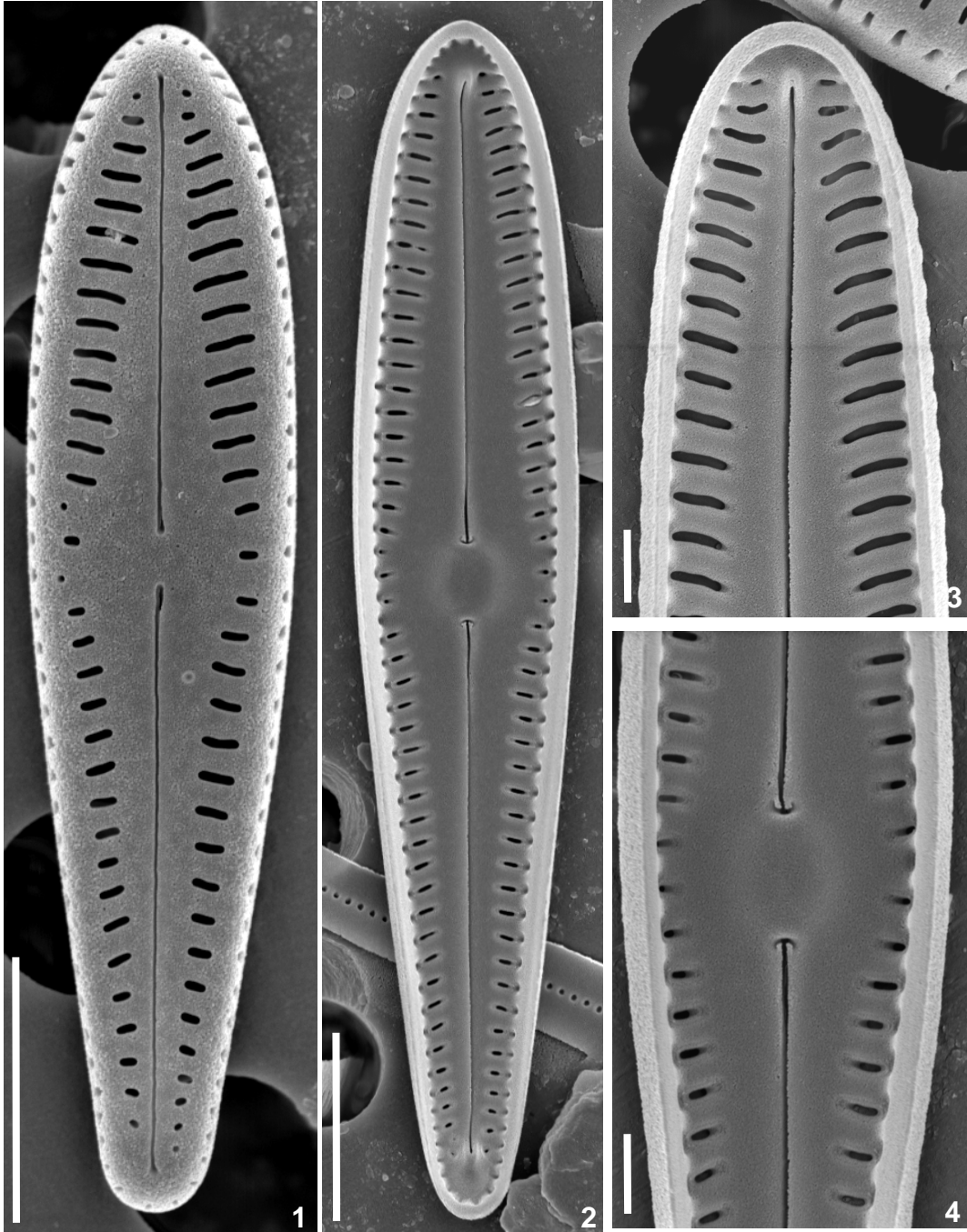


Plate 136

Figs 1-4: *Gomphosphenia oahuensis* (Hustedt) Lange-Bertalot, p. 27 [GOAH]

Scale bars (Figs 1, 2) = 5 μm Scale bars (Figs 3, 4) = 1 μm

Figs 1-4: Retorta, Ave River (Ave basin), 16-09-2007.

Fig. 1: External valve view.

Fig. 2: Internal valve view.

Fig. 3: Detail of the central area in external view.

Fig. 4: Detail of the central area in internal view.

Gomphosphenia

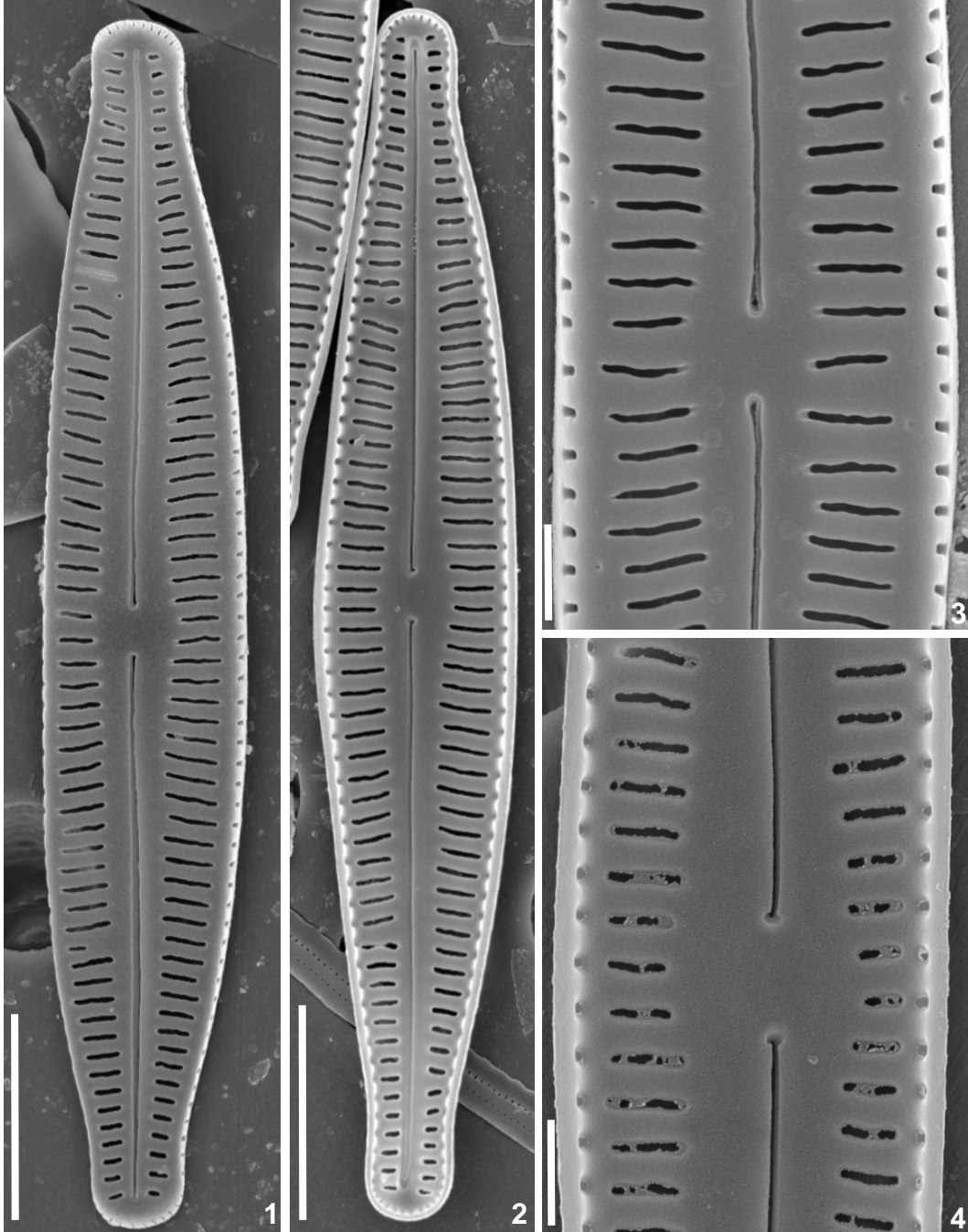


Plate 137

LM: x1500

Figs 1-48: *Reimeria sinuata* (W. Gregory) Kociolek & Stoermer, p. 27 [RSIN]

Figs 49-71: *Reimeria uniseriata* Sala, Guerrero & Ferrario, p. 27 [RUNI]

Scale bar = 10 μ m

Figs 1-31: Besteiros, Seixe Stream (Ribeiras do Algarve basin), 16-04-2006.

Figs 32-48: Belmonte, Zêzere River (Tejo basin), 07-07-2006.

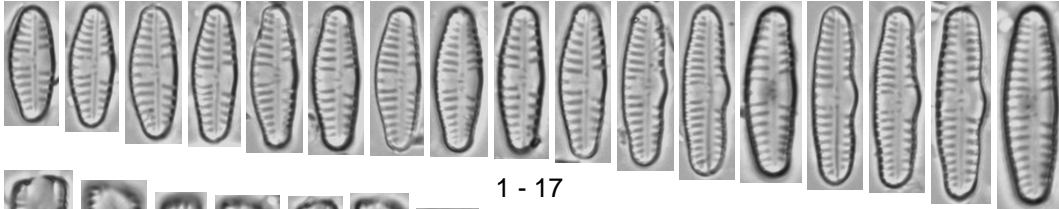
Figs 49-56: Tôr, Algibre Stream (Ribeiras do Algarve basin), 02-03-2006.

Figs 57-71: Benémola, Fonte Menalva Stream (Ribeiras do Algarve basin), 03-03-2006.

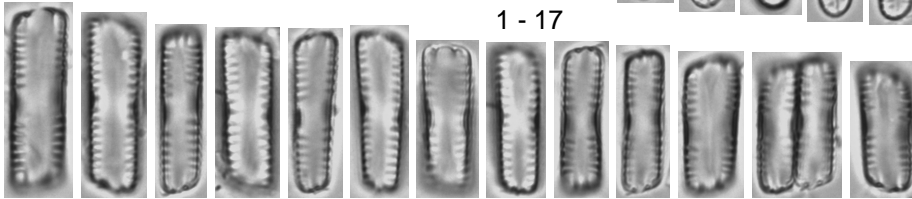
Figs 1-17, 32-56, 60-71: Valve view.

Figs 18-31, 57-59: Girdle view.

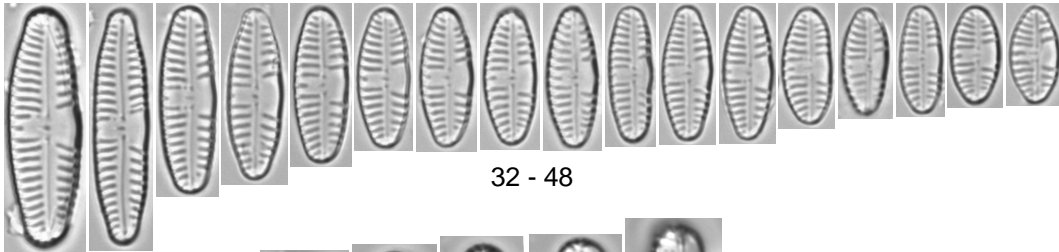
Reimeria



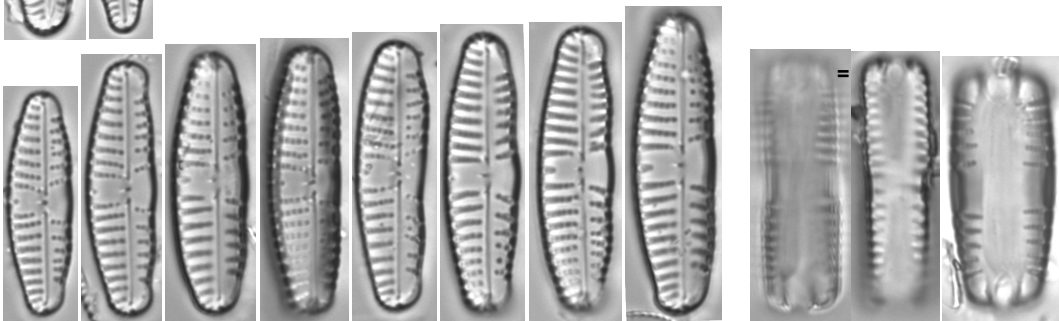
1 - 17



18 - 31

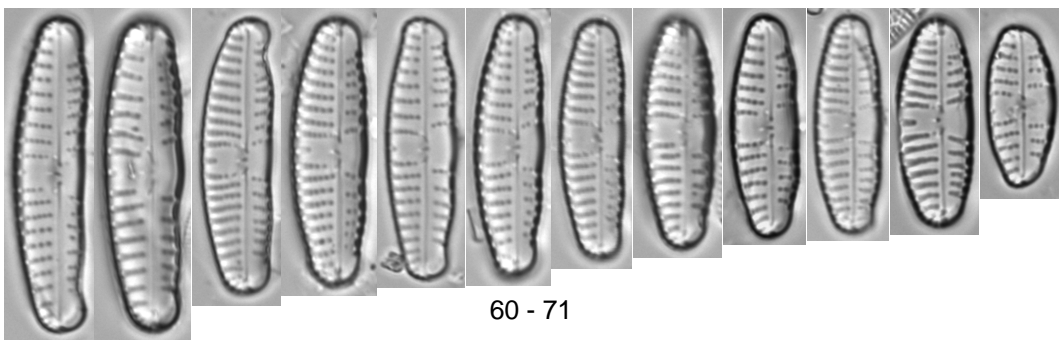


32 - 48



49 - 56

57 - 59



60 - 71

Plate 138

LM: x1500

Figs 1-58: *Cocconeis euglypta* Ehrenberg, p. 27 [CEUG]

Scale bar = 10 μm

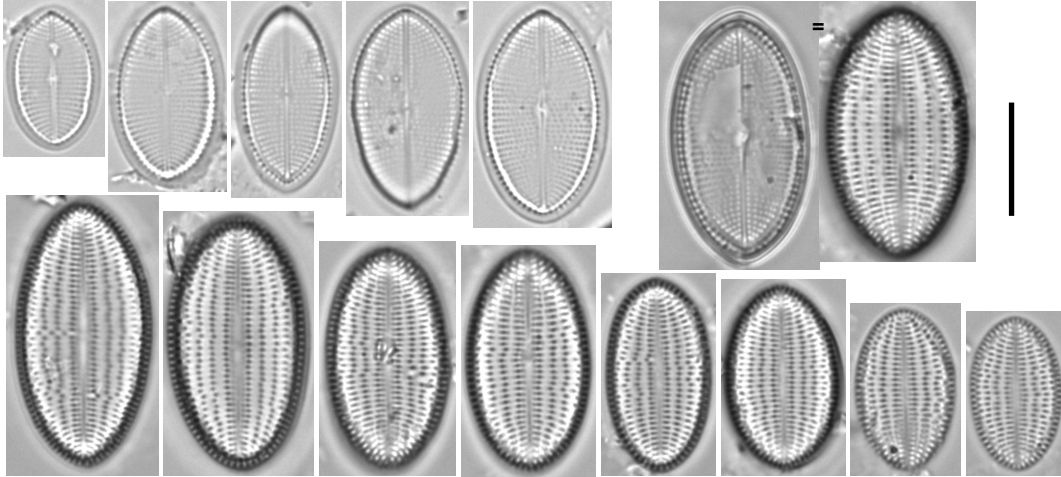
Figs 1-30: Vale da Arca, Vale da Ursa Stream (Sado basin), 05-04-2006.

Figs 31-40: Boina Stream (Ribeiras do Algarve basin), 04-05-2006.

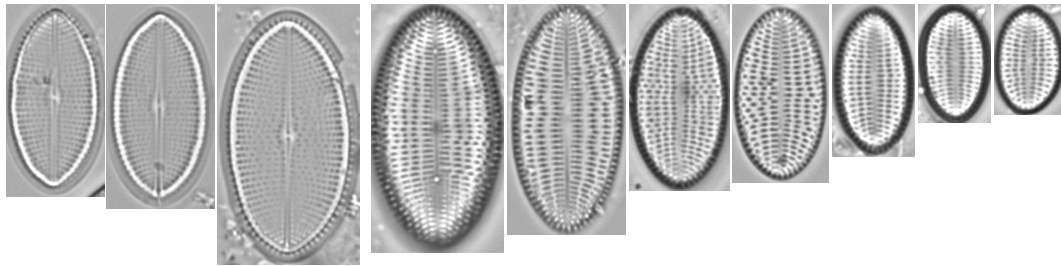
Figs 41-58: Pavia, Freixo Stream (Tejo basin), 03-07-2006.

Figs 1-58: Valve view.

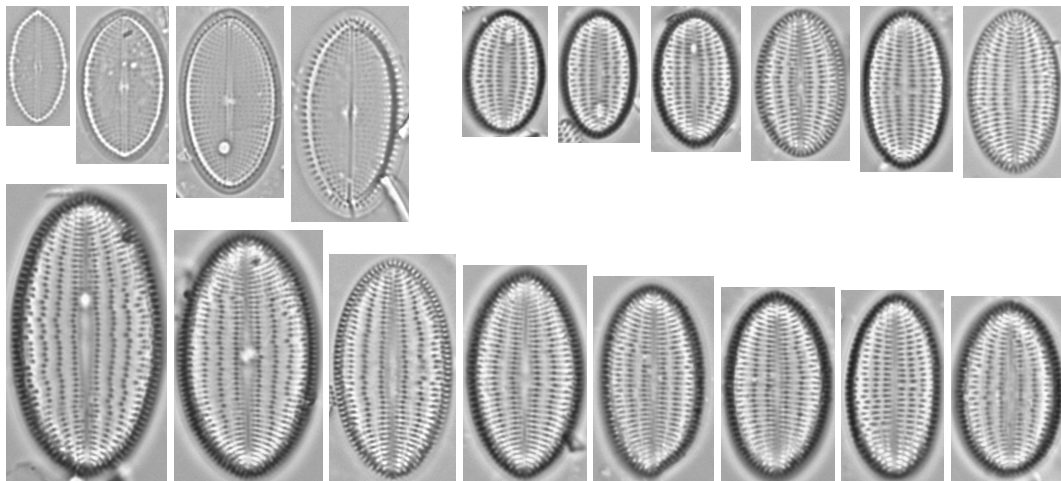
Cocconeis



1 - 30



31 - 40



41 - 58

Plate 139

LM: x1500

Figs 1-24: *Cocconeis lineata* Ehrenberg, p. 28 [CLNT]

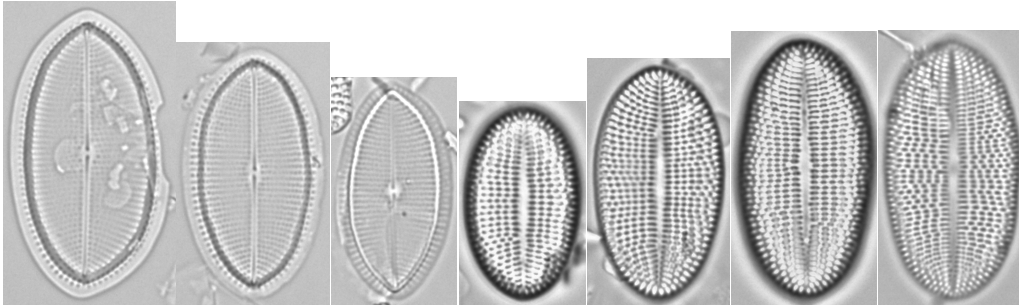
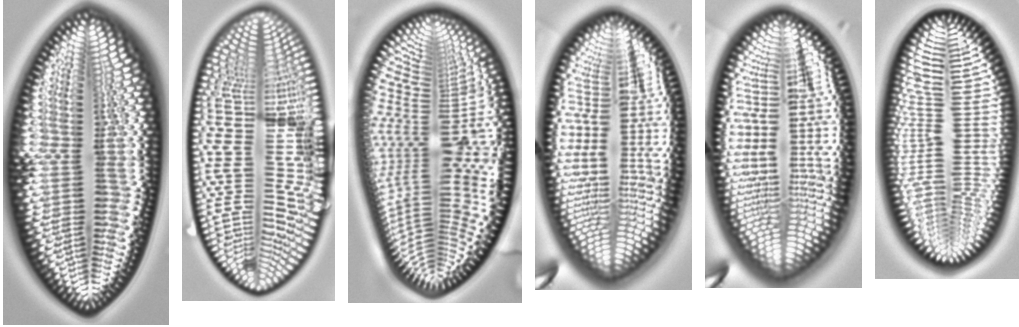
Scale bar = 10 μm

Figs 1-13: Curros Stream (Douro basin), 14-08-2007.

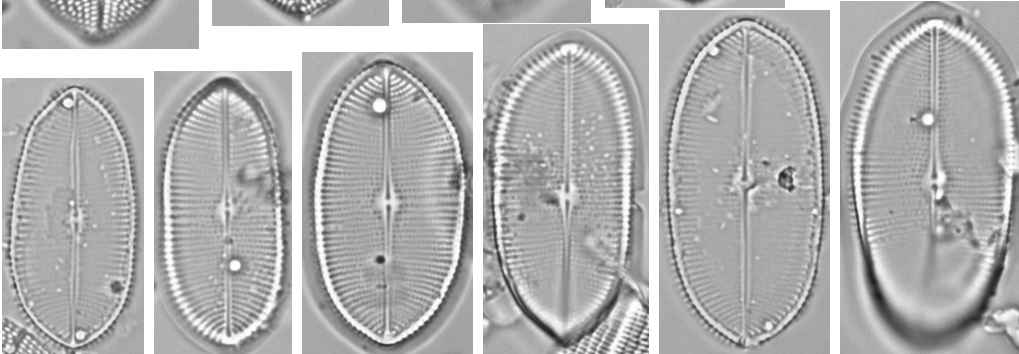
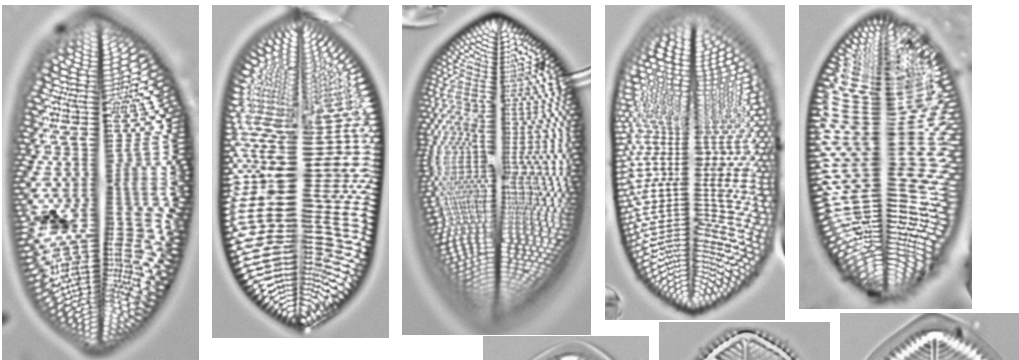
Figs 14-24: Lavacolhos, Ximassa Stream (Tejo basin), 08-07-2006.

Figs 1-24: Valve view.

Cocconeis



1 - 13



14 - 24

Plate 140

LM: x1500

Figs 1-11: *Cocconeis lineata* Ehrenberg, p. 28 [CLNT]

Figs 12-24: *Cocconeis pseudolineata* (Geitler) Lange-Bertalot, p. 28 [COPL]

Scale bar = 10 μm

Figs 1-11: Alambiques Stream (Douro basin), 21-07-2007.

Figs 12-17: Cabroeira de Baixo, Xévara River (Guadiana basin), 24-05-2006.

Figs 18-24: Vale da Arca, Vale da Ursa Stream (Sado basin), 05-04-2006.

Figs 1-24: Valve view.