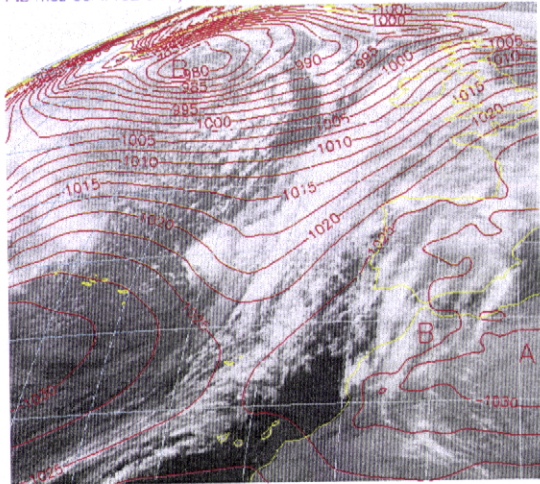
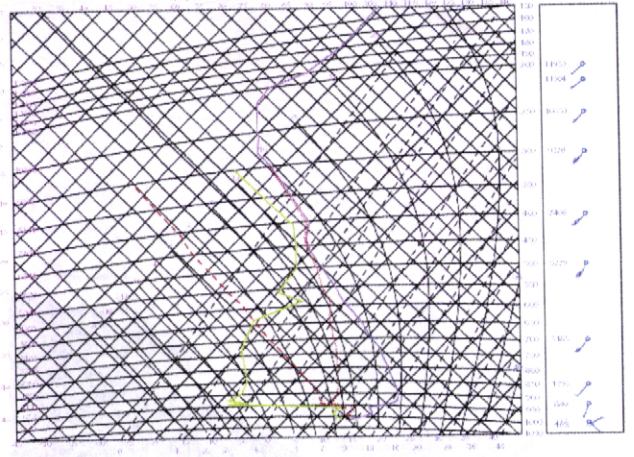


FIB ms6 30/1/102 0 00, S/c MSL 29/1/102 12h fc+12 vl 30/1/2002 0h



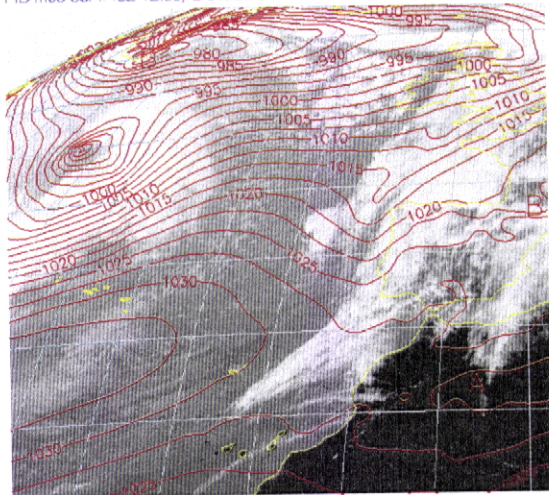
1a)

88578 LISBOA, 23120193/001UC
 Coordenadas: 38.45N 9.7W, Altitude: 185 m
 CAPS: **** Jkg Ckt **** Jkg LL 5.7 C hPa rslat **** hPa 1196, 11.5 mm (ale 100 hPa)
 Temperatura: 21.5 hPa, Vento max: 117 hPa



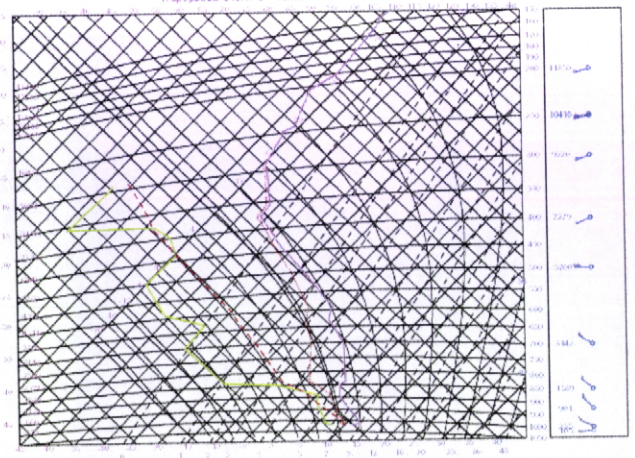
1b)

FIB ms6 30/1/102 12 00, S/c MSL 29/1/102 12h fc+12 vl 30/1/2002 12h



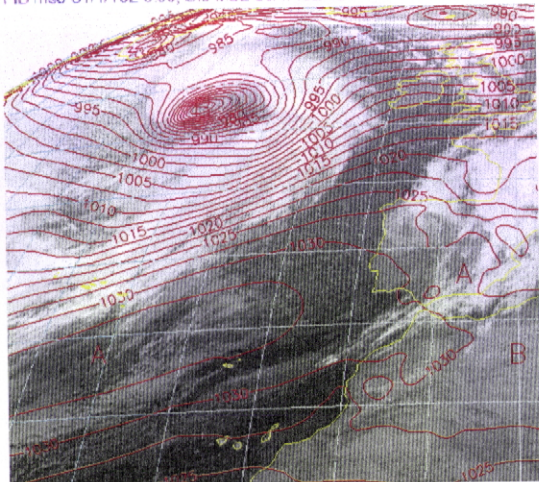
2a)

88579 LISBOA, 20020111/001UC
 Coordenadas: 38.45N 9.7W, Altitude: 185 m
 CAPS: **** Jkg Ckt **** Jkg LL 6.1 C hPa rslat **** hPa 1199, 9.5 mm (ale 291 hPa)
 Temperatura: 24.5 hPa, Vento max: 204 hPa



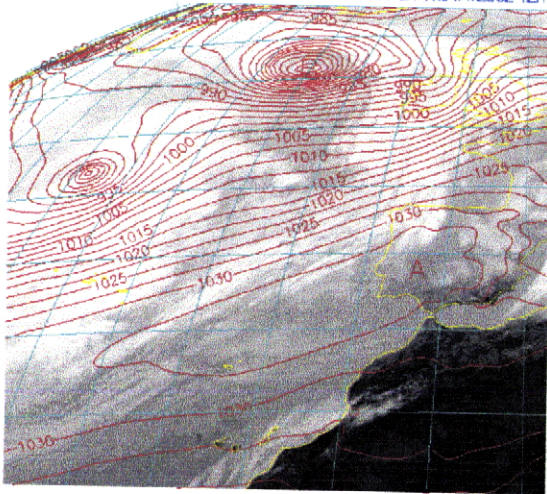
3b)

FIB ms6 31/1/102 0 00, S/c MSL 30/1/102 12h fc+12 vl 31/1/2002 0h



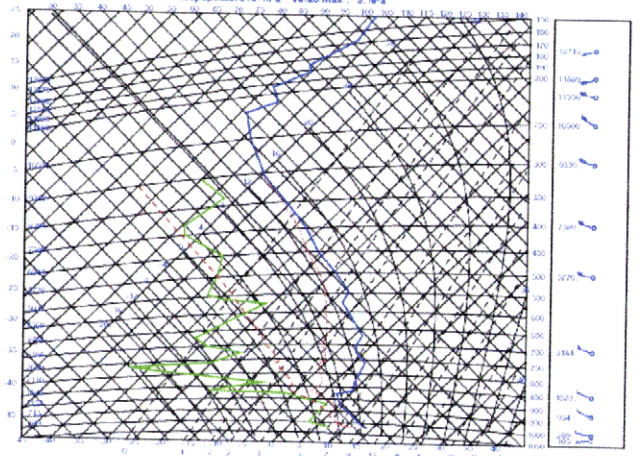
3a)

FIB ms6 31/1/102 12:00, Sic MSL 30/1/102 12h tc t+24 vl:31/1/2002 12h



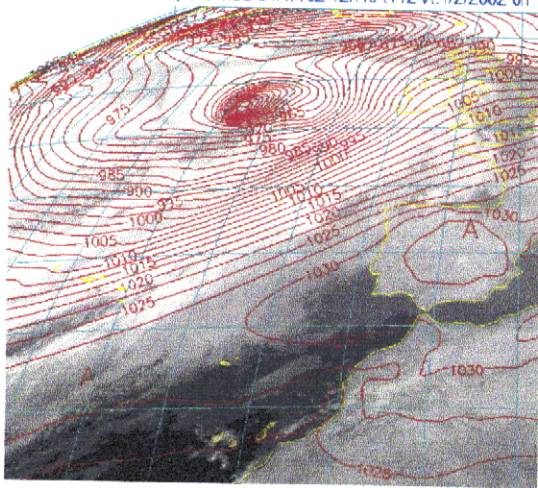
4a)

80579 LEBDA 20620131 / 12TUC
 Coordenada: 39.430 N 7W Altitude: 105 m
 CAPE: 14 J/kg CIN: 0 J/kg LI: 7.3 C Niv+vel: 1022 hPa TPW: 0.8 mm (at+ 381 hPa)
 Tropopausa: 218 hPa Vento max.: 5 m/s



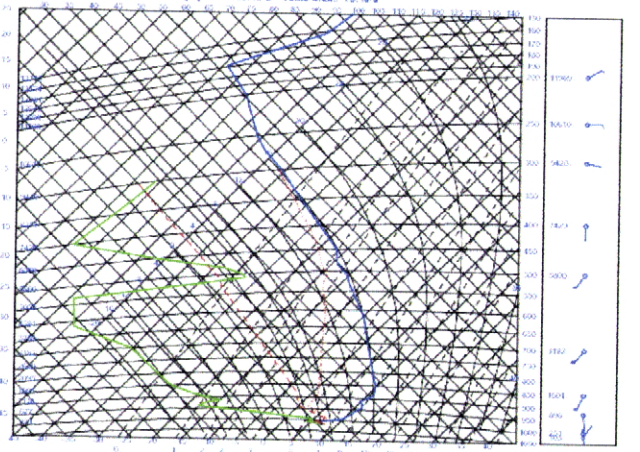
4b)

FIB ms6 1/2/102 0:00, Sic MSL 31/1/102 12h tc t+12 vl:1/2/2002 0h



5a)

84579 LEBDA 20620281 / 12TUC
 Coordenada: 38.45N 9 W Altitude: 105 m
 CAPE: 11 J/kg CIN: 1 J/kg LI: 15.3 C Niv+vel: 1022 hPa TPW: 4.6 mm (at+ 308 hPa)
 Tropopausa: 190 hPa Vento max.: 75 m/s



5b)

ANEXO II.A³

[Período 02/03/2002 - 07/03/2002]

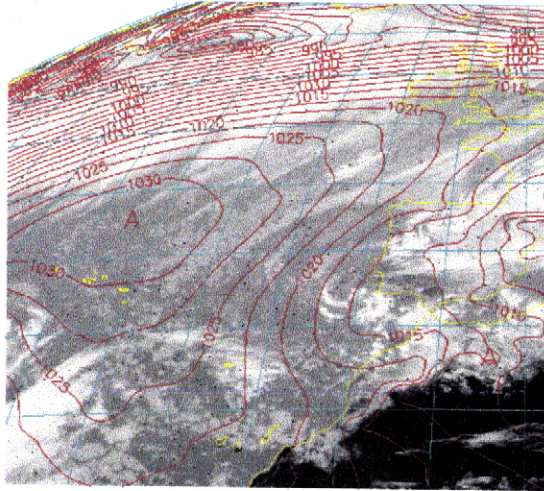
Imagem satélite da banda IV composta com pressão atmosférica N.M.M.

[Figuras 1a, 2a, 3a, 4a]

Tefrigrama correspondente à data da imagem composta

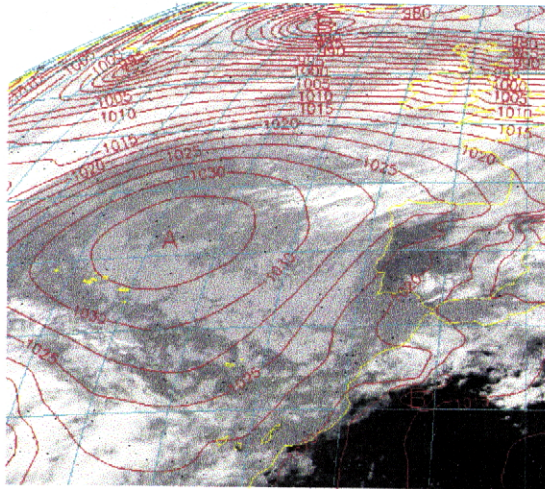
[Figuras 1b, 2b, 4b]

FIB ms6 5/3/102 12:00, Sic MSL 4/3/102 12h fc t+24 vt:5/3/2002 12h



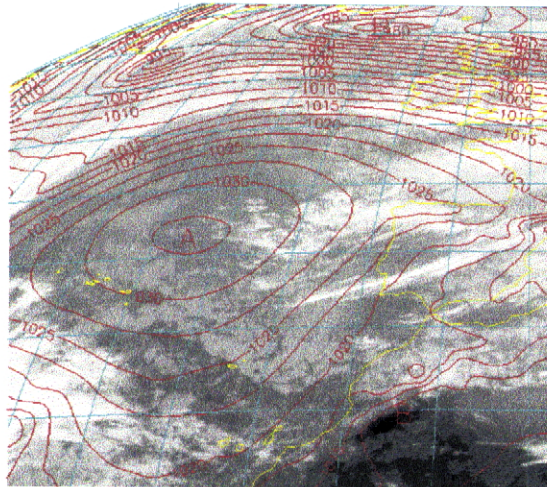
1a)

FIB ms6 6/3/102 12:00, Sic MSL 5/3/102 12h fc t+24 vt:6/3/2002 12h



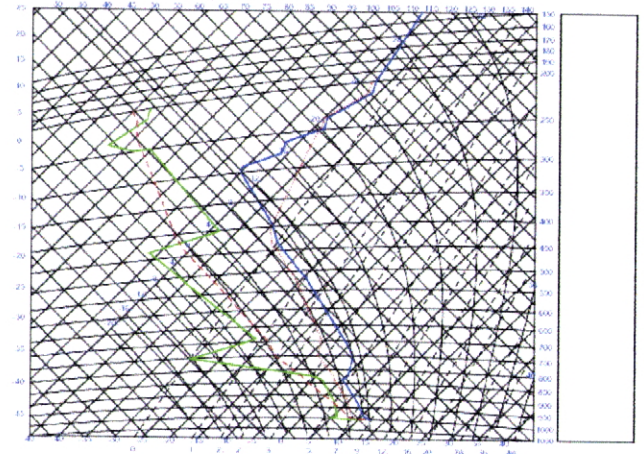
2a)

FIB ms6 6/3/102 18:00, Sic MSL 5/3/102 12h fc t+30 vt:6/3/2002 18h



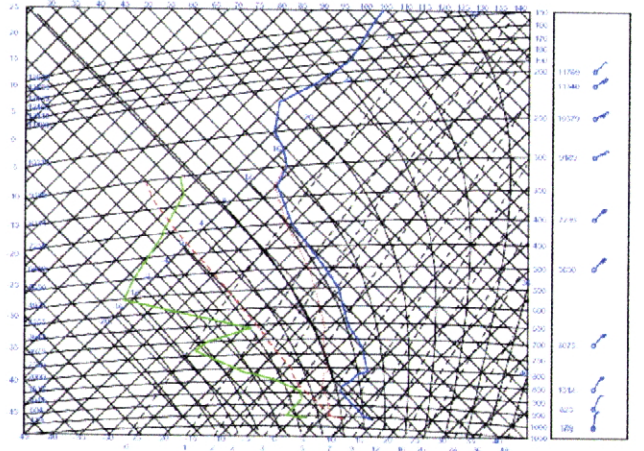
3a)

08579 LISBOA 20920305 12TUC
 Coordenada: 38 45N 9 7W Altitude: 105 m
 CAPE: 474 J/kg CIN: 0 J/kg LI: -2.8 C Niv-niv: 1302 hPa TPW: 113 mm (at 200 hPa)
 Tropopausa: 202 hPa Vento max: 1111 hPa



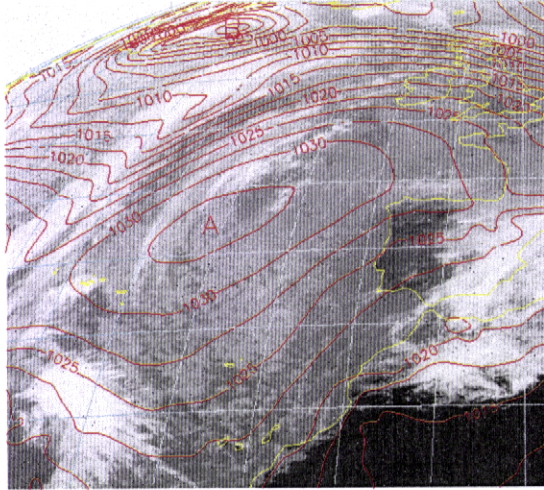
1b)

08579 LISBOA 20920306 12TUC
 Coordenada: 38 45N 9 7W Altitude: 105 m
 CAPE: 1111 J/kg CIN: 1111 J/kg LI: 8.1 C Niv-niv: 1111 hPa TPW: 77 mm (at 300 hPa)
 Tropopausa: 215 hPa Vento max: 223 hPa



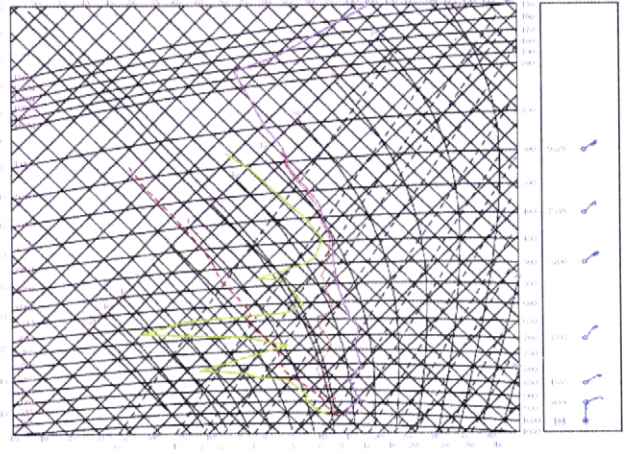
2b)

FIB ms6 7/3/02 12 00, Sic MSL 6/3/02 12h fc t-24 vt:7/3/2002 12h



4a)

81575 LQSDA 20020707 10TUC
Coordenada: 18 45 S 9 15 W Altitud: 105 m
CAPE: 2.2 J/kg QN: 1.1 g J 100 C Nuv: 1001 mPa TPOV: 12.9 min late 280 mPa
Tropopausa: 101 mPa MSL: 105 m



4b)

ANEXO II.A⁴

[Período 19/03/2002 - 26/03/2002]

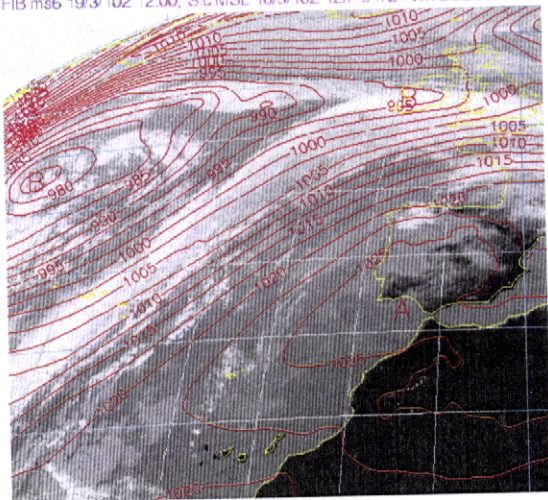
Imagem satélite da banda IV composta com pressão atmosférica N.M.M.

[Figuras 1a, 2a, 3a, 4a, 5a]

Tefrigrama correspondente à data da imagem composta

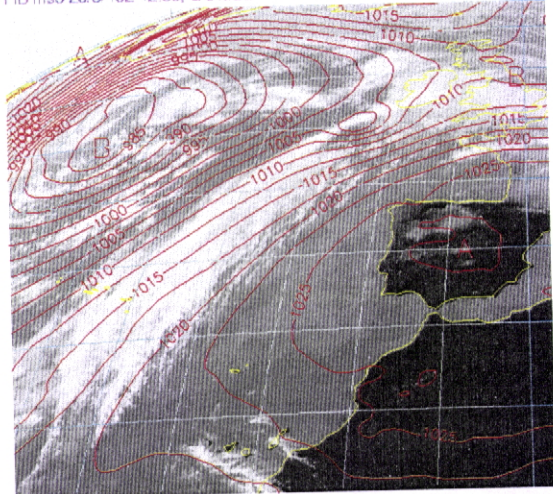
[Figuras 2b, 3b, 4b, 5b]

FIB ms6 19/3/102 12:00, S/c MSL 18/3/102 12h fo +24 vi 19/3/2002 12h



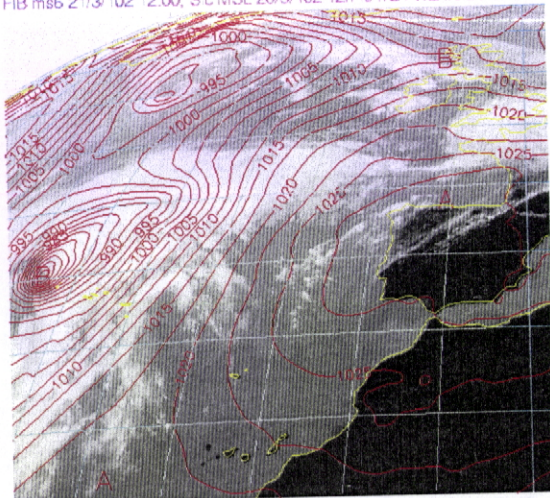
1a)

FIB ms6 20/3/102 12:00, S/c MSL 19/3/102 12h fo +24 vi 20/3/2002 12h



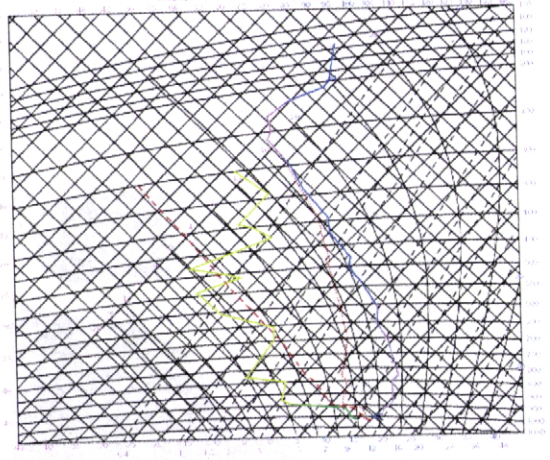
2a)

FIB ms6 21/3/102 12:00, S/c MSL 20/3/102 12h fo +24 vi 21/3/2002 12h



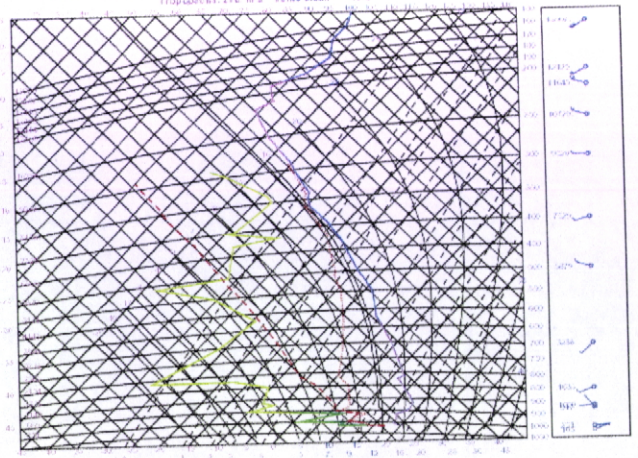
3a)

DES79 138.07, 2102321:121UC
 Coordenada: 28.45N 3.7W Altitude: 185 m
 CAPE: **** J/kg CN: **** J/kg LL: 6.8 - No: **** hPa TPO: 12.0 mm (sto 201 hPa)
 Frostdew: 2.16 hPa Vento max: **** hPa



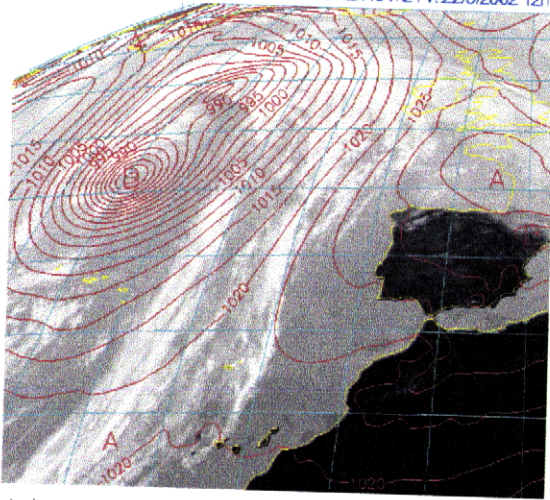
2b)

DES79 138.07, 2102321:121UC
 Coordenada: 28.45N 3.7W Altitude: 185 m
 CAPE: **** J/kg CN: **** J/kg LL: 2.8 - No: **** hPa TPO: 8.0 mm (sto 218 hPa)
 Frostdew: 2.16 hPa Vento max: **** hPa



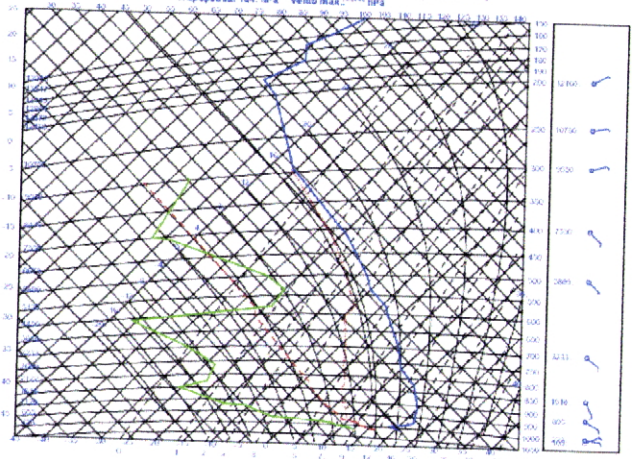
3b)

FIB ms6 22/3/102 12:00, Sic MSL 21/3/102 12h fc 1-24 vl.22/3/2002 12h



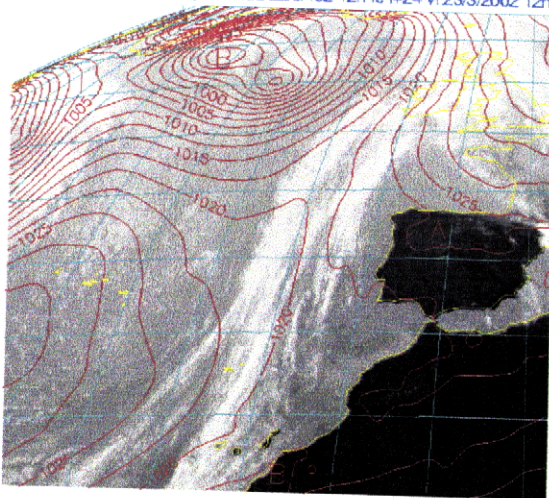
4a)

83579 LEBDA 20020322 / 12 UTC
 Coordenada: 39.45N 9.7W Altitude: 165 m
 CAPE: Jkg CIL: Jkg L: 3.7 C: Niv rima: hPa TPW: 7.9 mm (ale 297 hPa)
 Tropopausa: 161 hPa Vento max: hPa



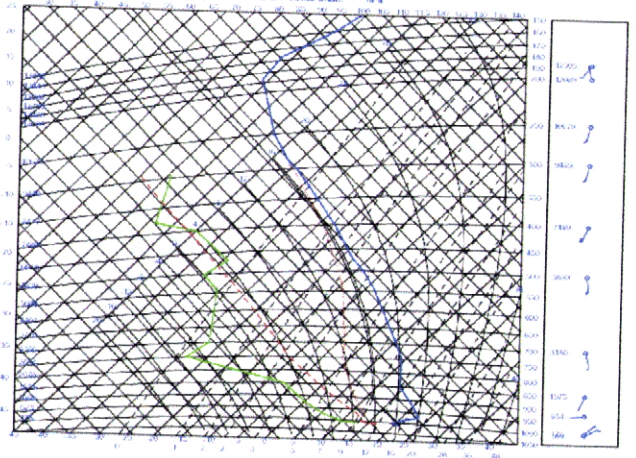
4b)

FIB ms6 23/3/102 12:00, Sic MSL 22/3/102 12h fc 1-24 vl.23/3/2002 12h



5)

83579 LEBDA 20020323 / 12 UTC
 Coordenada: 39.45N 9.7W Altitude: 165 m
 CAPE: Jkg CIL: Jkg L: 2.6 C: Niv rima: hPa TPW: 10.8 mm (ale 292 hPa)
 Tropopausa: 197 hPa Vento max: hPa



5b)

ANEXO II.A⁵

[Período 20/04/2002 - 25/04/2002]

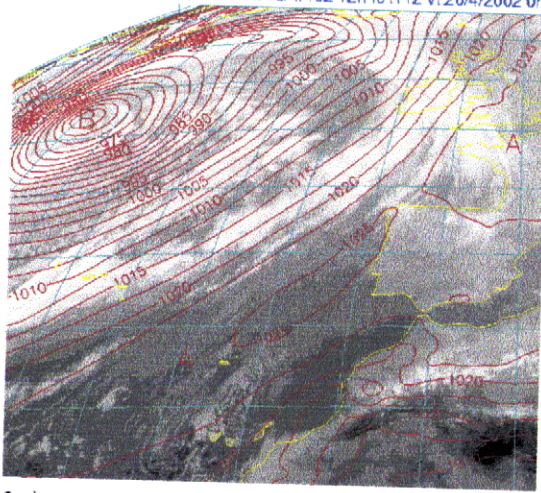
Imagem satélite da banda IV composta com pressão atmosférica N.M.M.

[Figuras 1a, 2a, 3a, 4a, 5a, 6a, 7a, 8a, 9a, 10a]

Tefrigrama correspondente à data da imagem composta

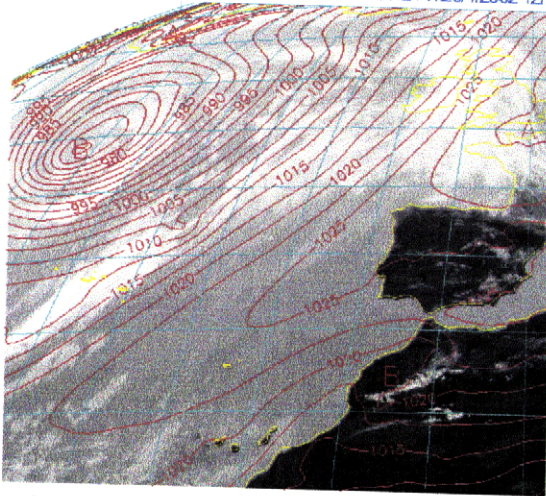
[Figuras 2b, 3b, 4b, 5b, 6b, 7b, 8b,9b,10b]

FIB ms6 20/4/102 0.00, Sic MSL 19/4/102 12h lc t+12 vt 20/4/2002 0h



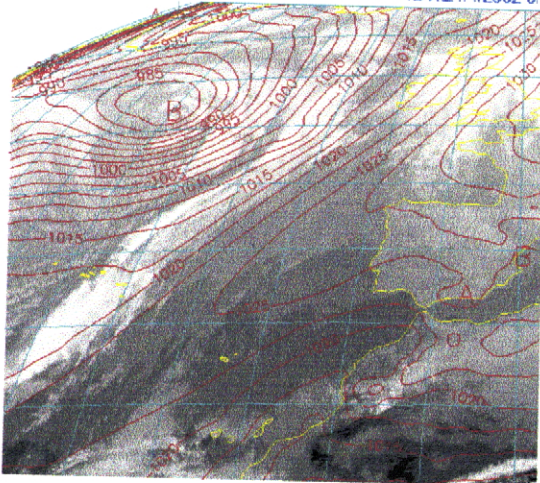
1a)

FIB ms6 20/4/102 12:00, Sic MSL 19/4/102 12h lc t+24 vt 20/4/2002 12h

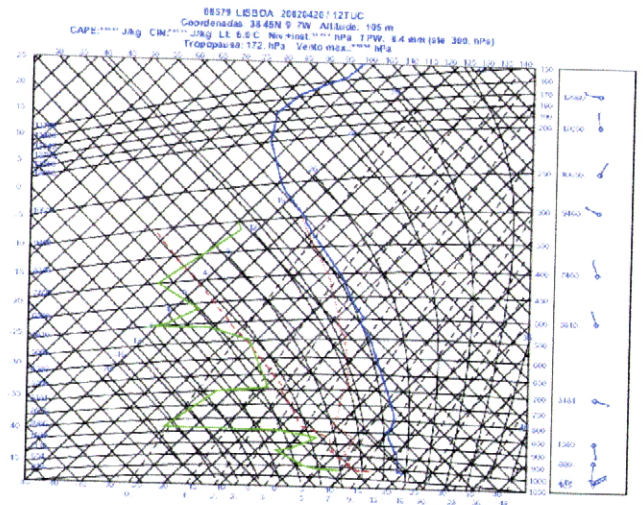


2a)

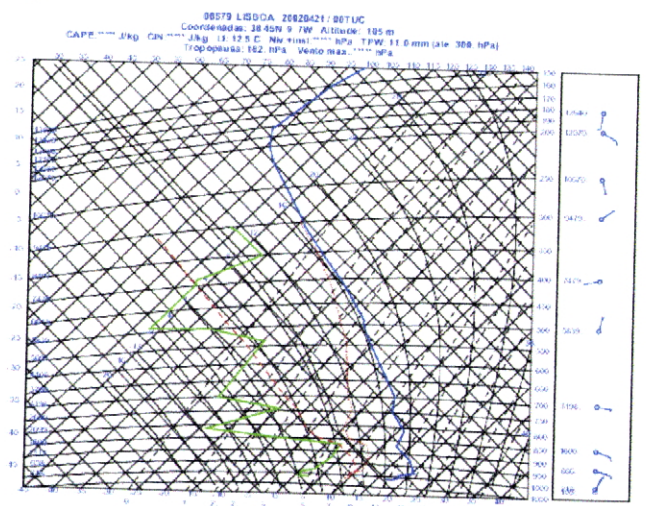
FIB ms6 21/4/102 0.00, Sic MSL 20/4/102 12h lc t+12 vt 21/4/2002 0h



3a)

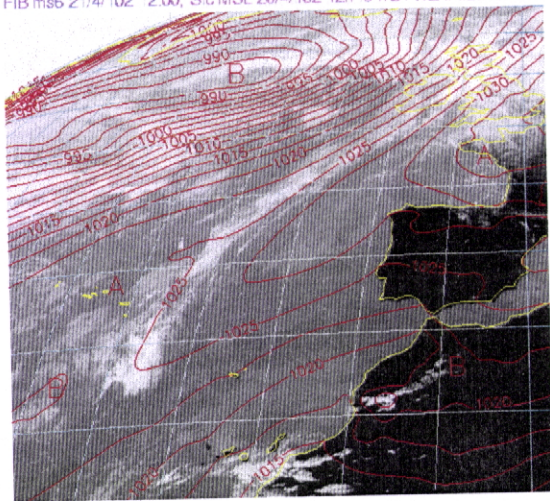


2b)



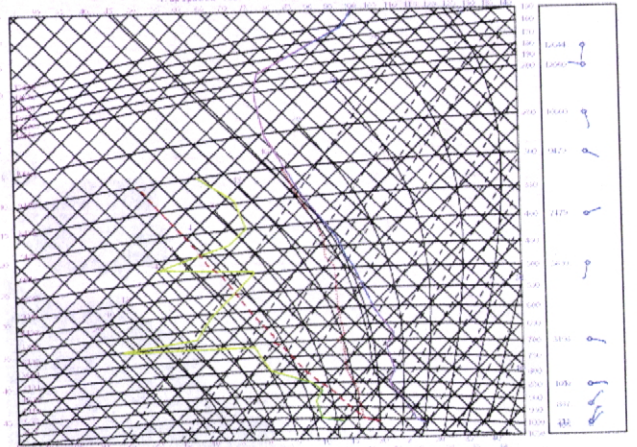
3b)

FIB ms6 21/4/102 *2.00, Sic MSL 20/4/102 12h fc +24 vi 21/4/2002 12h



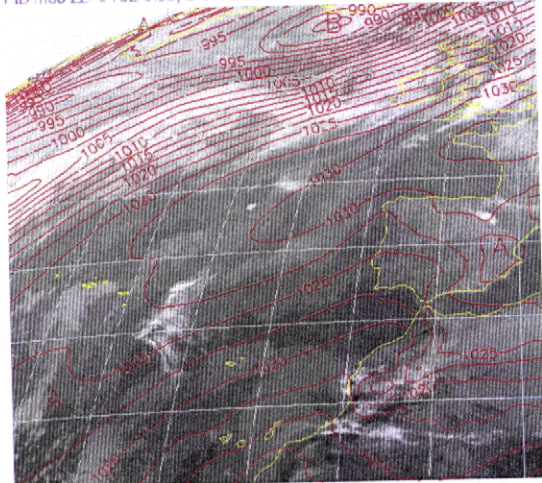
4a)

88579 LISBOA 2001942112TUC
 Coordenada: 38.45N 9.7W Altitude: 105 m
 CAPE:*** Jkg CIN:*** Jkg LL: 1.0 hPa -101.*** hPa TPW: 12.3 mm (ate 100 hPa)
 Tropopausa 102.0Pa Vento max:*** m/s



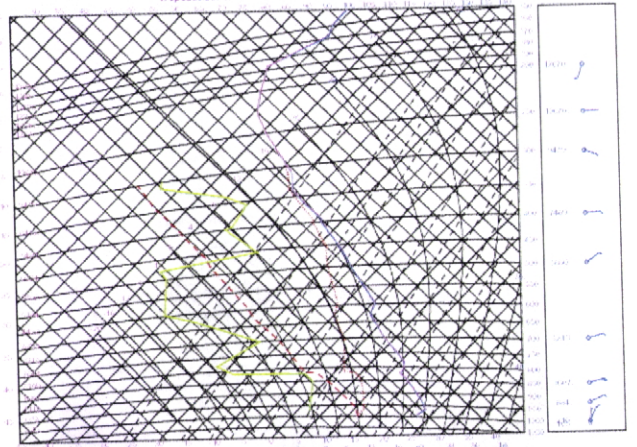
4b)

FIB ms6 22/4/102 0.00, Sic MSL 21/4/102 12h fc +12 vi 22/4/2002 0h



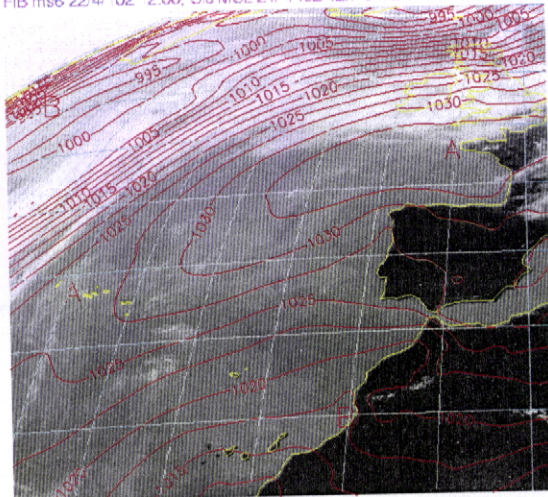
5a)

30579 LISBOA 2001942100TUC
 Coordenada: 38.45N 9.7W Altitude: 105 m
 CAPE:*** Jkg CIN:*** Jkg LL: 1.0 hPa -101.*** hPa TPW: 19.1 mm (ate 300 hPa)
 Tropopausa 117.0Pa Vento max:*** m/s



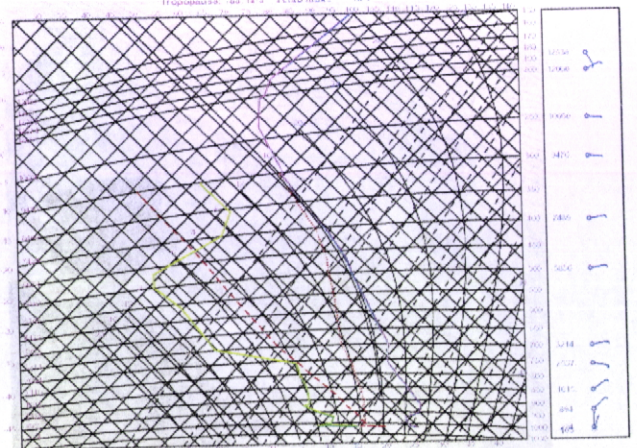
5b)

FIB ms6 22/4/102 12.00, Sic MSL 21/4/102 12h fc +24 vi 22/4/2002 12h



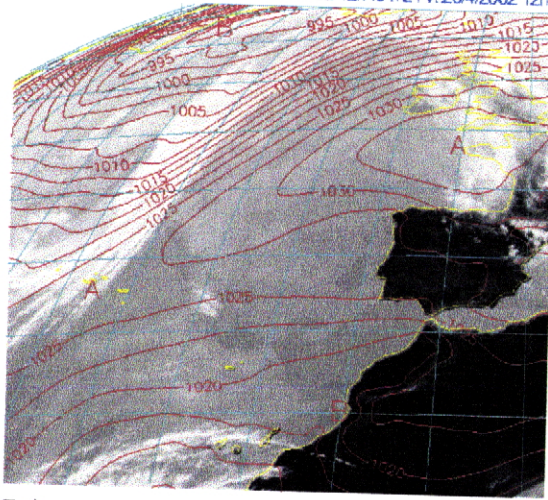
6a)

88579 LISBOA 2001942112TUC
 Coordenada: 38.45N 9.7W Altitude: 105 m
 CAPE:*** Jkg CIN:*** Jkg LL: 0.4 hPa -101.*** hPa TPW: 12.1 mm (ate 300 hPa)
 Tropopausa: 102.0Pa Vento max:*** m/s



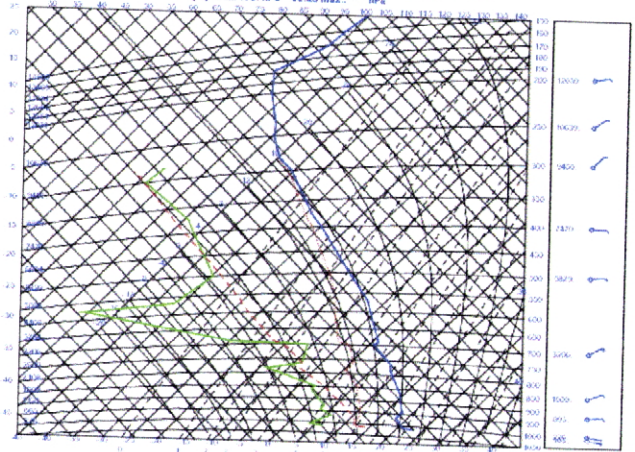
6b)

FIB ms6 23/4/102 12:00, Sic MSL 22/4/102 12h lc 1-24 vl 23/4/2002 12h



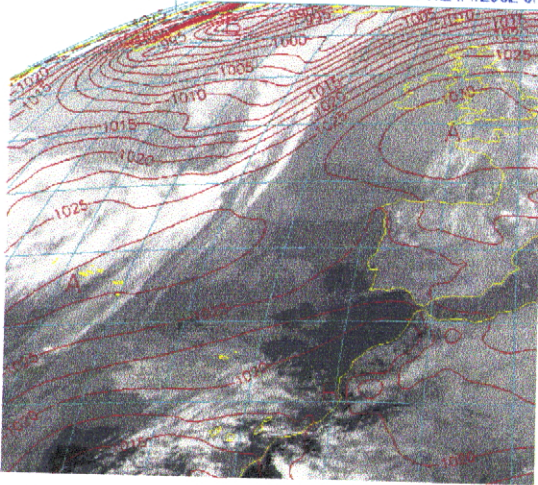
7a)

88579 LISBOA 20020423 12TUC
 Coordenadas: 38.45N 9.7W Altitude: 185 m
 CAPE: 11.0 J/kg CIN: 11.0 J/kg LI: 4.7 C Mix: 1000 hPa TPOV: 13.3 mm (ate 200 hPa)
 Tropopausa: 178 hPa Vento max: 11 m/s



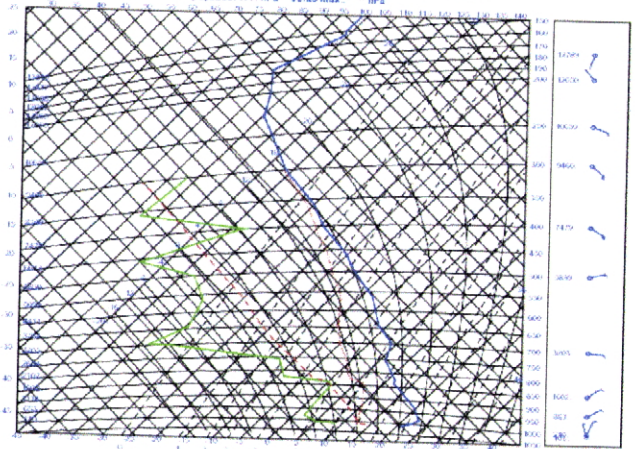
7b)

FIB ms6 24/4/102 0:00, Sic MSL 23/4/102 12h lc 1-12 vl 24/4/2002 0h



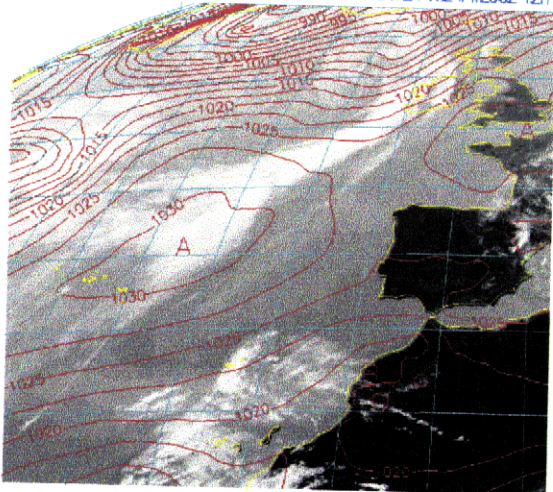
8a)

88579 LISBOA 20020424 00TUC
 Coordenadas: 38.45N 9.7W Altitude: 185 m
 CAPE: 19.5 J/kg CIN: 13.9 J/kg LI: 4.8 C Mix: 1000 hPa TPOV: 12.2 mm (ate 300 hPa)
 Tropopausa: 177 hPa Vento max: 11 m/s



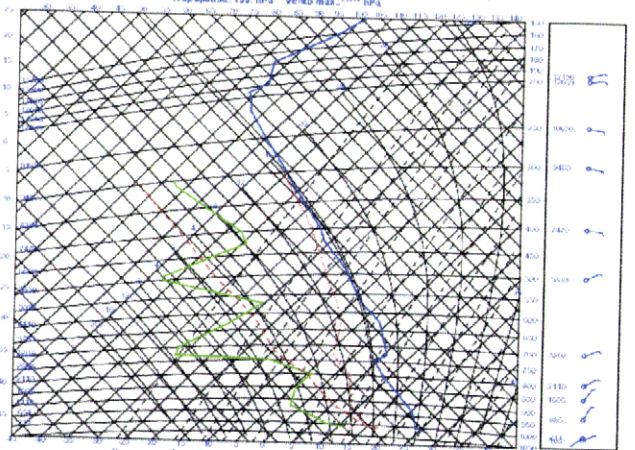
8b)

FIB ms6 24/4/102 12:00, Sic MSL 23/4/102 12h lc 1-24 vl 24/4/2002 12h



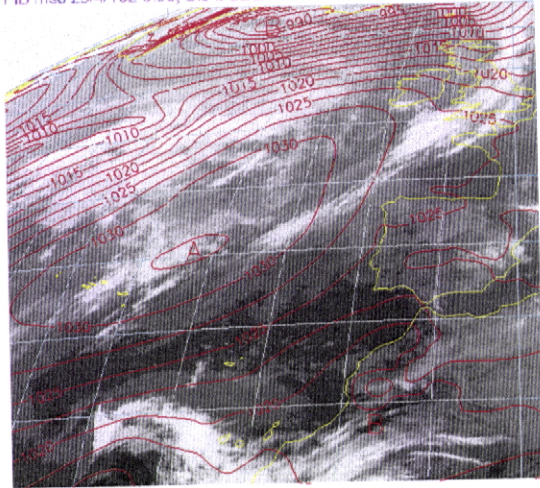
9a)

88579 LISBOA 20020424 12TUC
 Coordenadas: 38.45N 9.7W Altitude: 185 m
 CAPE: 19.5 J/kg CIN: 13.9 J/kg LI: 4.8 C Mix: 1000 hPa TPOV: 12.2 mm (ate 300 hPa)
 Tropopausa: 178 hPa Vento max: 11 m/s



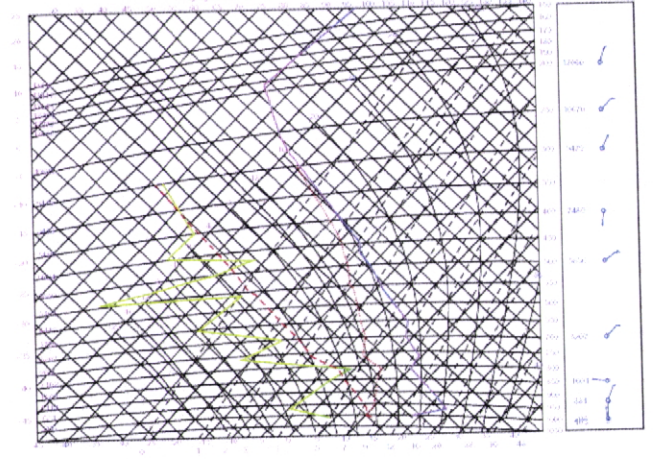
9b)

FIB ms6 25/4/102 0 00, Sic MSL 24/4/102 12h fc t+12 vl 25/4/2002 0h



10a)

08379 LIBROA 20020425/08TUC
 Coordenada: 38.436 9 19W, Altitude: 185m
 CAPE:*** J/kg CIN:*** J/kg LI: 97.6 N/micra*** hPa TPW: 10.3 mm (alt 307 hPa)
 Tropopausa: 793 hPa Verko max:*** hPa



10b)

ANEXO II.A⁶

[Período 10/05/2002 - 12/05/2002]

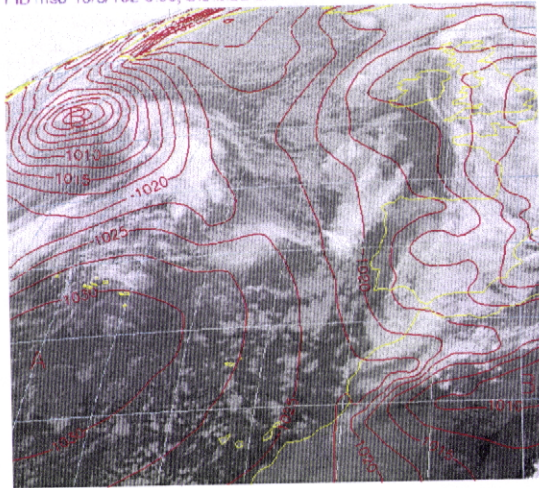
Imagem satélite da banda IV composta com pressão atmosférica N.M.M.

[Figuras 1a, 2a, 3a, 4a, 5a, 6a]

Tefrigrama correspondente à data da imagem composta

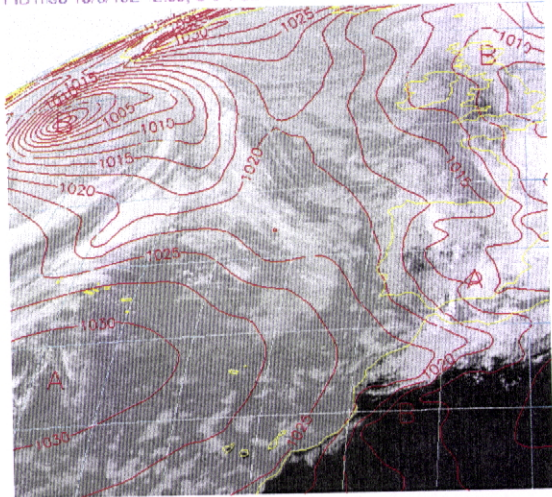
[Figuras 1b, 2b, 3b, 4b, 5b, 6b]

FIB ms6 10/5/102 0 00, Sic MSL 9/5/102 12h fc t+12 vl 10/5/2002 0h



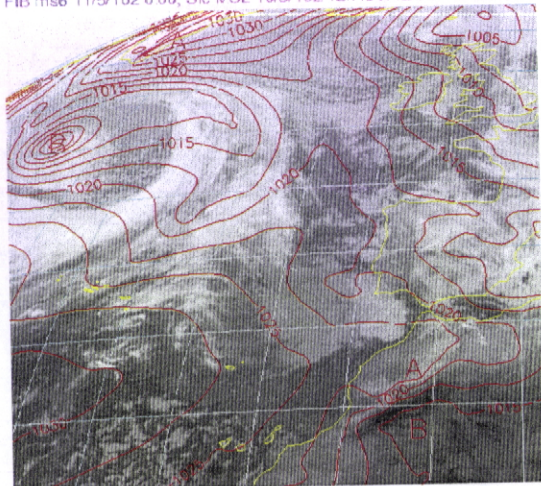
1a)

FIB ms6 10/5/102 *2:00, Sic VSL 9/5/102 12h fc t+24 vl *0/5/2002 12h



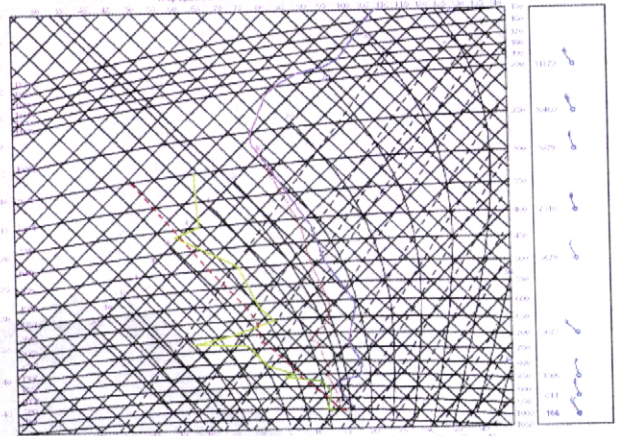
2a)

FIB ms6 11/5/102 0 00, Sic MSL 10/5/102 12h fc t+12 vl 11/5/2002 0h



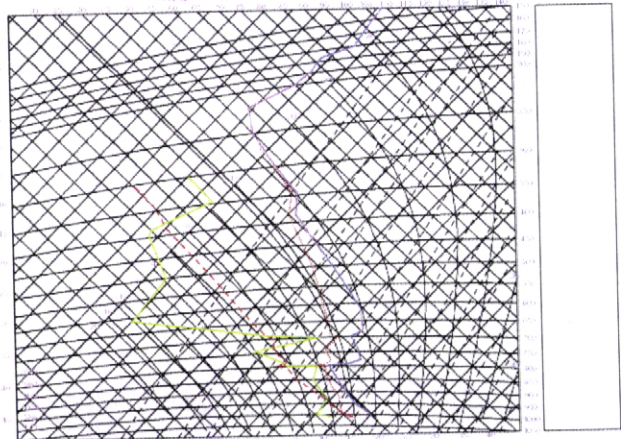
3a)

01079 LRBDA 20020519 00TUC
 Coordenada: 39 43N 9 °W Altitude: 185 m
 CAPE: 0 J/kg CIN: 1 J/kg L: 6.9 C No: + rel: 0 Pa TPW: 13.3 mm (ata 100 hPa)
 Tropopausa: 267 hPa Verhoefmax: 0 hPa



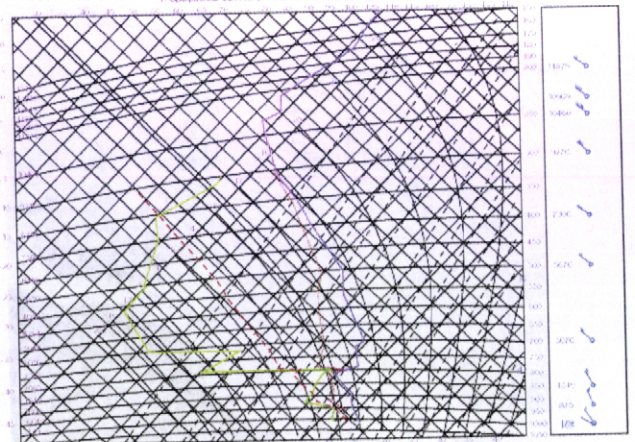
1b)

01079 LRBDA 20020519 12TUC
 Coordenada: 36 45N 9 °W Altitude: 185 m
 CAPE: 58 J/kg CIN: 1 J/kg L: 5.9 C No: +rel:000 hPa TPW: 12.1 mm (ata 300 hPa)
 Tropopausa: 219 hPa Verhoefmax: 0 hPa



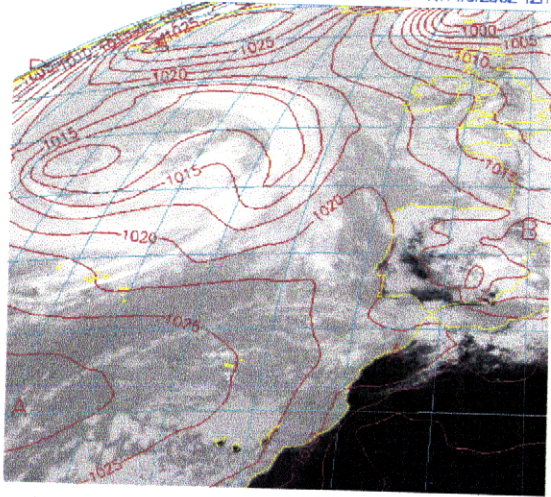
2b)

01079 LRBDA 20020519 00TUC
 Coordenada: 36 45N 9 °W Altitude: 185 m
 CAPE: 0 J/kg CIN: 1 J/kg L: 10.0 C No: +rel: 0 Pa TPW: 15.3 mm (ata 200 hPa)
 Tropopausa: 231 hPa Verhoefmax: 24 hPa



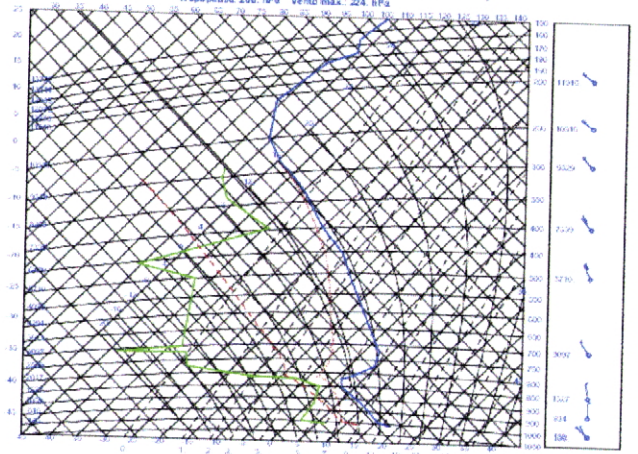
3b)

FIB ms6 11/5/102 12:00, Sic MSL 10/5/102 12h Ic t+24 vl:1 1/5/2002 12h



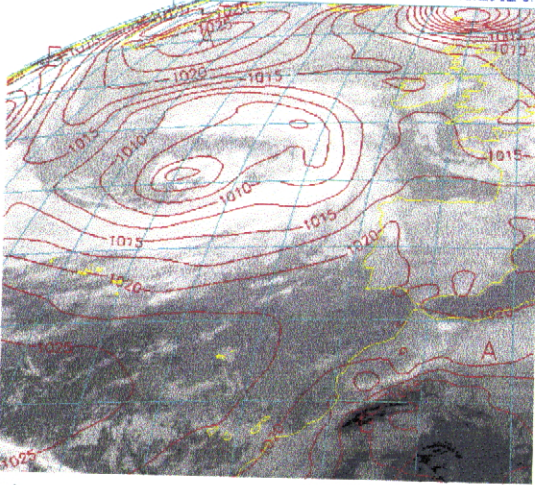
4a)

05579 L8BOA 20020511/12TUC
 Coordenadas: 38.45N 9.7W Altitude: 185 m
 CAPE: 21 J/kg CIN: 0 J/kg LI: 8.3 C Niv: -101.1999 hPa TPW: 9.7 mm (alt 287 hPa)
 Tropopausa: 206 hPa Vento max: 224 hPa



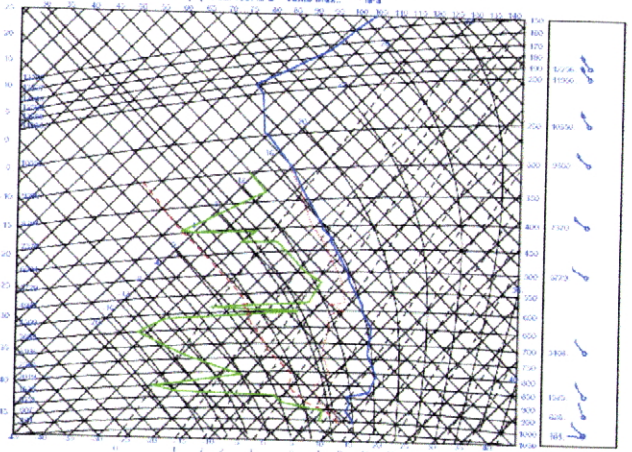
4b)

FIB ms6 12/5/102 0:00, Sic MSL 11/5/102 12h Ic t+12 vl:12/5/2002 0h



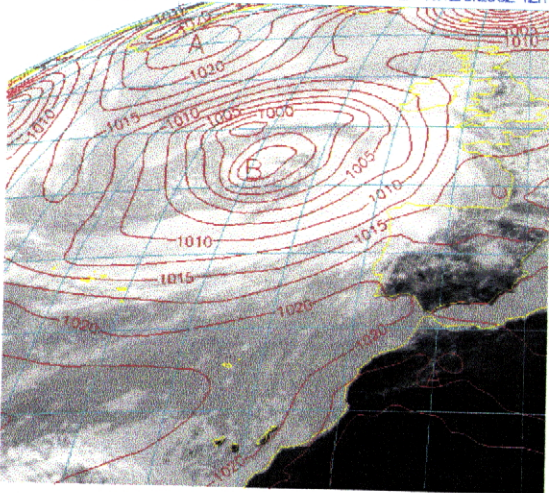
5)

05579 L8BOA 20020512/00TUC
 Coordenadas: 38.45N 9.7W Altitude: 185 m
 CAPE: 19 J/kg CIN: 0 J/kg LI: 11.8 C Niv: -101.1999 hPa TPW: 9.7 mm (alt 308 hPa)
 Tropopausa: 190 hPa Vento max: 190 hPa



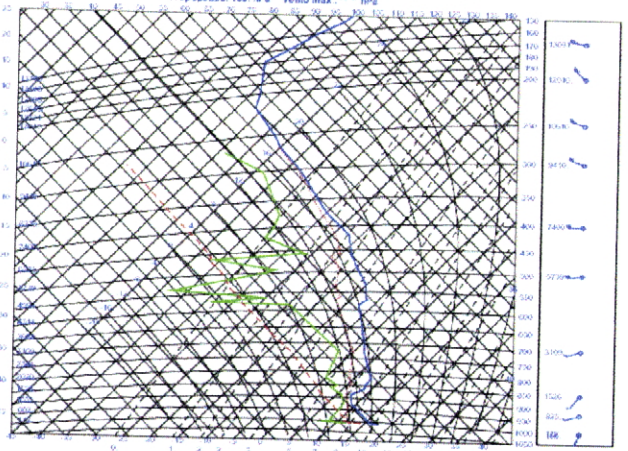
5b)

FIB ms6 12/5/102 12:00, Sic MSL 11/5/102 12h Ic t+24 vl:12/5/2002 12h



6)

05579 L8BOA 20020512/12TUC
 Coordenadas: 38.45N 9.7W Altitude: 185 m
 CAPE: 19 J/kg CIN: 0 J/kg LI: 8.3 C Niv: -101.1999 hPa TPW: 22.1 mm (alt 288 hPa)
 Tropopausa: 169 hPa Vento max: 190 hPa



6b)

ANEXO II.A⁷

[Período 15/07/2002 - 20/07/2002]

Imagem satélite da banda IV composta com pressão atmosférica N.M.M.

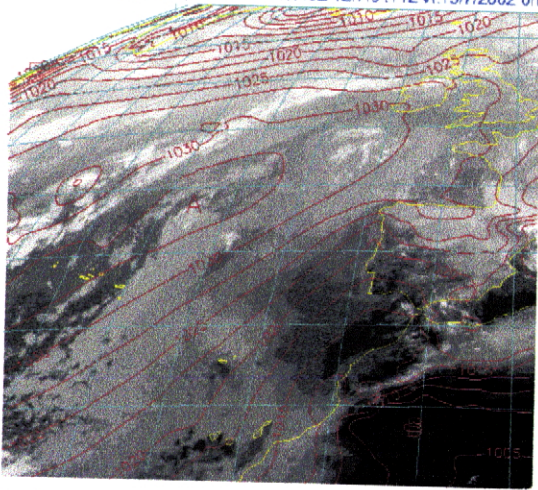
[Figuras 1a, 2a, 3a, 4a, 5a, 6a]

Tefrigrama correspondente à data da imagem composta

[Figuras 2b, 3b, 4b, 5b, 6b]

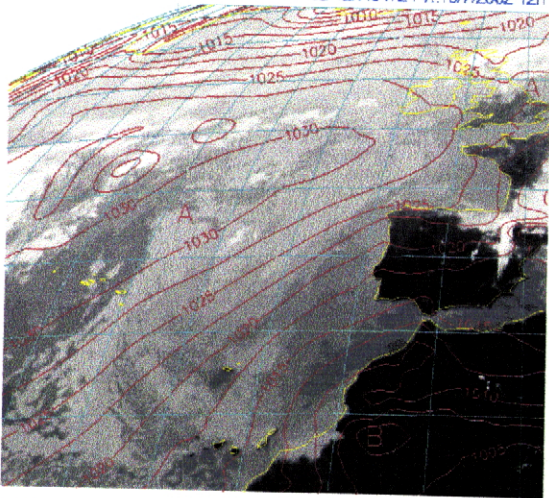


FIB ms6 15/7/102 0.00, Sic MSL 14/7/102 12h fc t+12 vl:15/7/2002 0h



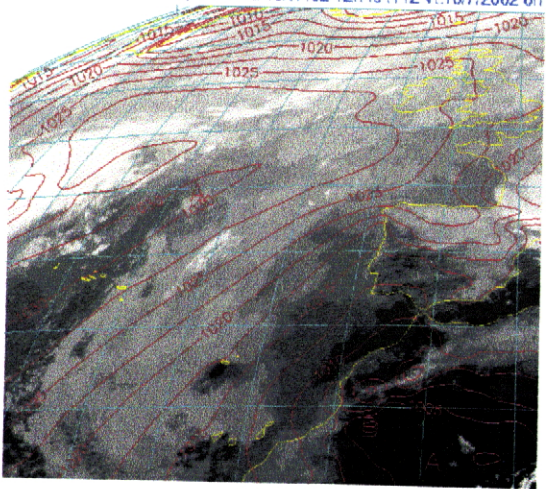
1a)

FIB ms6 15/7/102 12:00, Sic MSL 14/7/102 12h fc t+24 vl:15/7/2002 12h

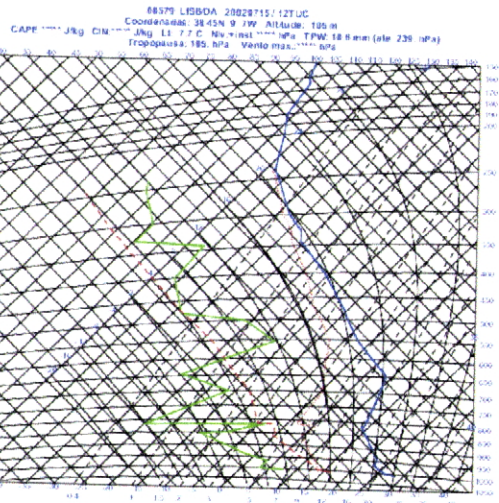


2a)

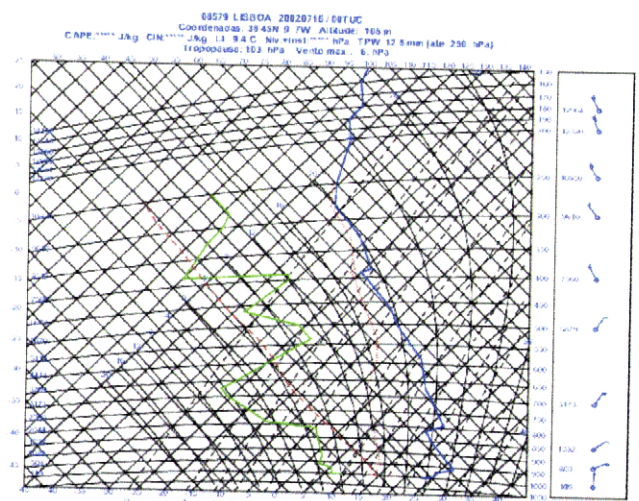
FIB ms6 16/7/102 0.00, Sic MSL 15/7/102 12h fc t+12 vl:16/7/2002 0h



3a)

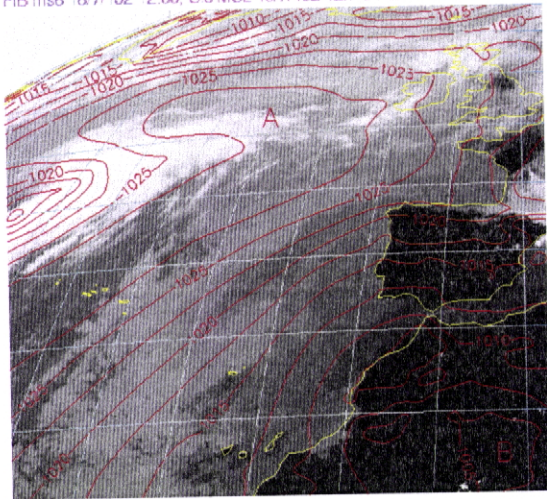


2b)



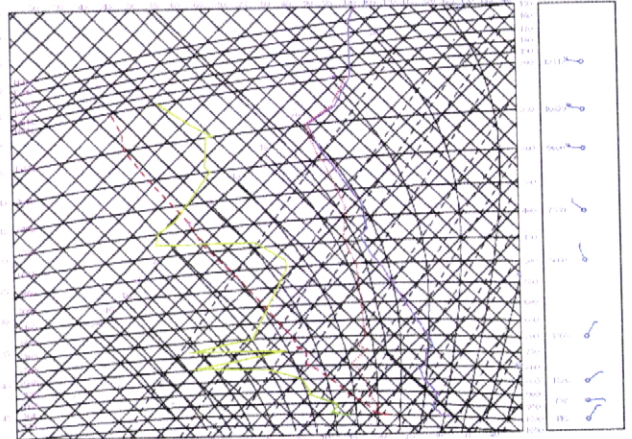
3b)

FIB ms6 16/7/02 *2:00, S/c MSL 15/7/02 12h to 14:24 vi 16/7/2002 12h



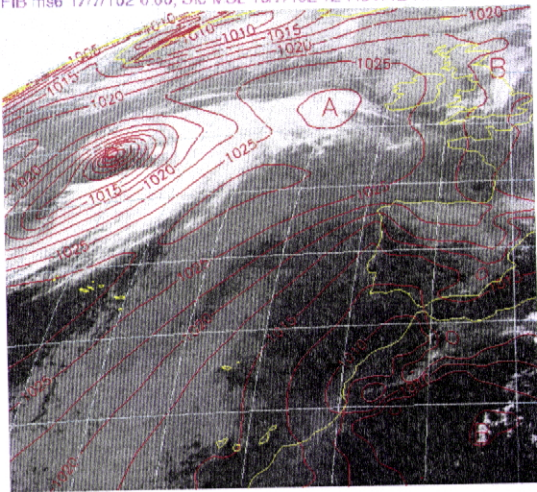
4a)

01673 LISBOA 20020716 12TUC
 Coordenadas: 39 45N 9 5W Altitude: 105 m
 CAP: 1000 hPa CIN: 1000 hPa T: 24.5 C U: 10.0 m/s V: 11.8 mm (até 205 hPa)
 Trovoadas: 245 hPa Vento max: 100 hPa



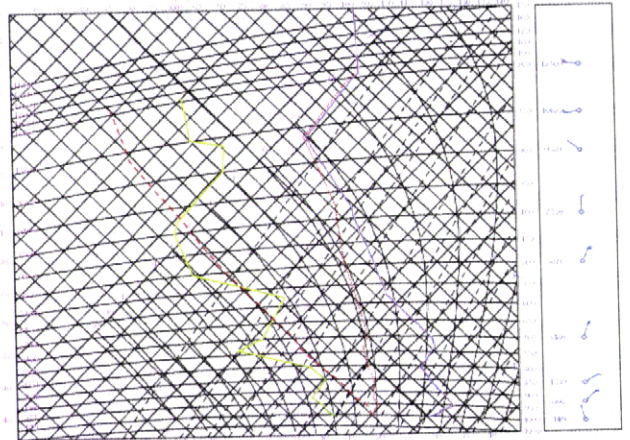
4b)

FIB ms6 17/7/02 0:00, S/c MSL 16/7/02 12h to 12:41 vi 17/7/2002 0h



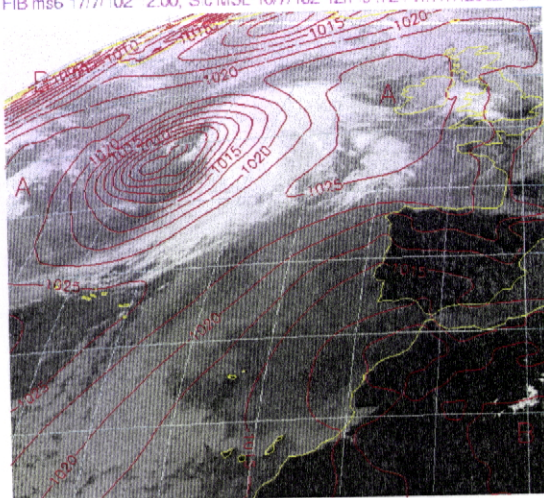
5a)

01673 LISBOA 20020717 00TUC
 Coordenadas: 39 45N 9 5W Altitude: 105 m
 CAP: 1000 hPa CIN: 1000 hPa T: 6.2 C U: 10.0 m/s V: 11.8 mm (até 155 hPa)
 Trovoadas: 203 hPa Vento max: 5.10 m/s



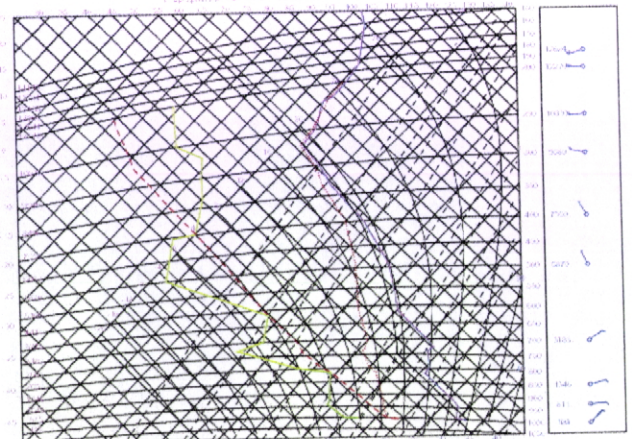
5b)

FIB ms6 17/7/02 *2:00, S/c MSL 16/7/02 12h to 14:24 vi 17/7/2002 12h



6a)

01673 LISBOA 20020717 12TUC
 Coordenadas: 39 45N 9 5W Altitude: 105 m
 CAP: 1000 hPa CIN: 1000 hPa T: 13.0 C U: 10.0 m/s V: 11.8 mm (até 205 hPa)
 Trovoadas: 191 hPa Vento max: 100 hPa



6b)

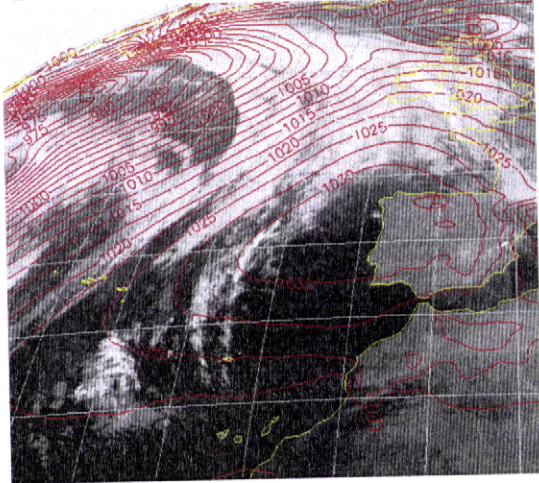
ANEXO II.A⁸

[Período 08/11/2002 - 11/11/2002]

Imagem satélite da banda IV composta com pressão atmosférica N.M.M.
[Figuras 1a, 2a, 3a, 4a, 5a, 6a, 7a, 8a]

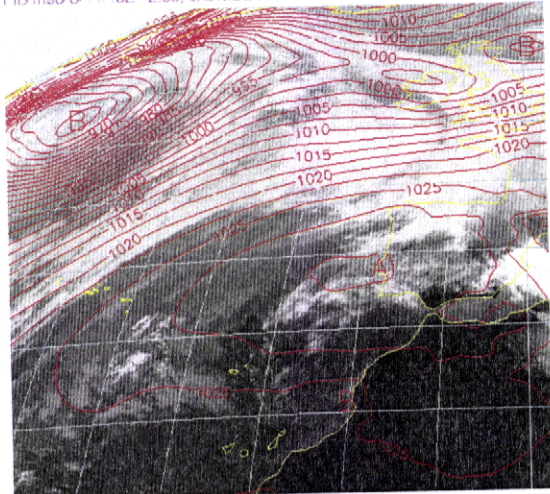
Tefrigrama correspondente à data da imagem composta
[Figuras 2b, 3b, 4b, 5b, 6b, 7b, 8b]

FIB ms6 8/11/102 0 00, Sic MSL 7/11/102 12h fc t+12 vl 8/11/2002 0h



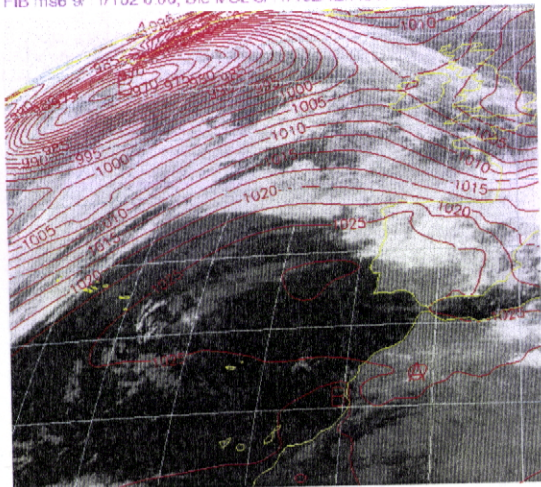
1a)

FIB ms6 8/11/102 *2:00, Sic MSL 7/11/102 12h fc t+24 vl 8/11/2002 12h



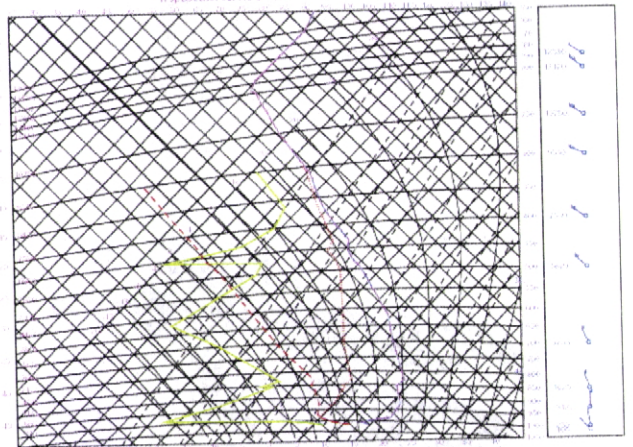
2a)

FIB ms6 9/11/102 0 00, Sic MSL 8/11/102 12h fc t+12 vl 9/11/2002 0h



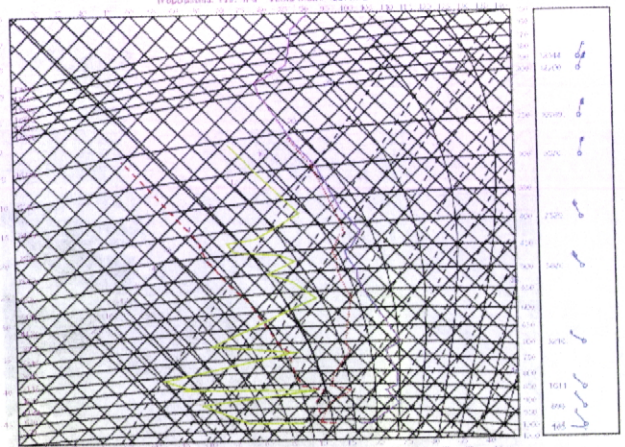
3a)

EST9 LEBDA 2002110812TUC
 Coordenada: 31.034 S 10.000 W Altitude: 103 m
 CAPE: 236 J/kg CIN: 236 J/kg LI: 12.9 C Mix: 1000 hPa TFW: 2.2 mm (a: 301 hPa)
 Temperatura: 19.7 hPa Ventos: 8.3 m/s



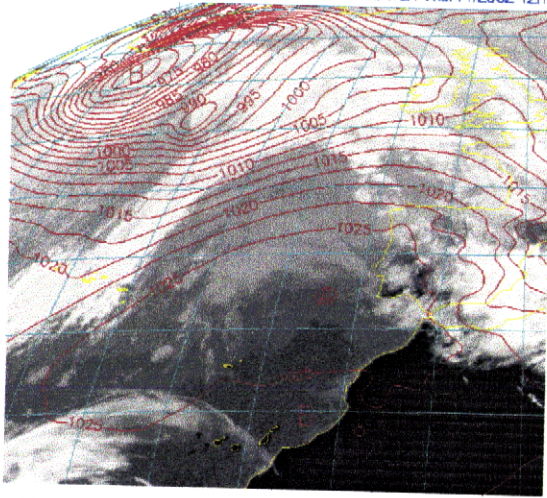
2b)

EST9 LEBDA 2002110910TUC
 Coordenada: 30.458 S 10.000 W Altitude: 103 m
 CAPE: 236 J/kg CIN: 236 J/kg LI: 15.4 C Mix: 1000 hPa TFW: 8.9 mm (a: 256 hPa)
 Temperatura: 19.7 hPa Ventos: 8.3 m/s



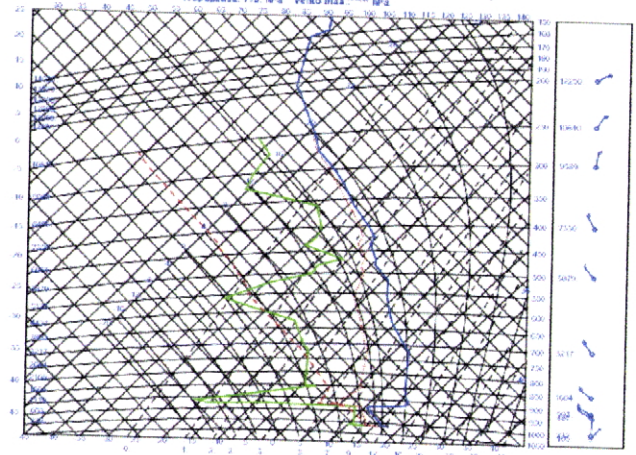
3b)

FIB ms6 9/11/102 12:00, Slc MSL 8/11/102 12h fc t-24 vt.9/11/2002 12h



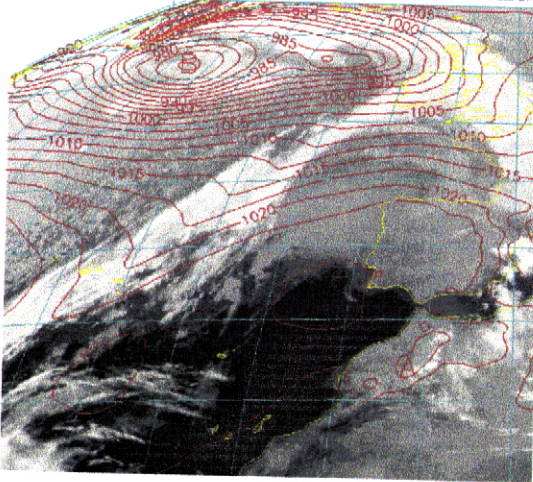
4a)

88579 LISBOA 20021109 12TJUC
 Coordenadas: 38 45N 9 7W Altitude: 105 m
 CAPE: 11.7 J/kg CIN: 0.2 J/kg LI: 8.5 C Nv: +161.1 mPa T'PW: 16.6 mm (ata 256 hPa)
 Tropopausa: 115 hPa Vento max: 11 m/s



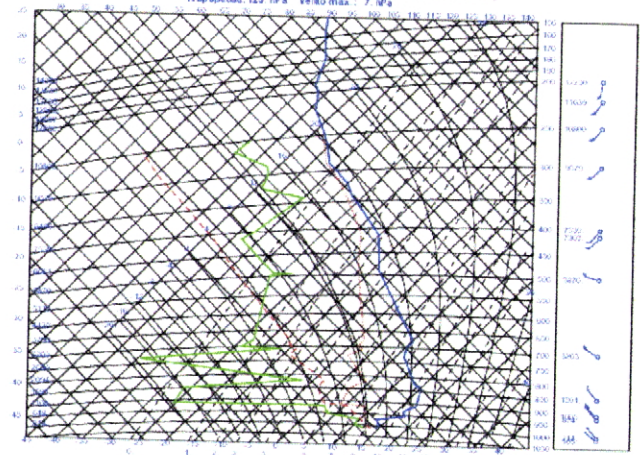
4b)

FIB ms6 10/11/102 0:00, Slc MSL 9/11/102 12h fc t-12 vt.10/11/2002 0h



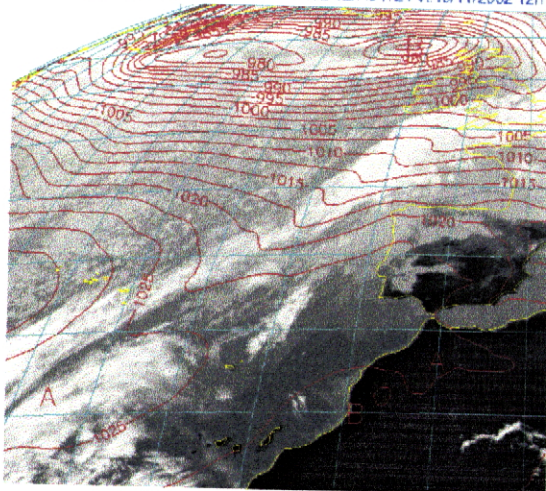
5a)

88579 LISBOA 20021110 00TJUC
 Coordenadas: 38 45N 9 7W Altitude: 105 m
 CAPE: 11.7 J/kg CIN: 0.2 J/kg LI: 9.3 C Nv: +161.1 mPa T'PW: 11.0 mm (ata 256 hPa)
 Tropopausa: 123 hPa Vento max: 7 m/s



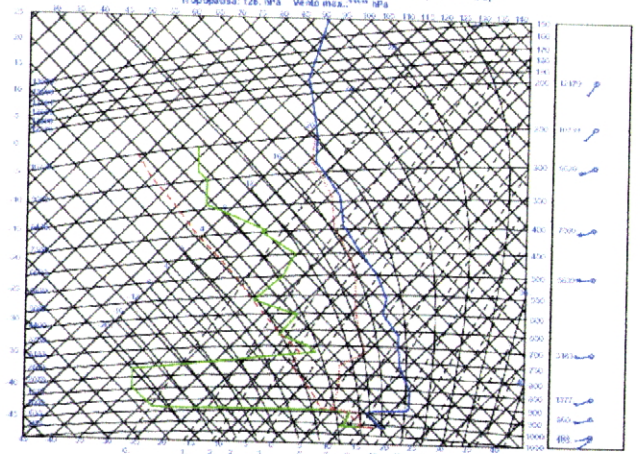
5b)

FIB ms6 10/11/102 12:00, Slc MSL 9/11/102 12h fc t-24 vt.10/11/2002 12h



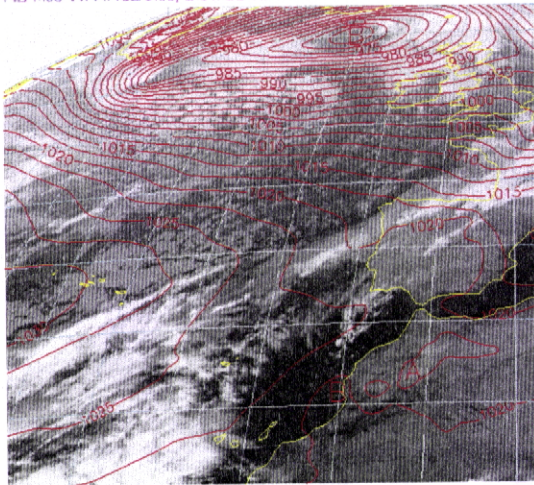
6a)

88579 LISBOA 20021110 12TJUC
 Coordenadas: 38 45N 9 7W Altitude: 105 m
 CAPE: 11.7 J/kg CIN: 0.2 J/kg LI: 7.1 C Nv: +161.1 mPa T'PW: 10.1 mm (ata 256 hPa)
 Tropopausa: 126 hPa Vento max: 11 m/s



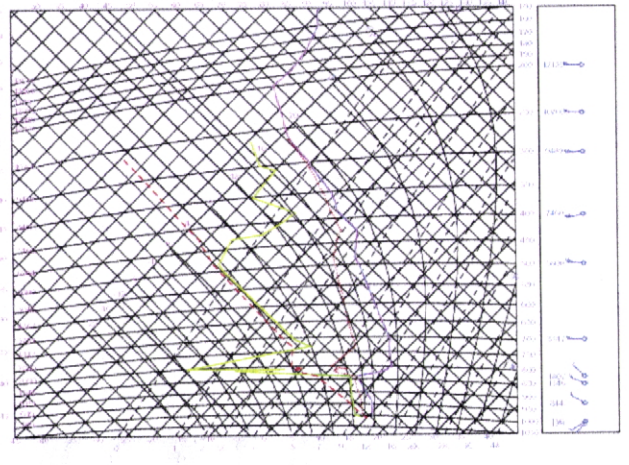
6b)

FIB ms6 11/11/102 0.00, S/c MSL 10/11/102 12h fo t+12 vl.11/11/2002 0h



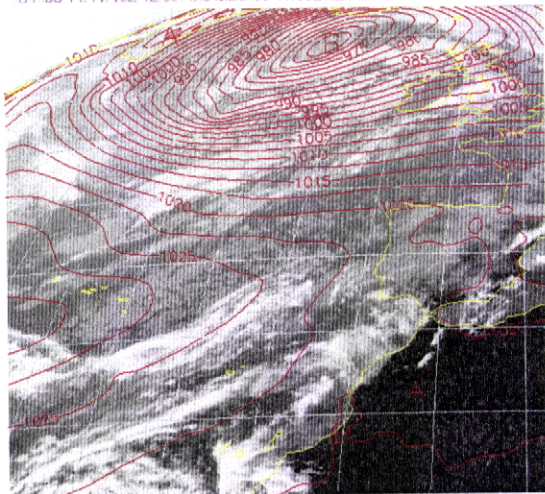
7a)

0879 LEBDA 102111103TUC
 Coordenada: 33.42N 5.7W, Altura: 185 m
 CAPE: 12.0kg CW: 47.0kg LI: 5.2 C. No: 101.003 hPa, TPW: 19.1 mm (iso 1Pa)
 Tropopausa: 280 hPa - 2046 m - 107



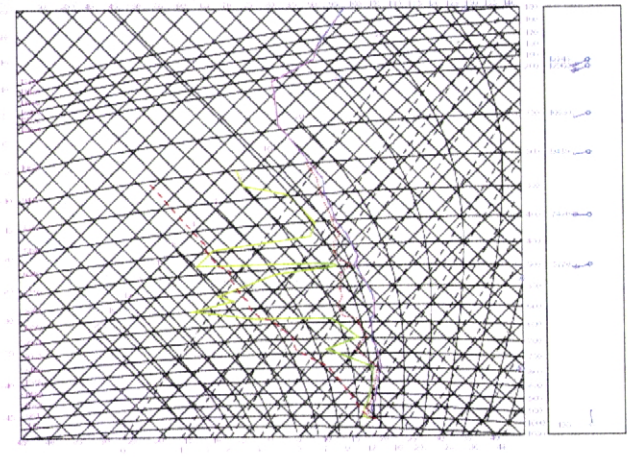
7b)

FIB ms6 11/11/102 12.00, S/c MSL 10/11/102 12h fo t+24 vl.11/11/2002 12h



8a)

0879 LEBDA 102111112TUC
 Coordenada: 33.42N 5.7W, Altura: 185 m
 CAPE: 4.0kg CW: 0.0kg LI: 2.1 C. No: 101.103 hPa, TPW: 27.4 mm (iso 1Pa)
 Tropopausa: 298 hPa - 2080 m - 107



8b)

ANEXO II.A⁹

[Período 21/11/2002 - 22/11/2002]

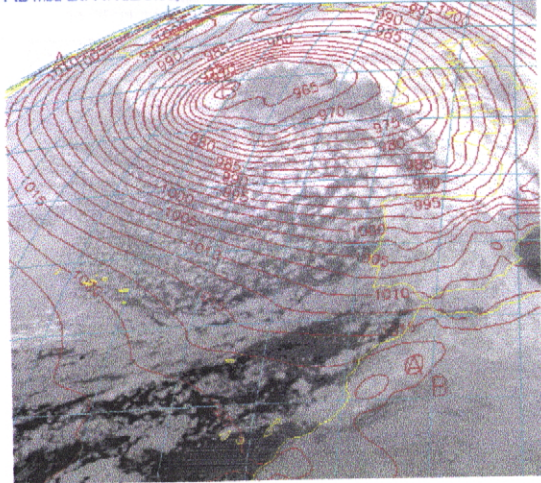
Imagem satélite da banda IV composta com pressão atmosférica N.M.M.

[Figuras 1a, 2a, 3a, 4a, 5a, 6a]

Tefrigrama correspondente à data da imagem composta

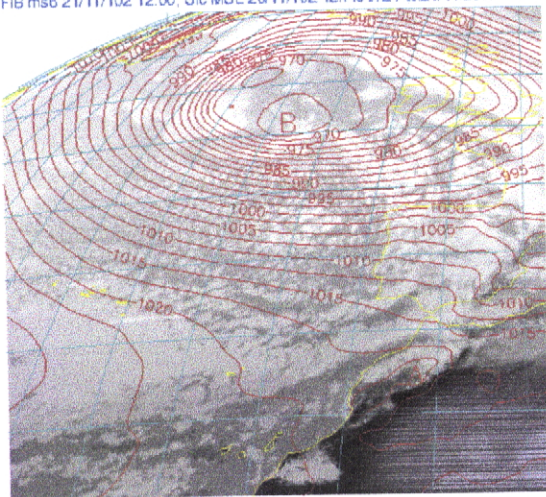
[Figuras 1b, 2b, 3b, 4b]

FIB ms6 21/11/102 0.00, Sic MSL 20/11/102 12h fc t+12 vt:21/11/2002 0h



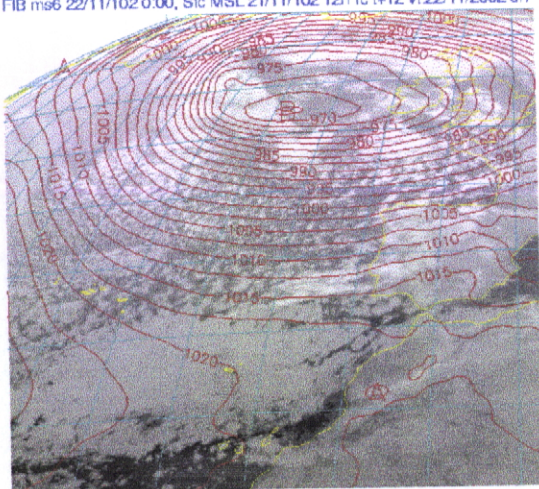
1a)

FIB ms6 21/11/102 12.00, Sic MSL 20/11/102 12h fc t+24 vt:21/11/2002 12h

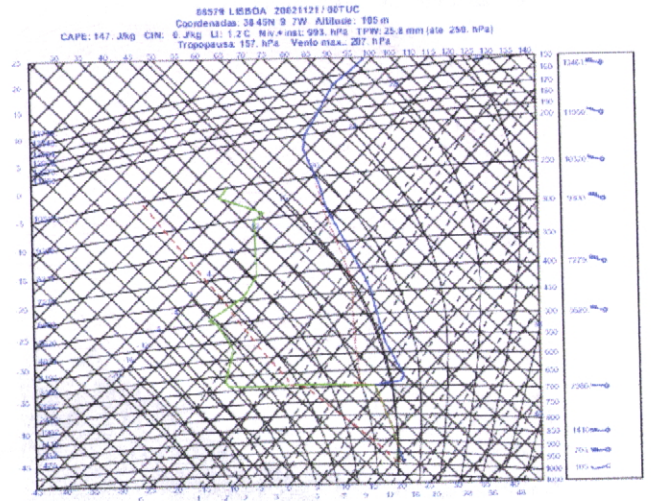


2a)

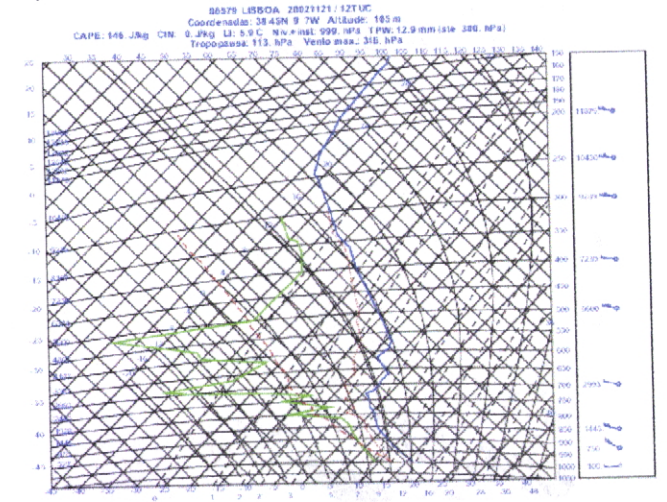
FIB ms6 22/11/102 0.00, Sic MSL 21/11/102 12h fc t+12 vt:22/11/2002 0h



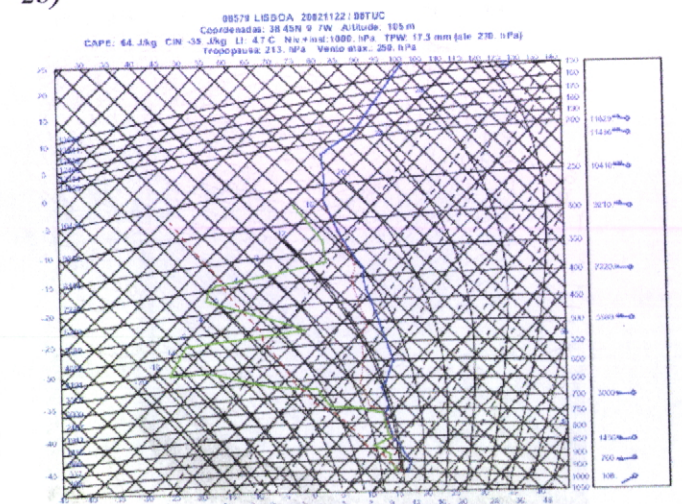
3a)



1b)

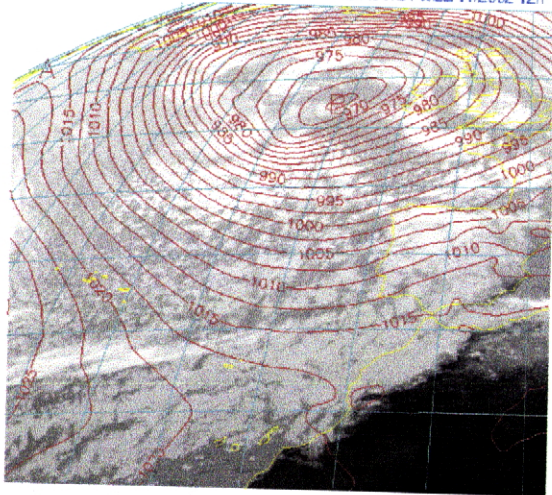


2b)



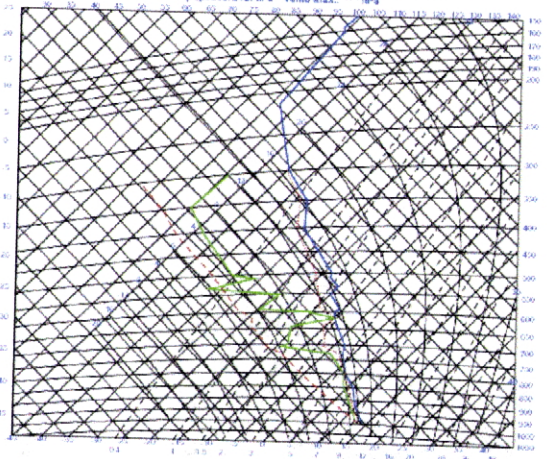
3b)

FIB ms6 22/11/102 12:00. Sic MSL 21/11/102 12h fc t+24 vt 22/11/2002 12h



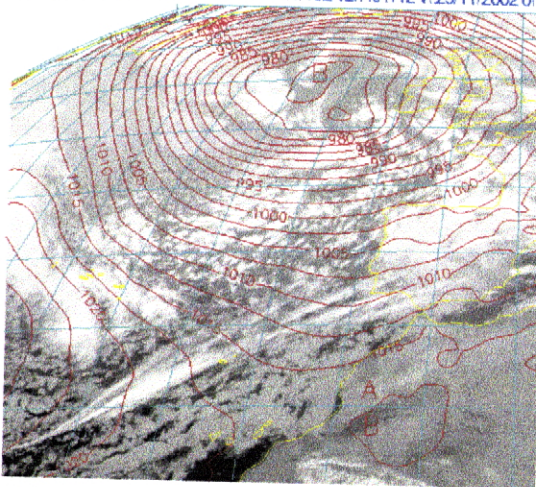
4a)

06570 LISBOA 20021122/ 12TUC
 Coordenada: 38 45N 9 17W Altitude: 105 m
 CAPE 210 J/kg CIN 0 J/kg LI: 1.3 C. Humid: 90% WPM: 22.8 mm (abr 300 mPa)
 Tropopausa: 212 mPa Vento max.: **** mPa



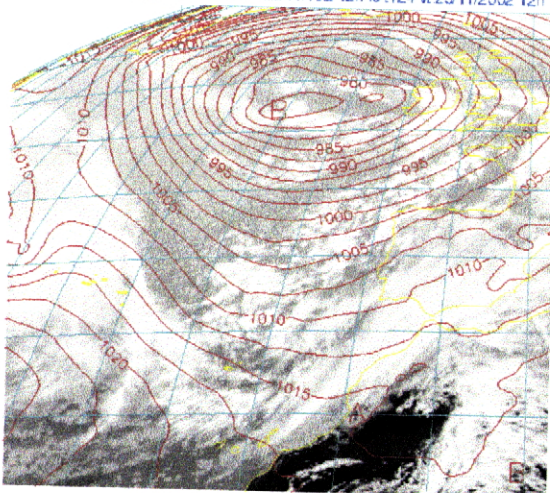
4b)

FIB ms6 23/11/102 0:00. Sic MSL 22/11/102 12h fc t+12 vt 23/11/2002 0h



5a)

FIB ms6 23/11/102 12:00. Sic MSL 22/11/102 12h fc t+24 vt 23/11/2002 12h



6a)

ANEXO II.A¹⁰

[Período 5/12/2002 - 7/12/2002]

Imagem satélite da banda IV composta com pressão atmosférica N.M.M.

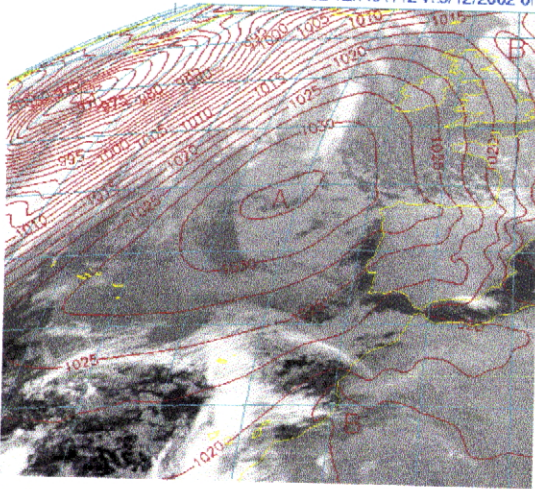
[Figuras 1a, 2a, 3a, 4a, 5a, 6a]

Tefrigrama correspondente à data da imagem composta

[Figuras 1b, 2b, 3b, 4b, 5b]

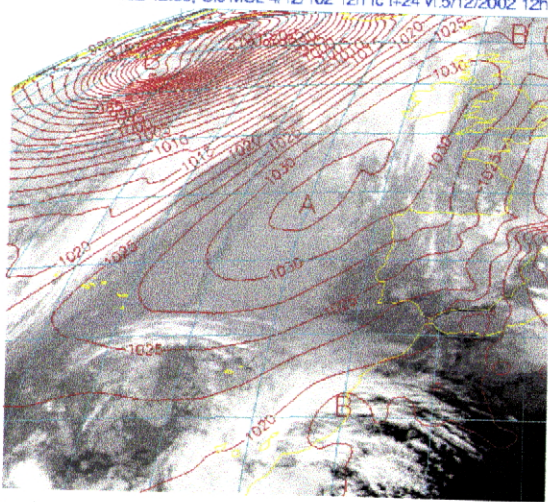


FIB ms6 5/12/102 0.00, Sic MSL 4/12/102 12h Ic (+12 vl.5/12/2002 0h



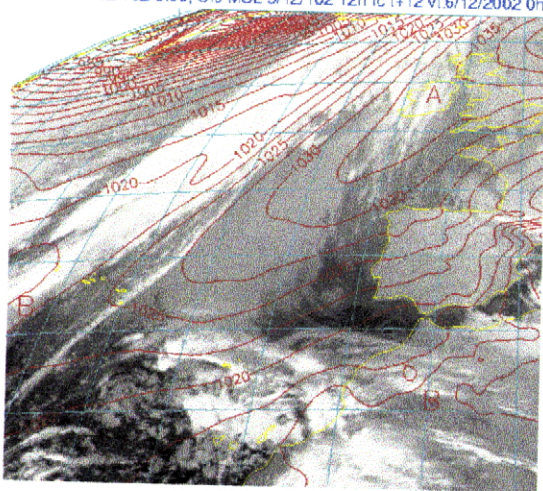
1a)

FIB ms6 5/12/102 12:00, Sic MSL 4/12/102 12h Ic 1-24 vl.5/12/2002 12h



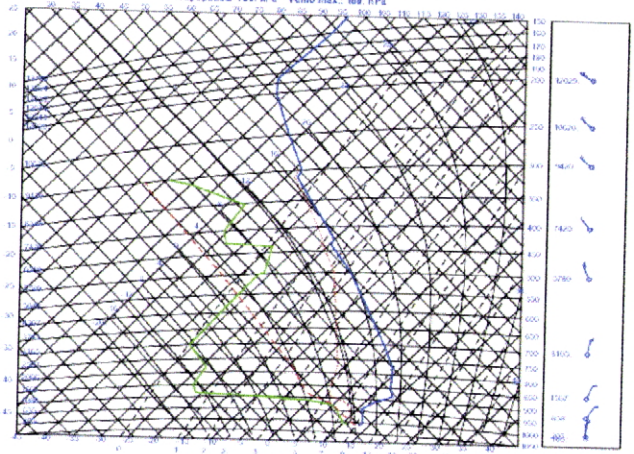
2a)

FIB ms6 6/12/102 0.00, Sic MSL 5/12/102 12h Ic (+12 vl.6/12/2002 0h



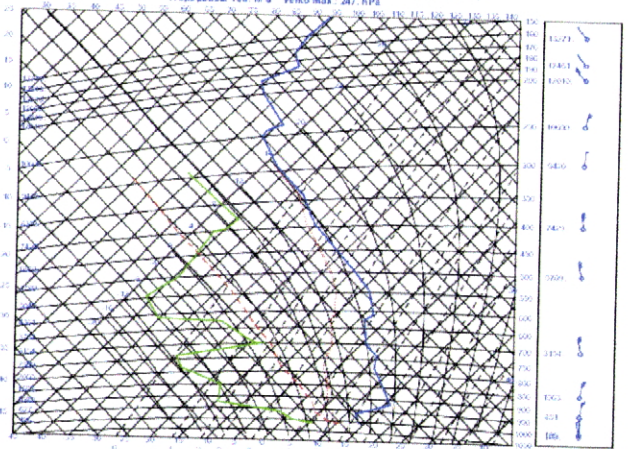
3a)

69579 LEBDOA 20021205/00TUC
Coordenadas: 38.45N 9.7W Altitude: 105 m
CAPE: J/kg CIN: J/kg LI: 7.3 C Niv: noL: hPa TPW: 10.1 mm (ata 300 hPa)
Tropopausa: 185 hPa Vento max.: 508 hPa



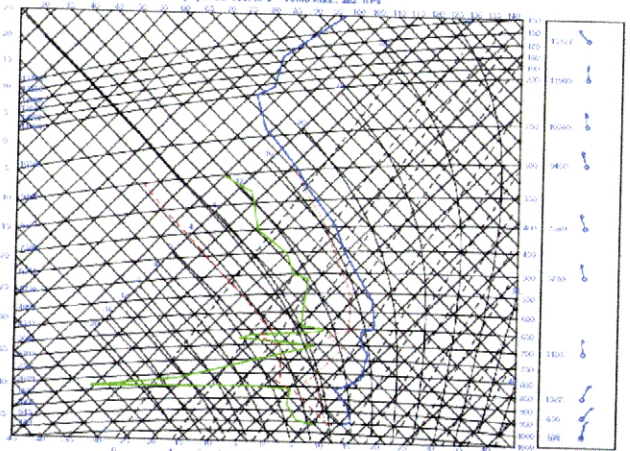
1b)

69579 LEBDOA 20021205/12TUC
Coordenadas: 38.45N 9.7W Altitude: 105 m
CAPE: J/kg CIN: J/kg LI: 12.5 C Niv: noL: hPa TPW: 6.2 mm (ata 291 hPa)
Tropopausa: 185 hPa Vento max.: 387 hPa



2b)

69579 LEBDOA 20021205/00TUC
Coordenadas: 38.45N 9.7W Altitude: 105 m
CAPE: J/kg CIN: J/kg LI: 16.1 C Niv: noL: hPa TPW: 12.3 mm (ata 380 hPa)
Tropopausa: 185 hPa Vento max.: 462 hPa

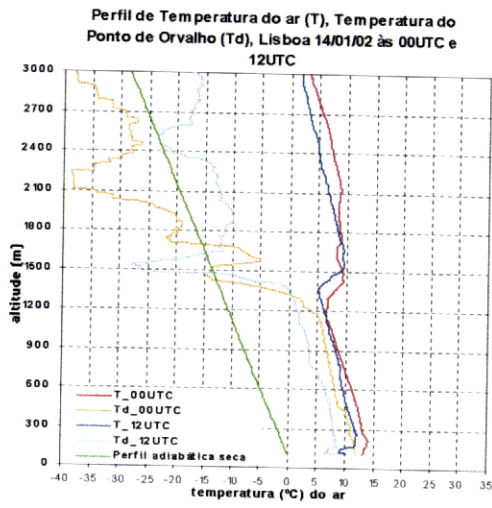


3b)

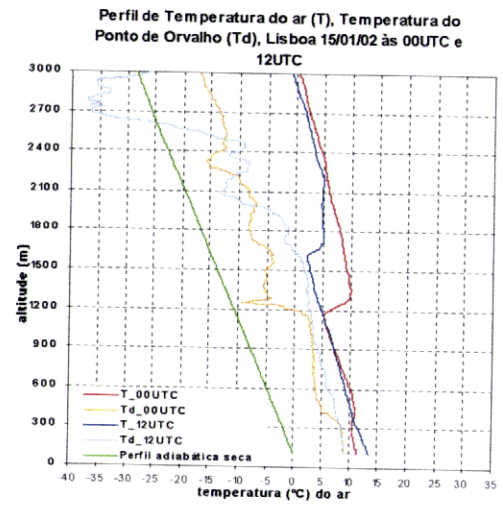
ANEXO II.B

Perfis verticais da temperatura do ar e temperatura do ponto de orvalho na baixa Troposfera

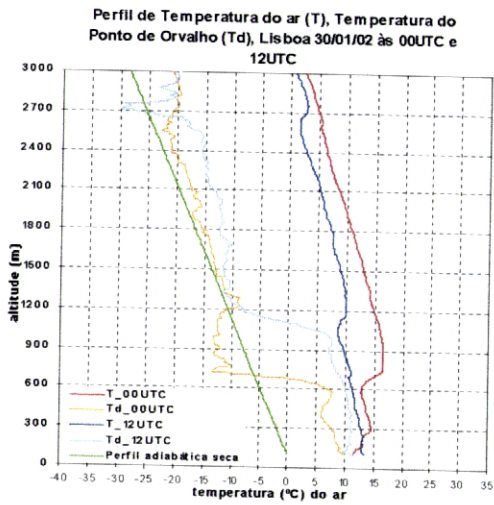
- 14 a 15 Janeiro de 2002, figuras 1 e 2.**
- 30 Janeiro a 1 Fevereiro de 2002, figuras 3, 4 e 5.**
- 4 a 6 Março de 2002, figuras 6, 7 e 8.**
- 19 a 25 de Março de 2002, figuras 9, 10, 11, 12, 13, 14 e 15.**
- 21 a 25 de Abril de 2002, figuras 15, 16, 17, 18, 19 e 20.**
- 10 a 12 de Maio de 2002, figuras 21, 22 e 23.**
- 15 a 19 de Julho de 2002, figuras 24, 25, 26, 27 e 28.**
- 8 a 11 de Novembro de 2002, figuras 29, 30, 31 e 32.**
- 21 a 23 de Novembro de 2002, figuras 33, 34 e 35.**
- 5 a 7 de Dezembro de 2002, figuras 36, 37 e 38.**



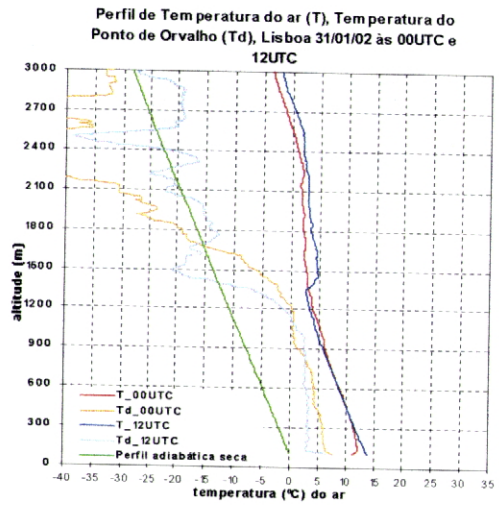
1)



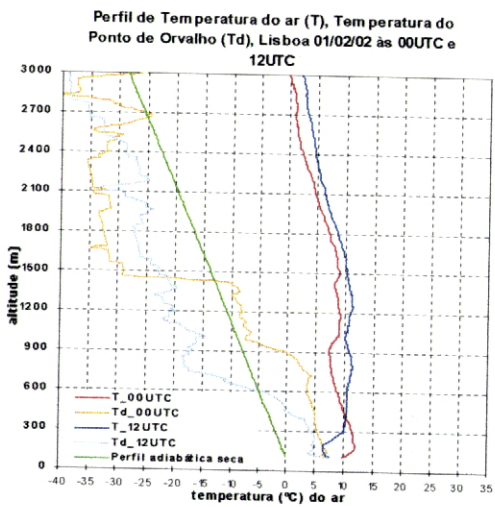
2)



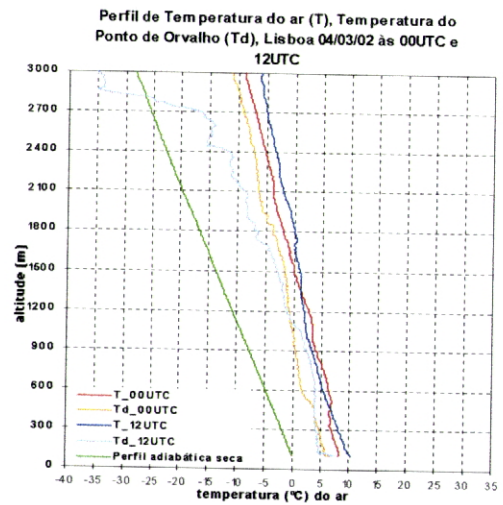
3)



4)

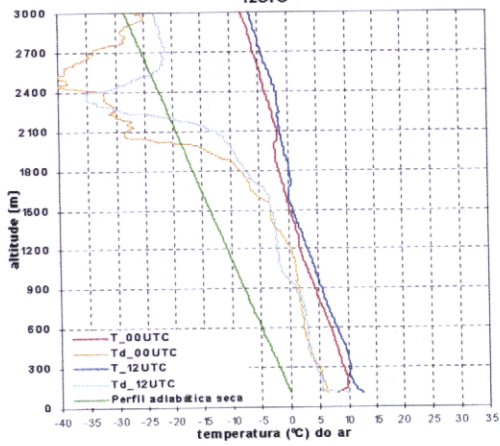


5)



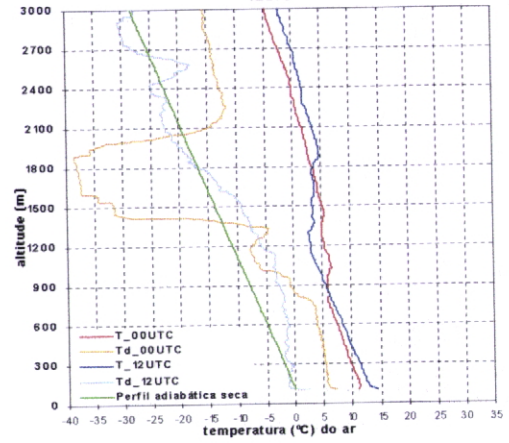
6)

Perfil de Temperatura do ar (T), Temperatura do Ponto de Orvalho (Td), Lisboa 05/03/02 às 00UTC e 12UTC



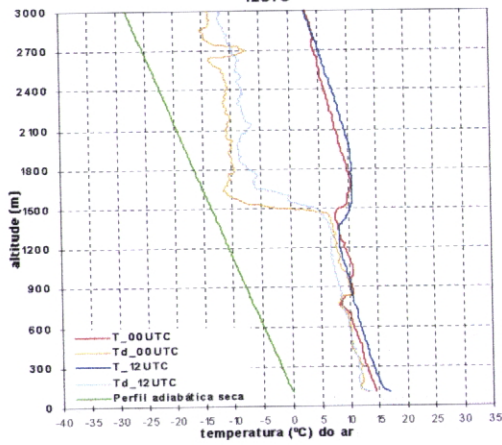
7)

Perfil de Temperatura do ar (T), Temperatura do Ponto de Orvalho (Td), Lisboa 06/03/02 às 00UTC e 12UTC



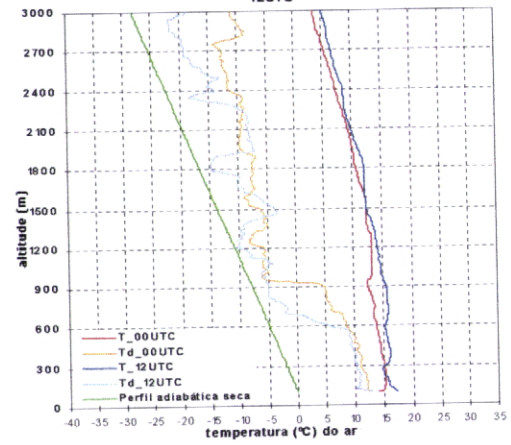
8)

Perfil de Temperatura do ar (T), Temperatura do Ponto de Orvalho (Td), Lisboa 19/03/02 às 00UTC e 12UTC



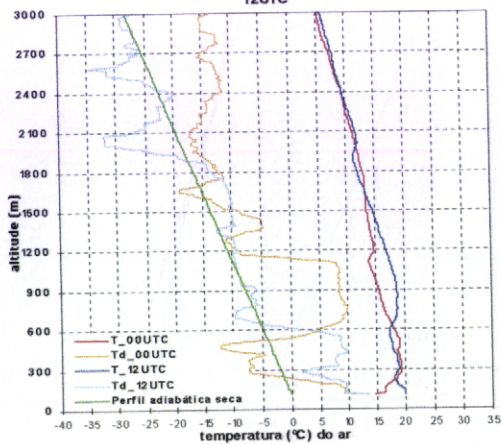
9)

Perfil de Temperatura do ar (T), Temperatura do Ponto de Orvalho (Td), Lisboa 20/03/02 às 00UTC e 12UTC



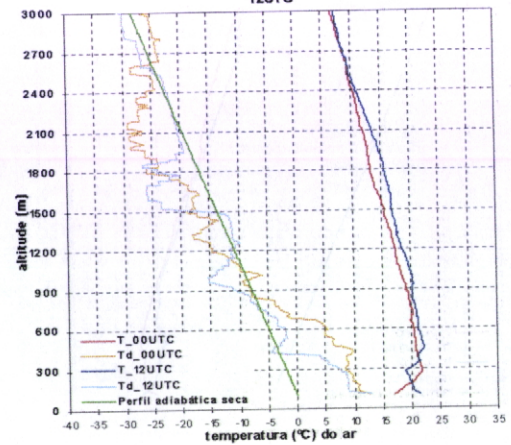
10)

Perfil de Temperatura do ar (T), Temperatura do Ponto de Orvalho (Td), Lisboa 21/03/02 às 00UTC e 12UTC

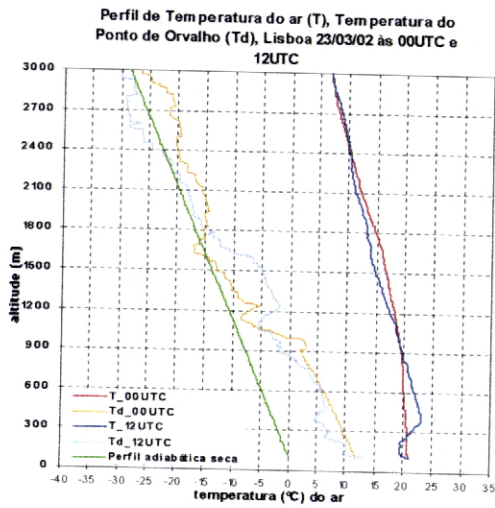


11)

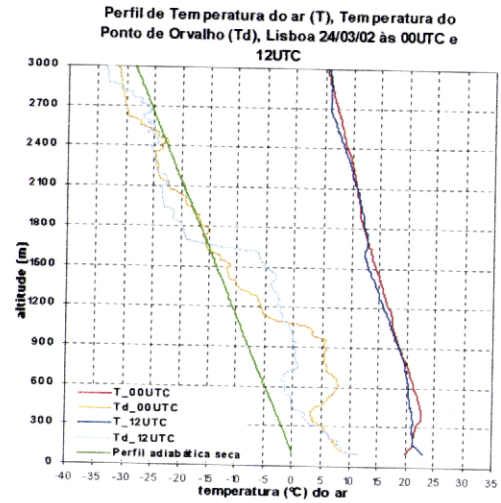
Perfil de Temperatura do ar (T), Temperatura do Ponto de Orvalho (Td), Lisboa 22/03/02 às 00UTC e 12UTC



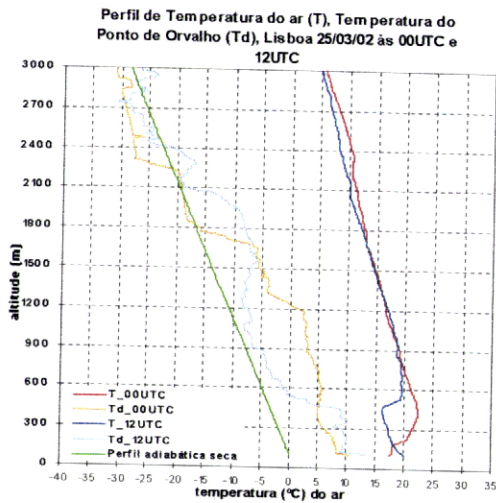
12)



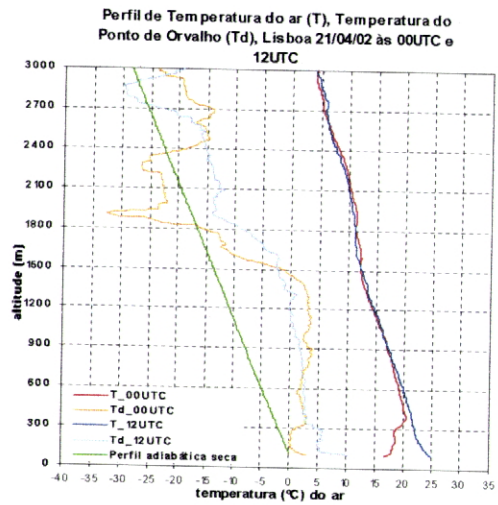
13)



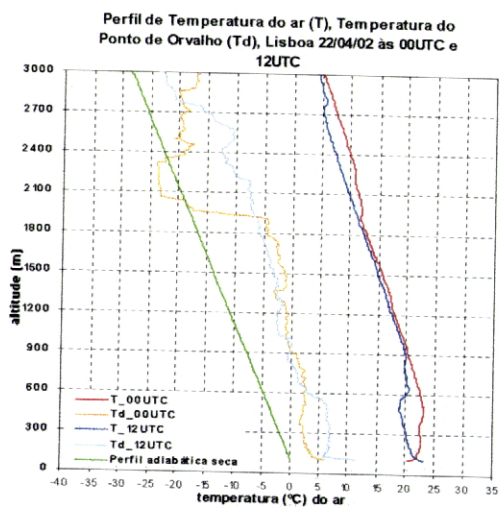
14)



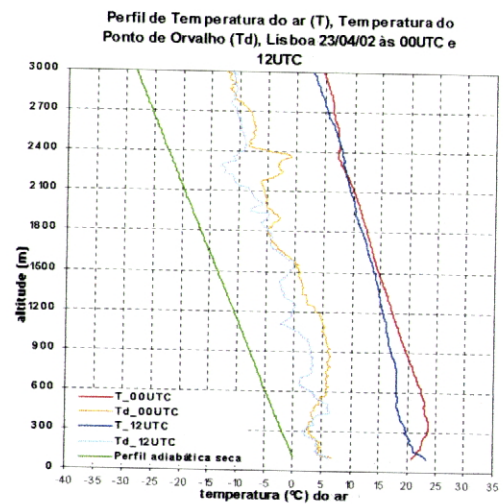
15)



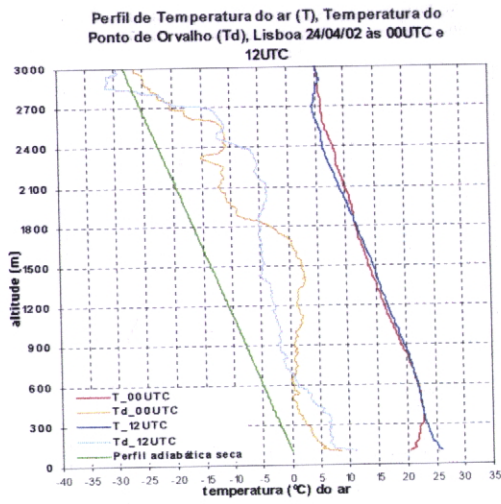
16)



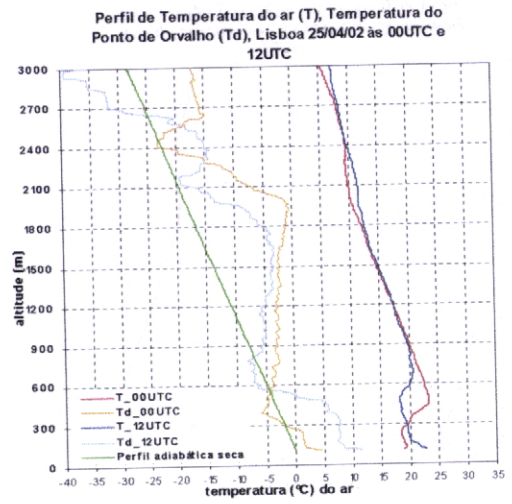
17)



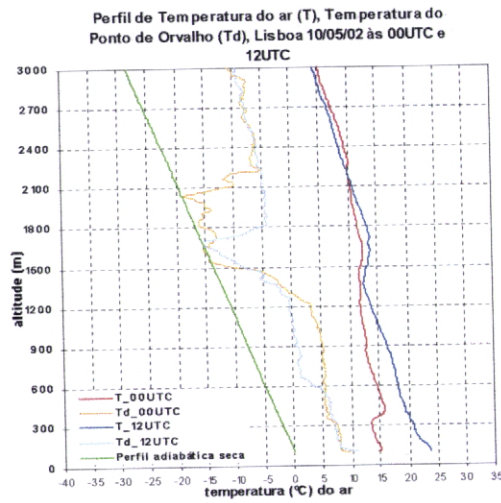
18)



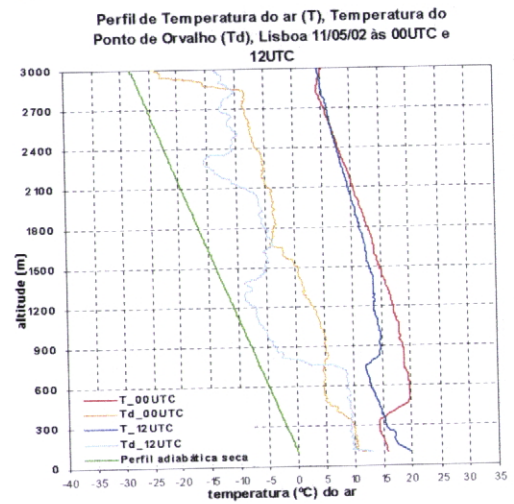
19)



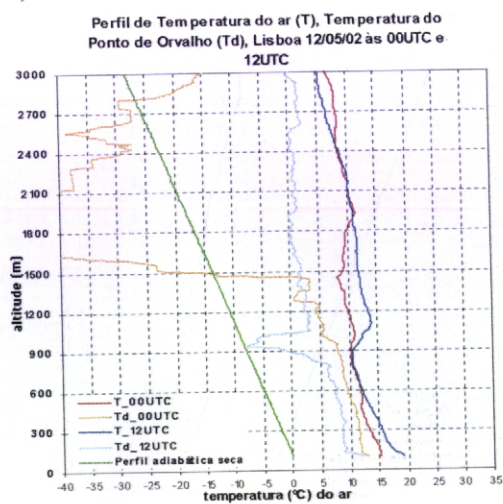
20)



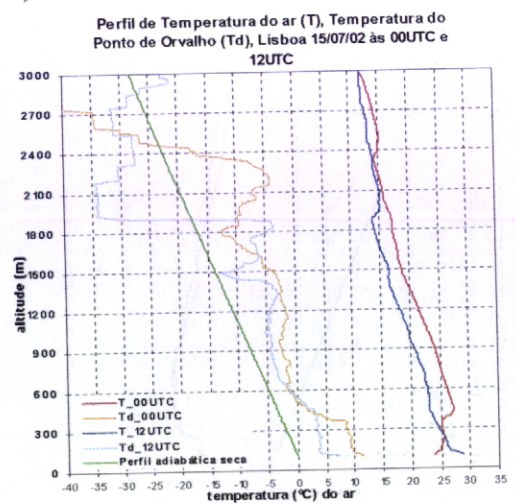
21)



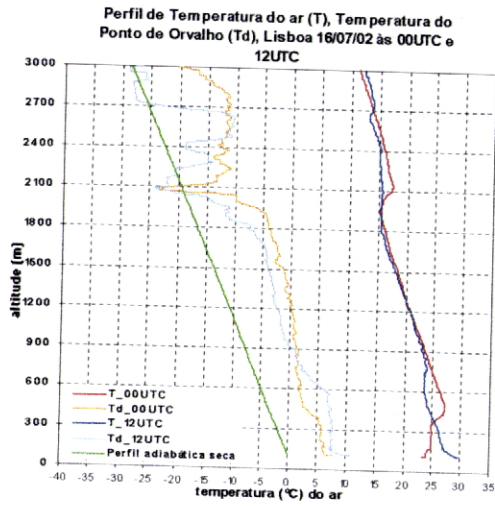
22)



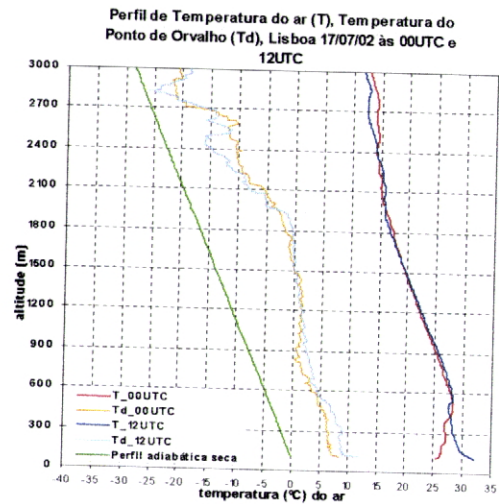
23)



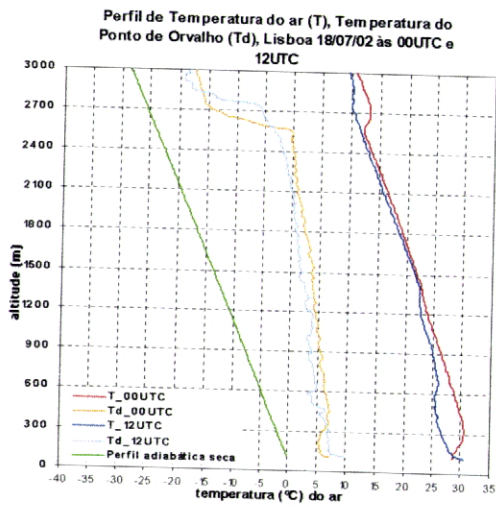
24)



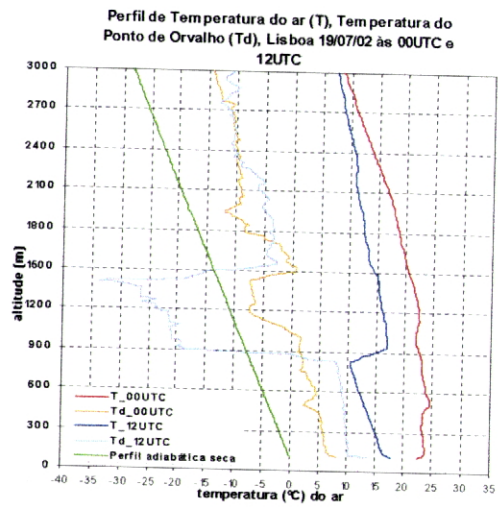
25)



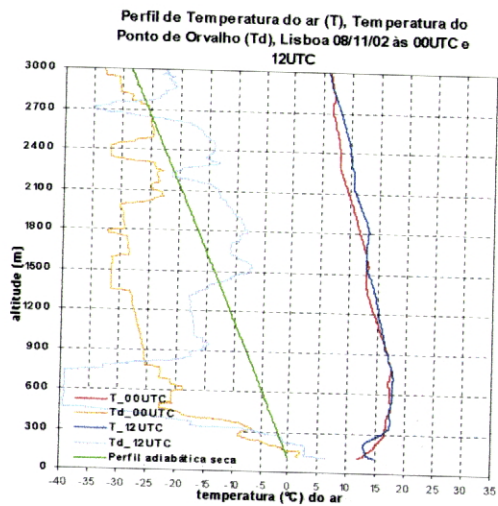
26)



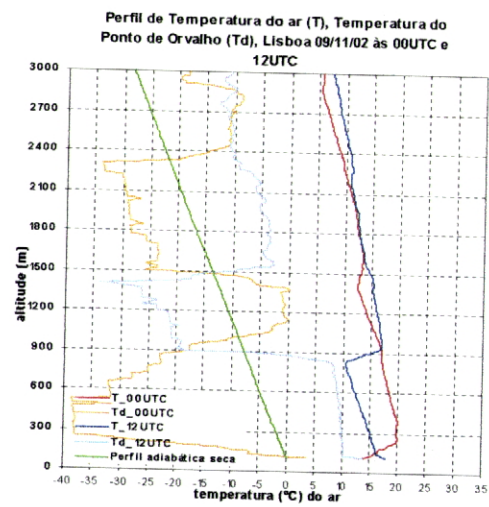
27)



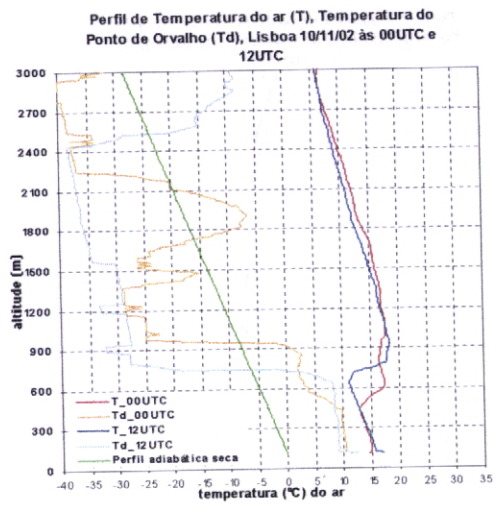
28)



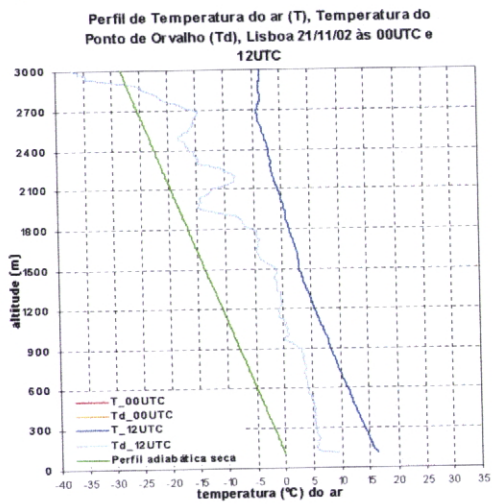
29)



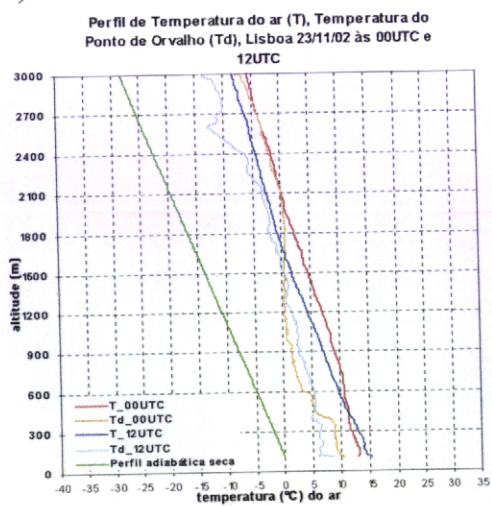
30)



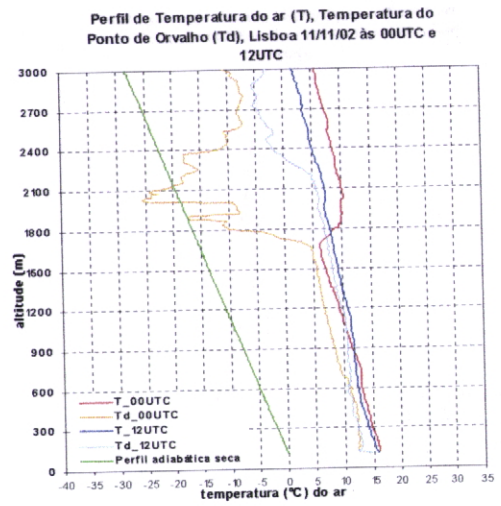
31)



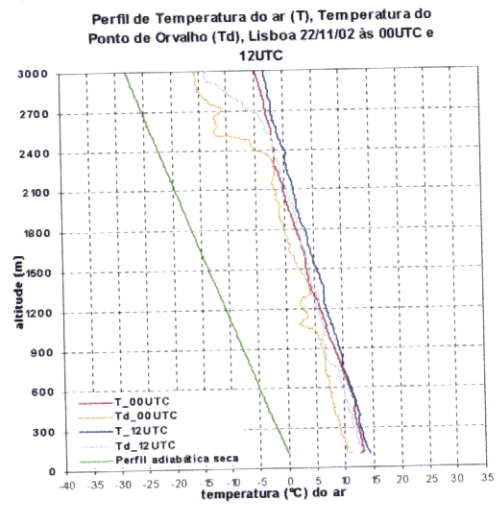
33)



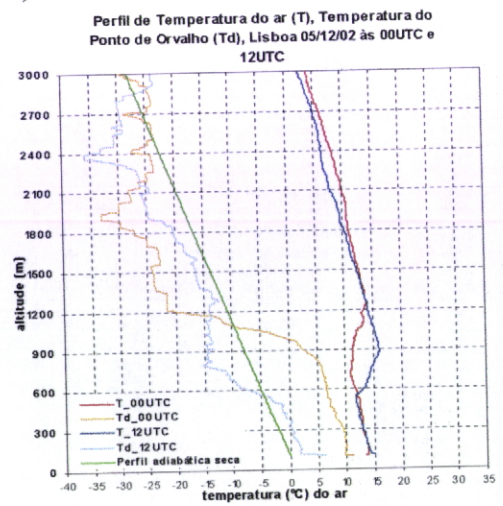
35)



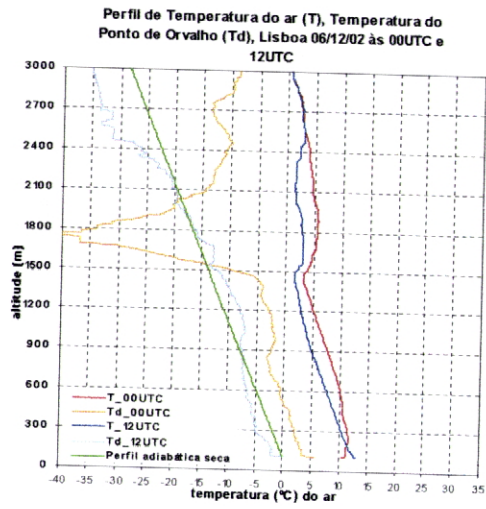
32)



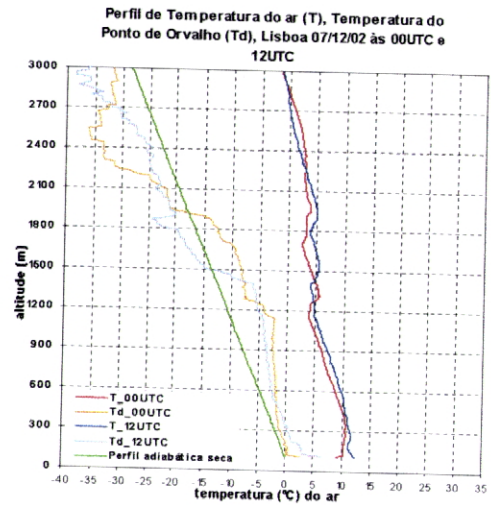
34)



36)



37)



38)

