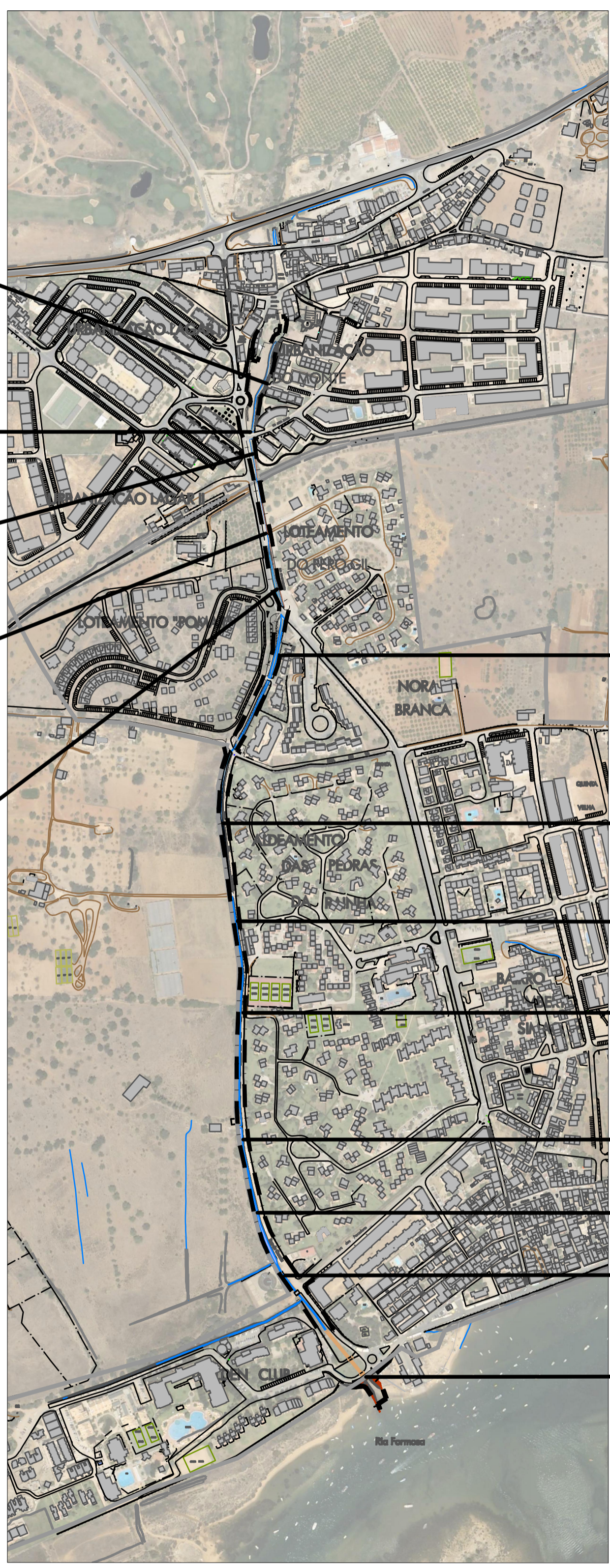
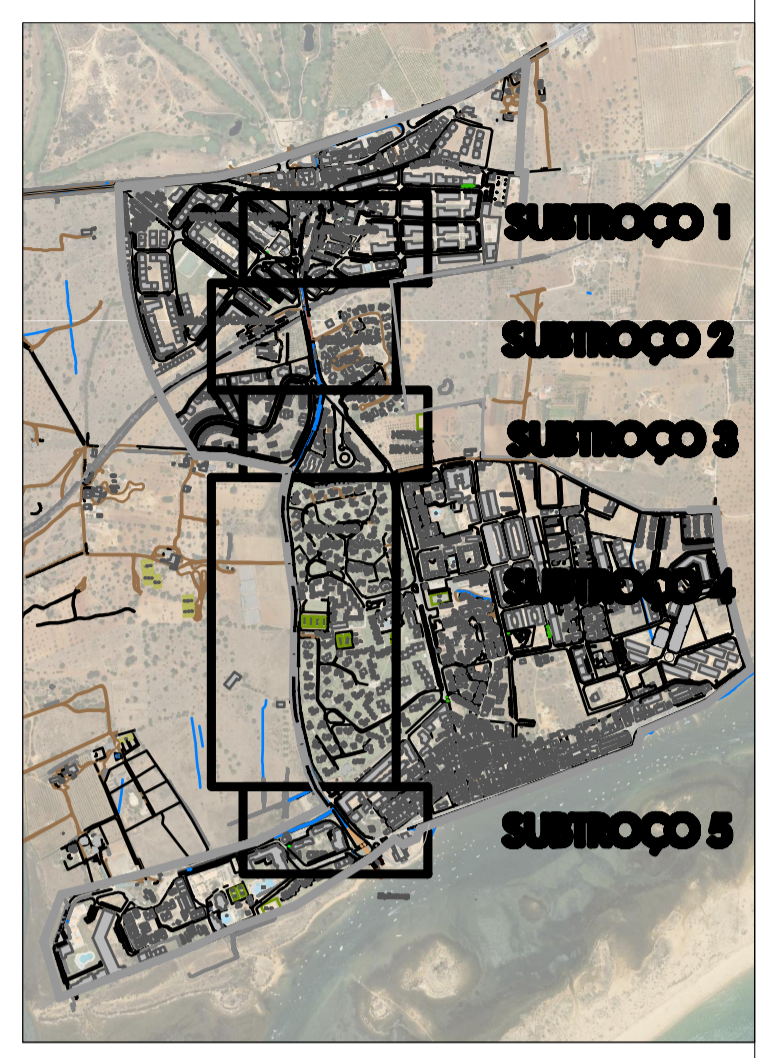


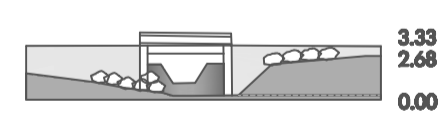
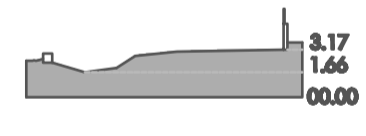
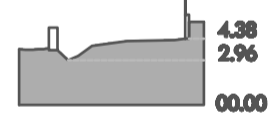
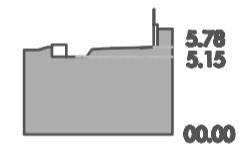
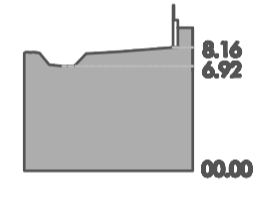
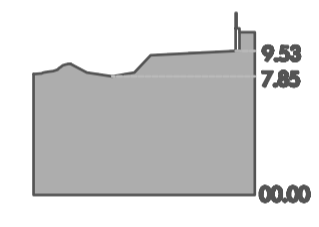
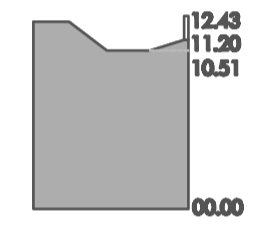
esc. 1/500



esc. 1/5000

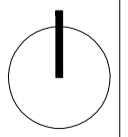


esc. 1/15 000



esc. 1/500

- Caminho de ferro
- Perímetro Urbano
- Limite da área de intervenção



Planta de Perfis  
 Análise e Caracterização - Ribeira da Canada (troço urbano)  
 872-Div/10 Requalificação da Ribeira da Canada - troço compreendido entre Conceição\Cabanas  
 Especialidade: Arquitectura Paisagista | Técnico: Vânia Rodrigues | Data: 03.2010 | Escala: 1/15 000 | 1/5000

**5.0**